

22
SECTION

19
TOWN

07
RANGE

ADAMS COUNTY

COUNTY CORNER NO: 89

ROMPORTOL ID: 41907220000

PUBLIC LAND SURVEY MONUMENT RECORD

TYPE OF MONUMENT: 2-3/8" O.D. IRON PIPE
ADAMS COUNTY COORDINATES, NAD 83 (2007)

N. 266605.674

E. 577989.139

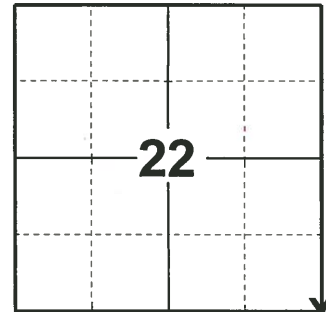
ELEVATION- _____ DATUM _____

FIELD WORK DATE: 04/17/2019

BASIS FOR MONUMENT LOCATION

1983 - PLS 1551 SEARCH AREA FOR SIGNS OF CORNER, NOTHING FOUND. NO OLD OCCUPATION SIGNS IN AREA. CORNER WAS RESET BY DOUBLE PROPORTIONATE MEASUREMENT USING THE SW CORNER OF 22 AND THE SE CORNER OF 23 FOR E-W CONTROL AND THE NW CORNER OF 23 AND THE POSITION SURVEYOR PAUL CARROLL USED FOR THE NW CORNER OF 34 FOR N-S CONTROL. THIS LOCATION FITS ORIGINAL N-S MEASUREMENTS WITHIN 2.2' AND E-W MEASUREMENTS WITHIN 9.1'.

2019 - PLS 2675 FOUND 2-3/8" O.D. IRON PIPE 10" ABOVE THE SWAMP SURFACE AND 2 WITNESSES. THE MONUMENT AGREES WITH BOTH WITNESSES. ACCEPTED THE 2-3/8" O.D. IRON PIPE AS THE CORNER LOCATION. SET 4 NEW TIES AND MEASURED TO THE EXISTING WITNESSES.



LOCATION

(INDICATE CORNER BY "X")

SEAL:

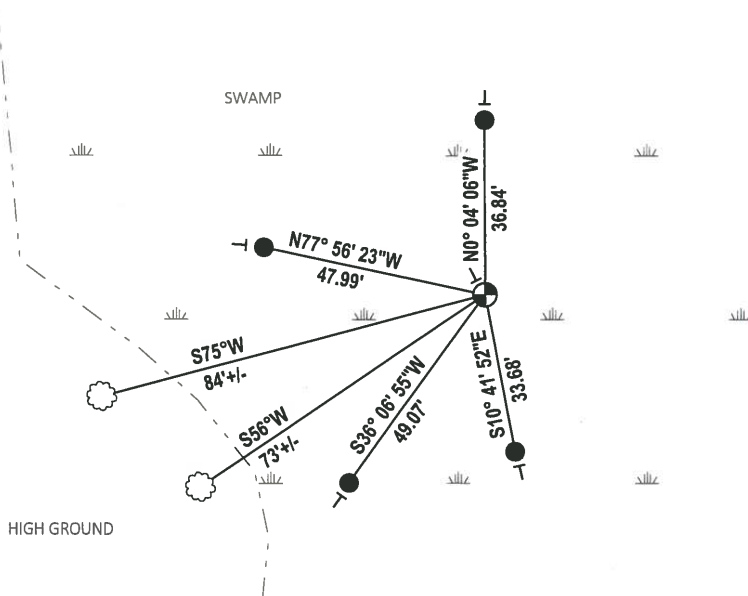
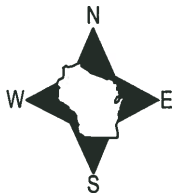


DATA SHOWN HERE ON THIS TIE SHEET IS CORRECT AND COMPLETE TO THE BEST OF MY KNOWLEDGE AND BELIEF.

PROFESSIONAL LAND SURVEYOR

DATE 5/1/19

- TIE SKETCH



- SET 3/4" x 48" IRON REBAR, 1.50#/FT
- ⊕ FOUND 2-3/8" O.D. IRON PIPE MONUMENT
- VINYL "T" POST
- ☼ WITNESS TREE

