

24
SECTION

19
TOWN

07
RANGE

ADAMS COUNTY

COUNTY CORNER NO: 92
ROMPORTOL ID: 41907240020

PUBLIC LAND SURVEY MONUMENT RECORD

TYPE OF MONUMENT: HARRISON
ADAMS COUNTY COORDINATES, NAD 83 (2007)

N. 266652.544

E. 585972.200

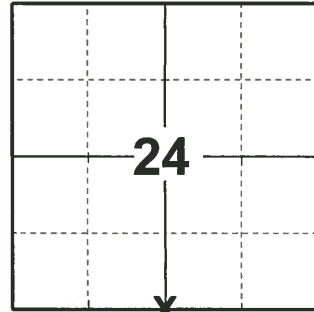
ELEVATION- - - DATUM - -

FIELD WORK DATE: 04/17/2019

BASIS FOR MONUMENT LOCATION

1975 - PLS 1103 1975 - PLS 1103 RAN EDM/TRANSIT TRAVERSE AROUND SECTIONS 1, 2, 3, 10, 11, 12, 13, 14, 15, AND 24 TO DETERMINE SEARCH AREAS FOR CORNERS. EXCAVATION WITH BACKHOE BY A.B. KIEDROWSKI, COUNTY SURVEYOR, WAS NOT ATTEMPTED BECAUSE SEARCH AREA FELL WITH WOODED AREA. COULD FIND NO EVIDENCE OF THE ORIGINAL CORNER OR ANY REMONUMENTATION. SET CORNER EQUIDISTANT AND ON LINE BETWEEN ADJACENT SECTION CORNERS.

2019 - PLS 2675 FOUND HARRISON FLUSH WITH THE GROUND AND 3 WITNESS TREES. THE MONUMENT AGREES WITH ALL 3 WITNESS TREES. ACCEPTED THE HARRISON AS THE CORNER LOCATION. SET 4 NEW TIES AND MEASURED TO EXISTING WITNESS TREES.



LOCATION

(INDICATE CORNER BY "X")

SEAL:

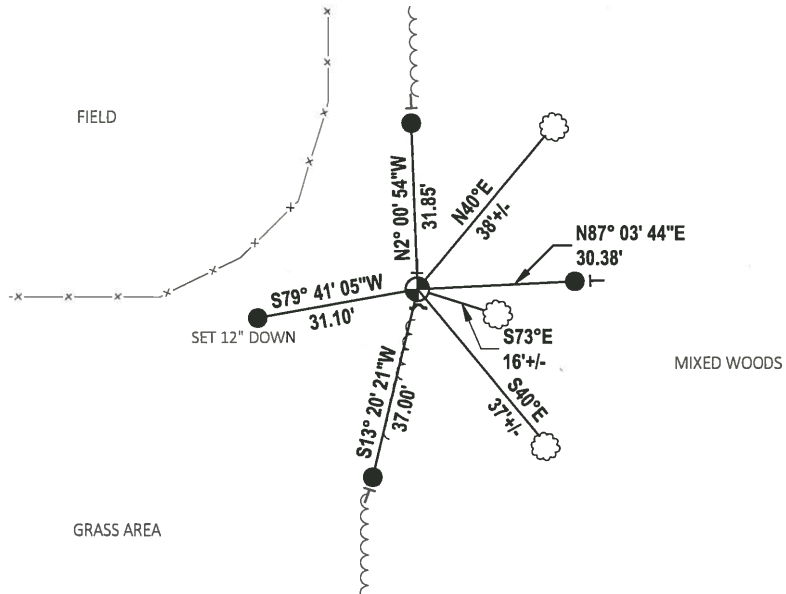


DATA SHOWN HERE ON THIS TIE SHEET IS CORRECT AND COMPLETE TO THE BEST OF MY KNOWLEDGE AND BELIEF.

PROFESSIONAL LAND SURVEYOR

DATE 5/1/19

- TIE SKETCH



- SET 3/4" x 18" IRON REBAR, 1.50#/FT
- ⊕ FOUND HARRISON MONUMENT
- ~ STEEL FENCE POST
- ⊥ VINYL "T" POST
- ⊗ WITNESS TREE

ADAMS COUNTY

Survey Monument Record

TYPE OF MONUMENT: Harrison Monument

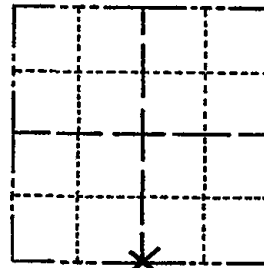
STATE PLANE COORDINATES: N _____
E _____

ELEVATION — M.S.L. DATUM: _____

THETA ANGLE: _____

FIELD BOOK: _____ PAGE _____

CORNER NO. 818 ⁽⁹²⁾
SECTION 24
TOWN 19
RANGE 7



LOCATION
(Indicated by 'X')

SEAL:

BASIS FOR MONUMENT LOCATION

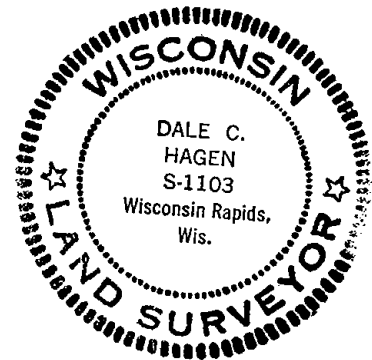
(Use reverse side if necessary)

Show info such as: History of corner, with reference to Vol. and pg, dates, surveyor; exact description of monument replaced; if location computed, by taped or EDM traverse; landowner remarks, etc.

Ran EDM/transit traverse around Section 1, 2, 3, 10, 11, 12, 13, 14, 15 and 24 to determine search areas for corners.

Excavation with back-hoe by A. B. Kiedrowski, County Surveyor, was not attempted because search area fell with wooded area. Could find no evidence of the original corner or any remonumentation.

Set corner equidistant and on line between adjacent Section corners.



CERTIFIED CORRECT:

Dale C. Hagen
Registered Land Surveyor

DATE: Nov. 5, 1975

COR. O.K. 12-1-77 LH-SS
" " 8-23-82 PK-SS
1 NEW TIE 3-18-87 SS
COR OK 6-24-92 JG

TIE SKETCH 1-GONE, 1-NEW TIE 1-30-02
OK, 9-21-07-JG
(Show at least four ties)

