

30
SECTION

19
TOWN

07
RANGE

ADAMS COUNTY

COUNTY CORNER NO: 95
ROMPORTOL ID: 41907302000

PUBLIC LAND SURVEY MONUMENT RECORD

TYPE OF MONUMENT: HARRISON (BROKEN-TOP)
ADAMS COUNTY COORDINATES, NAD 83 (2007)

N. 263926.356

E. 562168.214

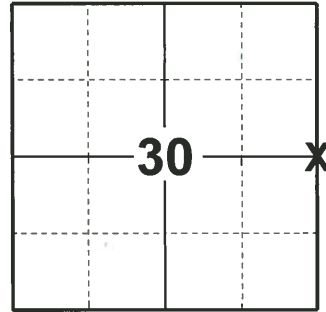
ELEVATION- DATUM

FIELD WORK DATE: 03/21/2019

BASIS FOR MONUMENT LOCATION

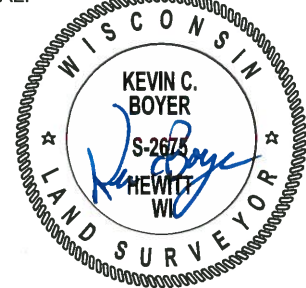
1977 - PLS 1103 RAN EDM/T2 TRAVERSE AROUND SECTION 30 & 31 TO DETERMINE SEARCH AREA FOR INVESTIGATION. COULD FIND NO EVIDENCE OF THE ORIGINAL CORNER OR ANY BEARING TREES. NO RECORDS ARE AVAILABLE FOR THIS CORNER WITH REGARD TO RESURVEYS, AND COULD FIND NO REMONUMENTATION. RELOCATED CORNER BY SINGLE PROPORTIONATE MEASURE ON LINE BETWEEN ADJACENT SECTION CORNERS. SET MONUMENT ON 9-8-1977.

2019 - PLS 2675 FOUND HARRISON (BROKEN-TOP) 8" BELOW THE WATER SURFACE AND 2 WITNESSES. THE MONUMENT AGREES WITH BOTH THE WITNESSES. ACCEPTED THE HARRISON (BROKEN-TOP) AS THE CORNER LOCATION. SET 4 NEW TIES AND MEASURED TO THE EXISTING WITNESSES.



LOCATION
(INDICATE CORNER BY "X")

SEAL:

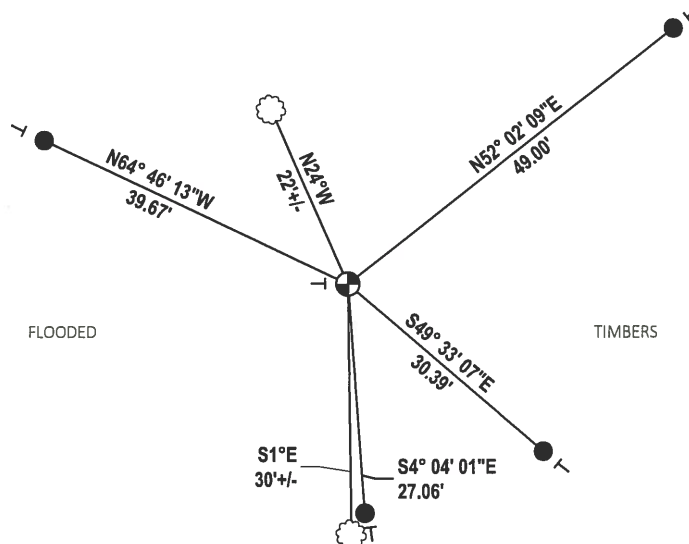
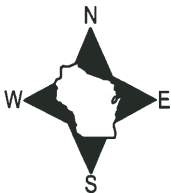


DATA SHOWN HERE ON THIS TIE SHEET IS CORRECT AND COMPLETE TO THE BEST OF MY KNOWLEDGE AND BELIEF.

PROFESSIONAL LAND SURVEYOR

DATE 5/1/19

- TIE SKETCH



- SET 3/4" x 18" IRON REBAR, 1.50#/FT
- ⊕ FOUND HARRISON (BROKEN-TOP) MONUMENT
- ┆ VINYL "T" POST
- ☁ WITNESS TREE

Government Land Corner Certificate

ADAMS County
 TYPE OF MONUMENT: HARRISON STD.
 STATE PLANE COORDINATES: N _____
 E _____
 ELEVATION — M.S.L. DATUM: _____
 THETA ANGLE: _____
 FIELD BOOK: 54 PAGE 34
 DRAWN BY: SCOTT SORENSEN

CORNER NO. 95
 SECTION 29
 TOWN 19
 RANGE 7



LOCATION
(Indicated by 'X')

BASIS FOR MONUMENT LOCATION

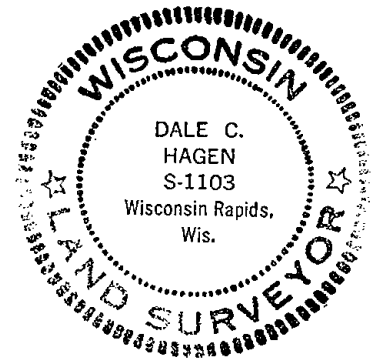
Show info such as: History of corner, with reference to Vol. and pg., dates, surveyor; exact description of monument replaced; if location computed, by taped or EDM traverse; landowner remarks, etc. (Use reverse side if necessary)

Ran EDM/T2 traverse around Sections 30 & 31 SEAL:
 to determine search area for investigation.

Could find no evidence of the original corner or any bearing trees. No records are available for this corner with regard to resurveys, and could find no remonumentation.

Relocated corner by single proportionate measure on line between adjacent section corners.

Set monument on 9-8-1977.



DATA SHOWN HERE ON
 CERTIFIED CORRECT:

Dale C. Hagen
 Registered Land Surveyor

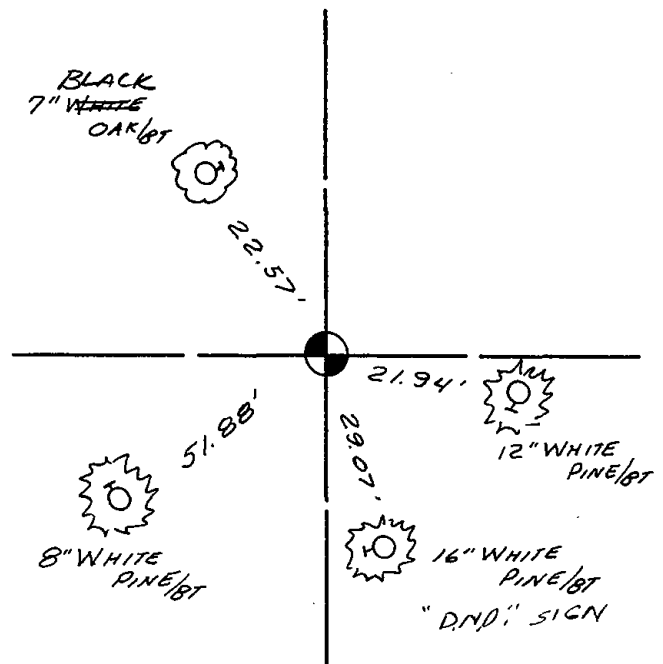
DATE: December 27, 1977

TIE SKETCH

Show at least four ties, also fence lines, roads, topo, size and type of witness trees' and if off road - best way to arrive at corner.

NOTE

Ties in trees to nail in disc.



MAINTENANCE RECORD

| Date | Init. | Remarks |
|----------|-------|---------|
| 7-1-92 | SG-BS | ALL OK |
| 3-C-97 | SS | " " |
| 10-22-07 | GR | OK |
| | | |
| | | |