

29
SECTION

19
TOWN

07
RANGE

ADAMS COUNTY

COUNTY CORNER NO: 96

ROMPORTOL ID: 41907292000

PUBLIC LAND SURVEY MONUMENT RECORD

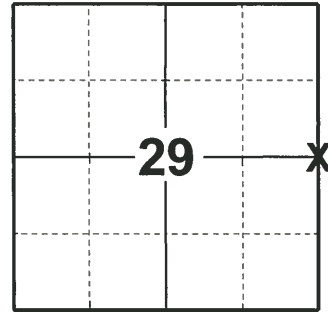
TYPE OF MONUMENT: HARRISON
ADAMS COUNTY COORDINATES, NAD 83 (2007)

N. 263942.025

E. 567453.160

ELEVATION- _____ DATUM _____

FIELD WORK DATE: 04/15/2019



LOCATION

(INDICATE CORNER BY "X")

BASIS FOR MONUMENT LOCATION

1983 - PLS 1551 SIGNS OF ORIGINAL GOVERNMENT BEARING TREES AND CORNER ARE NOW GONE. CORNER WAS RESET PROPORTIONALLY ON A STRAIGHT LINE BETWEEN ADJACENT SECTION CORNERS. CORNER LOCATION FALLS WITHIN 3.5 FEET OF THE CENTERLINE OF AN OLD N-S ROAD BED.

2019 - PLS 2675 FOUND HARRISON FLUSH WITH THE OLD ROAD BED SURFACE, 1 TIE, AND 3 WITNESSES. THE MONUMENT AGREES WITH THE TIE AND THE 3 WITNESSES. ACCEPTED THE HARRISON AS THE CORNER LOCATION. SET 3 NEW TIES AND MEASURED TO THE TIE AND WITNESSES.

SEAL:

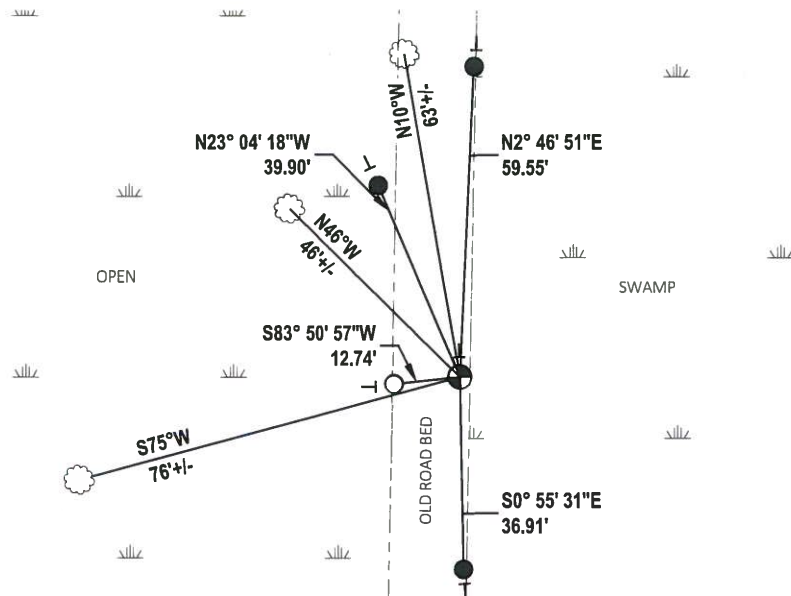
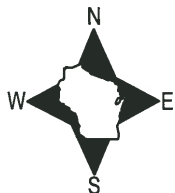


DATA SHOWN HERE ON THIS TIE SHEET IS CORRECT AND COMPLETE TO THE BEST OF MY KNOWLEDGE AND BELIEF.

PROFESSIONAL LAND SURVEYOR

DATE 5/1/19

- TIE SKETCH



- SET 3/4" x 18" IRON REBAR, 1.50#/FT
- FOUND 3/4" IRON ROD
- ⊕ FOUND HARRISON MONUMENT
- └ VINYL "T" POST
- ☼ WITNESS TREE

U.S. PUBLIC LAND SURVEY MONUMENT RECORD

ADAMS COUNTY

TYPE OF MONUMENT: Standard Harrison

STATE PLANE COORDINATES: N _____
E _____

ELEVATION — M.S.L. DATUM: _____

THETA ANGLE: _____

FIELD BOOK: Adams County PAGE 62

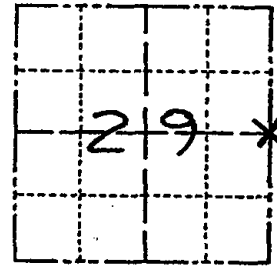
DRAWN BY: D. Riesop

CORNER NO. 96

SECTION 29

TOWN 19N

RANGE 7E



LOCATION
(Indicated by 'X')

BASIS FOR MONUMENT LOCATION

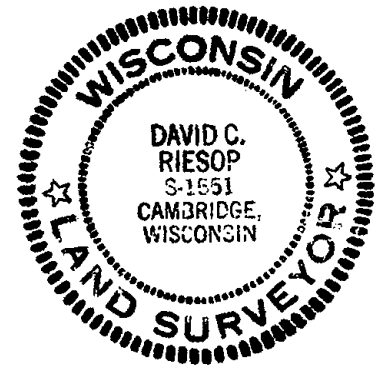
Show info such as: History of corner, with reference to Vol. and pg., dates, surveyor; exact description of monument replaced; if location computed, by taped or EDM traverse; landowner remarks, etc. (Use reverse side if necessary)
(in conformance with Section A-E 502 of the Wisconsin Administrative Code)

Signs of original government bearing trees and corner are now gone.

Corner was reset proportionally on a straight line between adjacent Section corners.

Corner location falls within 3.5 feet of the centerline of an old N-S road bed.

SEAL:



DATA SHOWN HERE ON
CERTIFIED CORRECT:

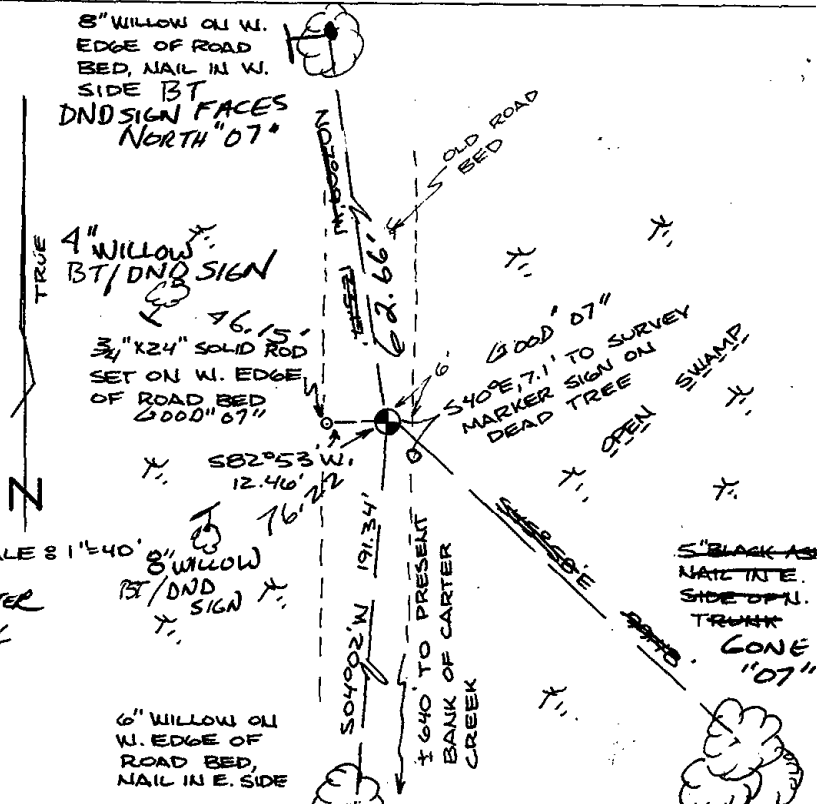
David C. Riesop
Registered Land Surveyor

DATE: 8/26/83

Filed for record this 28th
day of Sept 1983
per 59.60 Wisconsin Statutes.
D. Riesop
ADAMS COUNTY SURVEYOR

TIE SKETCH

Show at least four ties, also fence lines, roads, topo, size and type of witness trees and if off road - best way to arrive at corner.



MAINTENANCE RECORD

Date	Init.	Remarks
6-24-92	SG	COMPLETE AREA FLOODED BEAVER DAMS
2-25-02	JG	UNABLE TO LOCATE, HIGH WATER
11-7-07	JG	3-GONE, 3-NEW, MON. OK

SCALE 8" = 40'