

29 SECTION 19 TOWN 07 RANGE

ADAMS COUNTY

COUNTY CORNER NO: 105
ROMPORTOL ID: 41907290000

PUBLIC LAND SURVEY MONUMENT RECORD

TYPE OF MONUMENT: HARRISON
ADAMS COUNTY COORDINATES, NAD 83 (2007)

N. 261292.564

E. 567454.920

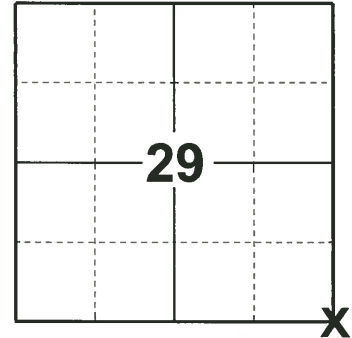
ELEVATION- - - - - DATUM - - - - -

FIELD WORK DATE: 05/15/2019

BASIS FOR MONUMENT LOCATION

1983 - PLS 1551 DUG IN CORNER AREA TO ORIGINAL GROUND SURFACE. NO TRACE OF ORIGINAL CORNER OR BEARING TREES WAS FOUND. RESET CORNER DOUBLE PROPORTIONALLY, USING THE ESTABLISHED MONUMENTS AT THE NW CORNER OF 29 AND THE SW CORNER OF 32, AND THE SW CORNER OF 29 AND THE NE CORNER OF 33. THIS POSITION DOUBLES THROUGH AN OLD E-W FENCE LINE AT THE E1/4 CORNER OF 32 AND FALLS WITHIN 2 FEET OF THE CENTERLINE OF AN OLD N-S ROAD BED.

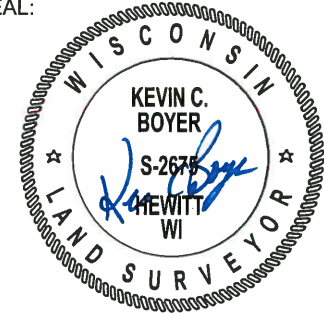
2019 - PLS 2675 FOUND HARRISON 4" BELOW THE OLD ROAD BED AND 2 WITNESSES. THE MONUMENT AGREES WITH BOTH WITNESSES. ACCEPTED THE HARRISON AS THE CORNER LOCATION. SET 4 NEW TIES AND MEASURED TO THE EXISTING WITNESSES.



LOCATION

(INDICATE CORNER BY "X")

SEAL:

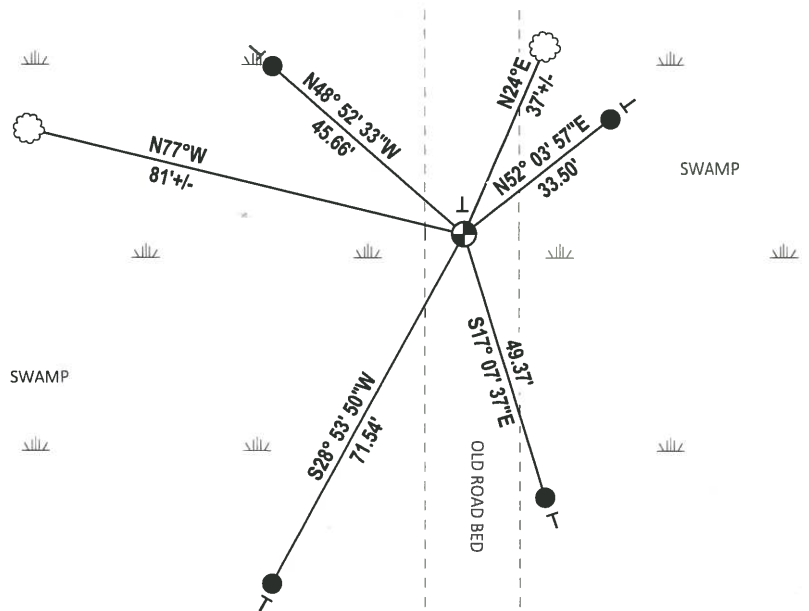
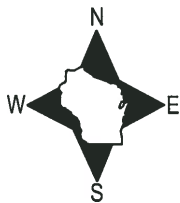


DATA SHOWN HERE ON THIS TIE SHEET IS CORRECT AND COMPLETE TO THE BEST OF MY KNOWLEDGE AND BELIEF.

PROFESSIONAL LAND SURVEYOR

DATE 6/4/19

TIE SKETCH



- SET 3/4" x 48" IRON REBAR, 1.50#/FT
- ⊕ FOUND HARRISON MONUMENT
- └ VINYL "T" POST
- ☁ WITNESS TREE

U.S. PUBLIC LAND SURVEY MONUMENT RECORD

ADAMS COUNTY

TYPE OF MONUMENT: Standard Harrison

STATE PLANE COORDINATES: N _____
E _____

ELEVATION — M.S.L. DATUM: _____

THETA ANGLE: _____

FIELD BOOK: Adams County PAGE 63

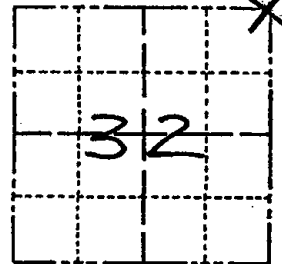
DRAWN BY: D. Riesop

CORNER NO. 105

SECTION 32

TOWN 19N

RANGE 7E



LOCATION
(Indicated by 'X')



BASIS FOR MONUMENT LOCATION

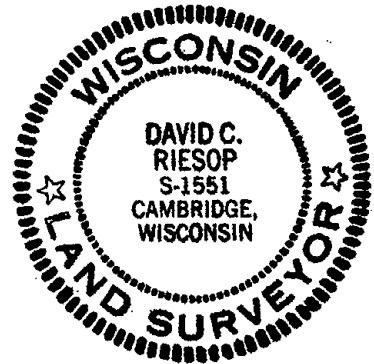
Show info such as: History of corner, with reference to Vol. and pg., dates, surveyor; exact description of monument replaced; if location computed, by taped or EDM traverse; landowner remarks, etc. (Use reverse side if necessary) (in conformance with Section A-E 502 of the Wisconsin Administrative Code)

Dug in corner area to original ground surface. No trace of original corner or bearing trees was found.

Reset corner double proportionally, using the established monuments at the NW cor. of 29 and the SW cor. of 32, and the SW cor. of 29 and the NE cor. of 33.

This position doubles through an old E-W fence line at the E 1/4 cor. of 32 and falls within 2 feet of the centerline of an old N-S road bed.

SEAL:



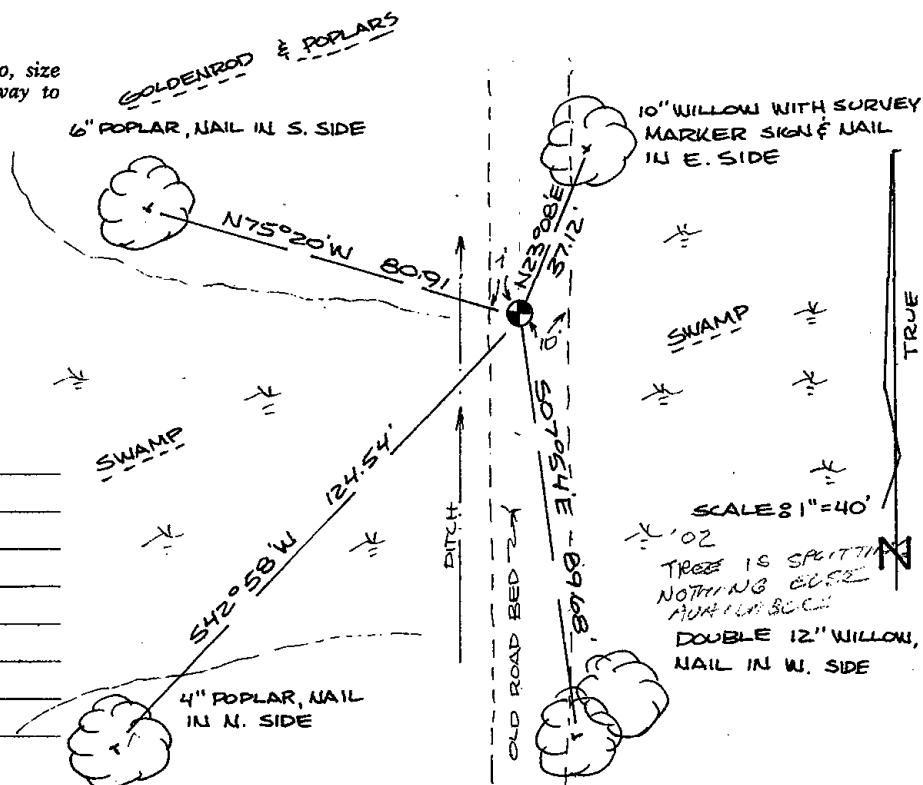
DATA SHOWN HERE ON
CERTIFIED CORRECT:

David C. Riesop
Registered Land Surveyor

DATE: 8/28/83

TIE SKETCH

Show at least four ties, also fence lines, roads, topo, size and type of witness trees and if off road - best way to arrive at corner.



filed for record this 28th
day of Sept 1983
per 59.60 Wisconsin Statutes.

D. Riesop
ADAMS COUNTY SURVEYOR

MAINTENANCE RECORD

Date	Init.	Remarks
6-24-92	JG	OK.
5-24-02	SS	OK
11-5-07	JE	OK

SCALE 8" = 40'
TREES IS SPITTING
NOTHING ELSE
MAY BE BEC
DOUBLE 12" WILLOW,
NAIL IN W. SIDE