

28 SECTION 19 TOWN 07 RANGE

ADAMS COUNTY

COUNTY CORNER NO: 107

ROMPORTOL ID: 41907280000

PUBLIC LAND SURVEY MONUMENT RECORD

TYPE OF MONUMENT: 2-3/8" O.D. IRON PIPE W/ALUM. CAP
ADAMS COUNTY COORDINATES, NAD 83 (2007)

N. 261337.656

E. 572735.449

ELEVATION- _____ DATUM _____

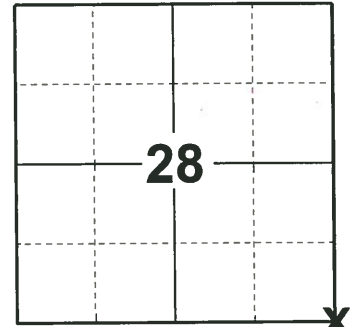
FIELD WORK DATE: 05/06/2019

BASIS FOR MONUMENT LOCATION

1983 - PLS 1444 THIS CORNER WAS SET BY RETRACING A SECTION SUMMARY PREPARED BY PAUL T. CARROLL. A 2"X30" IRON PIPE WAS DRIVEN OVER A 1-3/4"X72" IRON PIPE AND AN ALUMINUM.

1983 - PLS 1551 THE 2" IRON PIPE SHOWN ON TIE SHEET BY LANCE HABECK AND DATED 1/13/1983 WAS FOUND TO NOT BE IN AGREEMENT WITH THE SECTION SUMMARY AS FILED BY THE SAME SURVEYOR. A COMPUTED POSITION FOR THIS CORNER WAS ARRIVED AT BY USING THE SAME DISTANCE AS SHOWN BY PAUL CARROLL FROM THE NE CORNER, AND THE E 1/4 CORNER OF SECTION 34. THIS POSITION WAS TIED TO THE POINTS PREVIOUSLY USED AS TIES FOR THE 2" PIPE.

2019 - PLS 2675 FOUND 2-3/8" O.D. IRON PIPE W/ALUM. CAP AND 1 WITNESS. THE MONUMENT AGREES WITH THE EXISTING WITNESS. ACCEPTED THE 2-3/8" O.D. IRON PIPE W/ALUM. CAP AS THE CORNER LOCATION. SET 4 NEW TIES AND MEASURED TO THE EXISTING WITNESS.



LOCATION

(INDICATE CORNER BY "X")

SEAL:



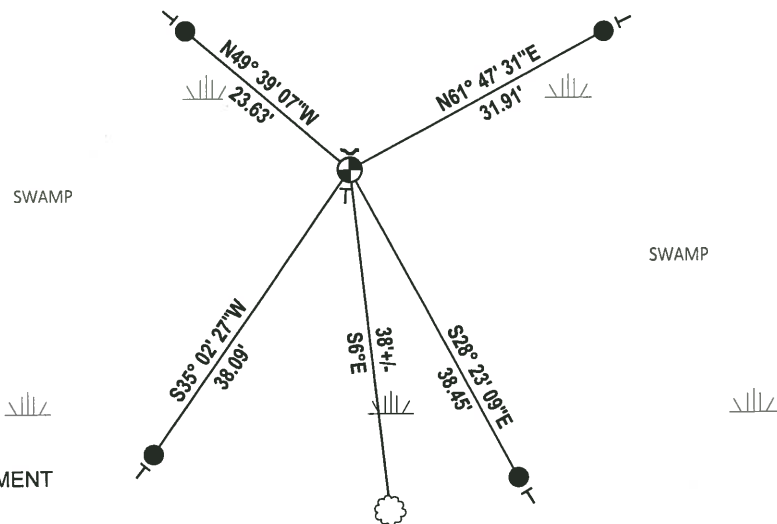
DATA SHOWN HERE ON THIS TIE SHEET IS CORRECT AND COMPLETE TO THE BEST OF MY KNOWLEDGE AND BELIEF.

PROFESSIONAL LAND SURVEYOR

DATE 6/4/19

TIE SKETCH

NOTE: THE POSITION BY PLS 1551 IS 1.54' SOUTH & 2.75' EAST OF THE 2-3/8" O.D. IRON PIPE



- SET 3/4" x 48" IRON REBAR, 1.50#/FT
- ⊕ FOUND 2-3/8" O.D. IRON PIPE W/ALUM. CAP MONUMENT
- ┌ STEEL FENCE POST
- └ VINYL "T" POST
- ⊗ WITNESS TREE

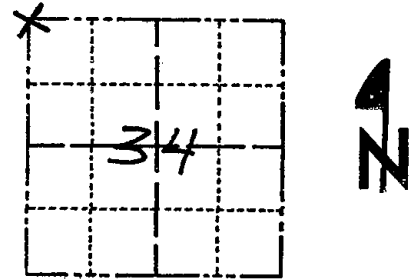


U.S. PUBLIC LAND SURVEY MONUMENT RECORD

ADAMS COUNTY

TYPE OF MONUMENT: _____
 STATE PLANE COORDINATES: N _____
 E _____
 ELEVATION — M.S.L. DATUM: _____
 THETA ANGLE: _____
 FIELD BOOK: _____ PAGE _____
 DRAWN BY: D. Riesop

CORNER NO. 107
 SECTION 34
 TOWN 19N
 RANGE 7E

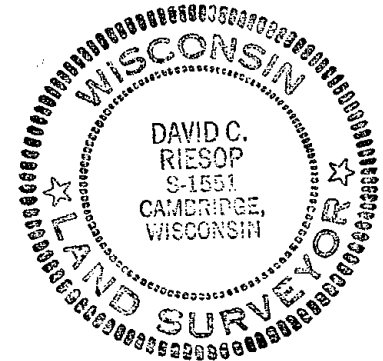


LOCATION
(Indicated by 'X')

BASIS FOR MONUMENT LOCATION

Show info such as: History of corner, with reference to Vol. and pg., dates, surveyor; exact description of monument replaced; if location computed, by taped or EDM traverse; landowner remarks, etc. (Use reverse side if necessary)
 (in conformance with Section A-E 502 of the Wisconsin Administrative Code)

SEAL:



The 2" iron pipe shown on tie sheet by Lance Habeck and dated 1/13/83 was to not be in agreement with the section summary as filed by the same surveyor.

A computed position for this corner was arrived at by using the same distances as shown by Paul Carroll from the NE corner, and the E 1/4 corner of Section 34.

This position was tied to the points previously used as ties for the 2" pipe.

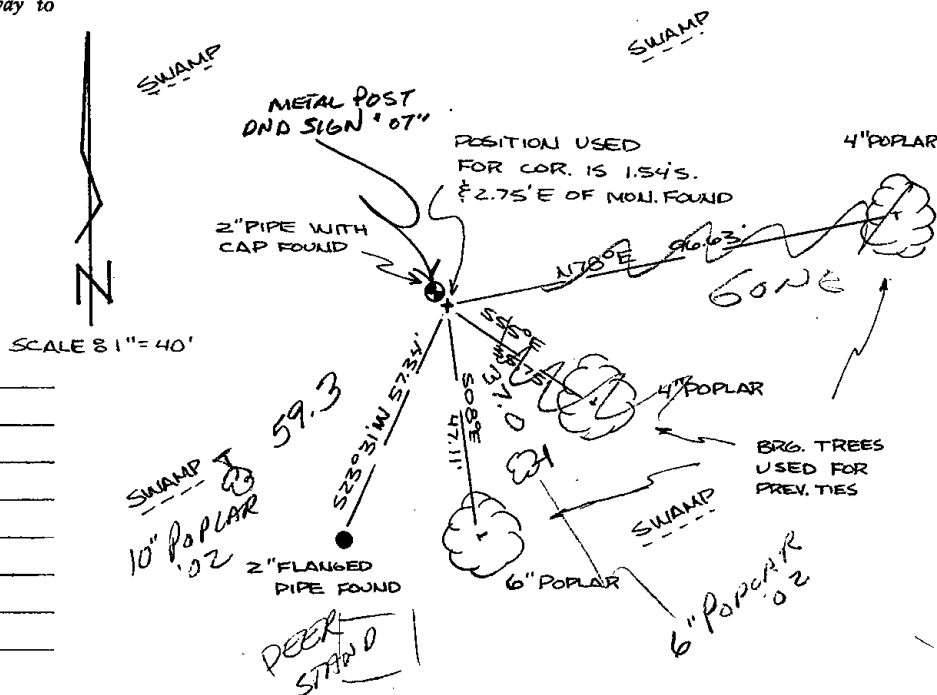
DATA SHOWN HERE ON CERTIFIED CORRECT:

David C. Riesop
 Registered Land Surveyor

DATE: 12/12/83

TIE SKETCH

Show at least four ties, also fence lines, roads, topo, size and type of witness trees and if off road - best way to arrive at corner.



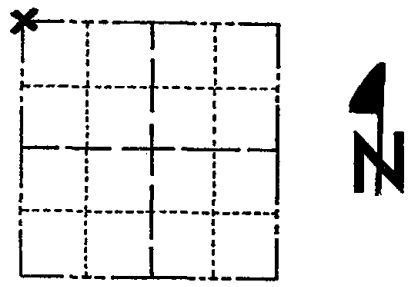
MAINTENANCE RECORD

Date	Init.	Remarks
6-11-92	JG-BS	DK
9-24-02	SS	2 NEW TIES

Government Land Corner Certificate

ADAMS County
 TYPE OF MONUMENT: 2"x.30" IRON PIPE / ALUM. CAP
 STATE PLANE COORDINATES: N _____
 E _____
 ELEVATION — M.S.L. DATUM: _____
 THETA ANGLE: _____
 FIELD BOOK: 92 PAGE 149
 DRAWN BY: LANCE HABECK

CORNER NO. 107
 SECTION 34
 TOWN 19
 RANGE 7



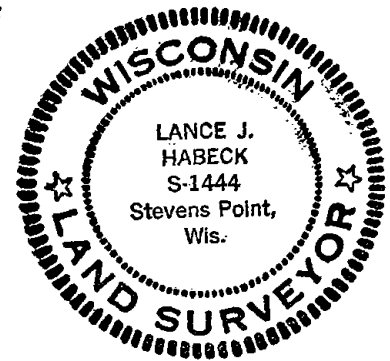
LOCATION
 (Indicated by 'X')

BASIS FOR MONUMENT LOCATION

Show info such as: History of corner, with reference to Vol. and pg., dates, surveyor; exact description of monument replaced; if location computed, by taped or EDM traverse; landowner remarks, etc. (Use reverse side if necessary)

This corner was set by retracing a section summary prepared by Paul T. Carroll. A 2"x 30" iron pipe was driven over a 1 1/4"x 72" iron pipe and an aluminum

SEAL:



DATA SHOWN HERE ON
 CERTIFIED CORRECT:

Lance J. Habeck
 Registered Land Surveyor

DATE: 1/13/83

TIE SKETCH

Show at least four ties, also fence lines, roads, topo, size and type of witness trees and if off road - best way to arrive at corner.

