

27 SECTION 19 TOWN 07 RANGE

ADAMS COUNTY

COUNTY CORNER NO: 109
ROMPORTOL ID: 41907270000

PUBLIC LAND SURVEY MONUMENT RECORD

TYPE OF MONUMENT: HARRISON (BROKEN-TOP)
ADAMS COUNTY COORDINATES, NAD 83 (2007)

N. 261321.690

E. 578018.965

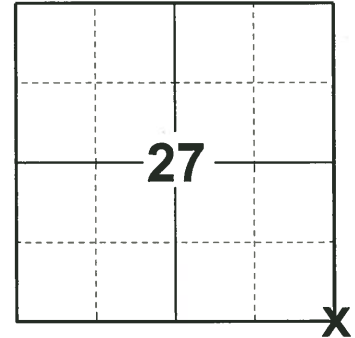
ELEVATION- - - - DATUM - - - -

FIELD WORK DATE: 05/14/2019

BASIS FOR MONUMENT LOCATION

1983 - PLS 1551 EVIDENCE OF ORIGINAL BEARING TREES AND ANY OCCUPATION IS GONE. CORNER WAS RESET BY EXTENDING A LINE FROM THE SE CORNER OF 34 THROUGH THE E 1/4 CORNER AND DOUBLING THE DISTANCE. THIS LOCATION IS THE POSITION USED FOR THIS CORNER IN THE SECTION SUMMARY OF SECTIONS 34 AND 35 BY SURVEYOR PAUL CARROLL, WHO APPARENTLY LOCATED THIS CORNER AT RECORD DISTANCE FROM THE NE CORNER OF 34 AND DOUBLED THE DISTANCE FROM THE SOUTH THROUGH A FENCE LINE AT THE E 1/4 CORNER.

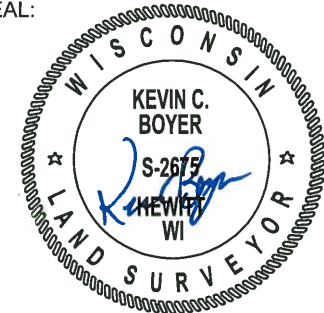
2019 - PLS 2675 FOUND HARRISON (BROKEN-TOP) 4" BELOW THE SWAMP SURFACE AND 4 WITNESSES. THE MONUMENT AGREES WITH ALL 4 WITNESSES. ACCEPTED THE HARRISON (BROKEN-TOP) AS THE CORNER LOCATION. SET 4 NEW TIES AND MEASURED TO THE EXISTING WITNESSES.



LOCATION

(INDICATE CORNER BY "X")

SEAL:

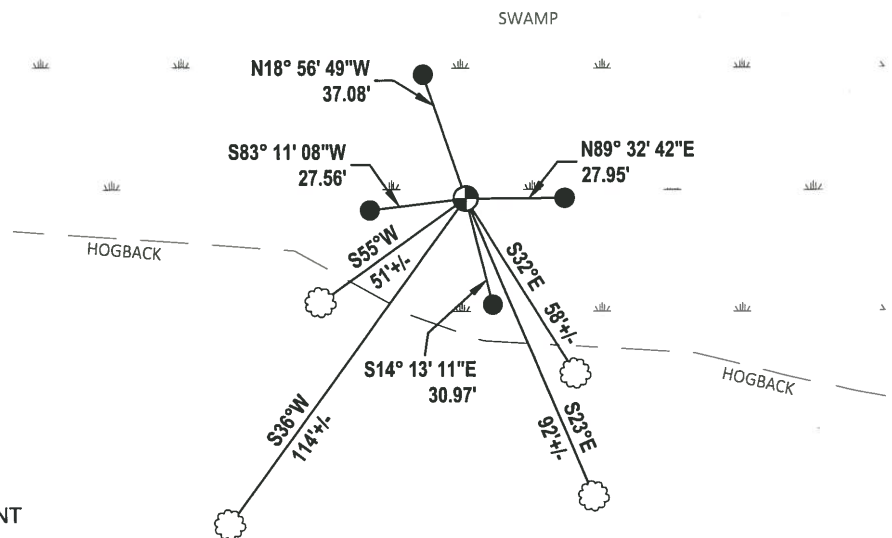
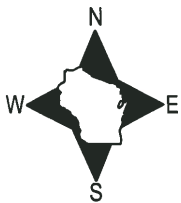


DATA SHOWN HERE ON THIS TIE SHEET IS CORRECT AND COMPLETE TO THE BEST OF MY KNOWLEDGE AND BELIEF.

PROFESSIONAL LAND SURVEYOR

DATE 6/4/19

TIE SKETCH



- SET 3/4" x 48" IRON REBAR, 1.50#/FT
- ⊕ FOUND HARRISON (BROKEN-TOP) MONUMENT
- VINYL "T" POST
- ☉ WITNESS TREE

U.S. PUBLIC LAND SURVEY MONUMENT RECORD

ADAMS COUNTY

TYPE OF MONUMENT: Standard Harrison

STATE PLANE COORDINATES: N _____

E _____

ELEVATION — M.S.L. DATUM: _____

THETA ANGLE: _____

FIELD BOOK: Adams County PAGE 61

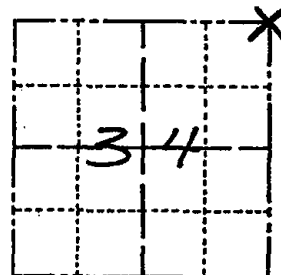
DRAWN BY: D. Riesop

CORNER NO. 109

SECTION 34

TOWN 19N

RANGE 7E



LOCATION
(Indicated by 'X')

SEAL:



BASIS FOR MONUMENT LOCATION

Show info such as: History of corner, with reference to Vol. and pg., dates, surveyor; exact description of monument replaced; if location computed, by taped or EDM traverse; landowner remarks, etc. (Use reverse side if necessary) (in conformance with Section A-E 502 of the Wisconsin Administrative Code)

Evidence of original bearing trees and any occupation is gone.

Corner was reset by extending a line from the SE cor. of 34 through the E 1/4 corner and doubling the distance.

This location is the position used for this corner in the section summaries of Sections 34 & 35 by surveyor Paul Carroll, who apparently located this corner at record distance from the NE corner of 34 and doubled the distance from the South through a fence line at the E 1/4 corner.

DATA SHOWN HERE ON CERTIFIED CORRECT:

David C. Riesop
Registered Land Surveyor

DATE: 8/26/83

*3" POPLAR 02
SIGN
38.0'*

TIE SKETCH

Show at least four ties, also fence lines, roads, topo, size and type of witness trees and if off road - best way to arrive at corner.

filed for record, this 28th
day of Sept 1983
per 59.60 Wisconsin Statutes.

D. Riesop
ADAMS COUNTY SURVEYOR

MAINTENANCE RECORD

Date	Init.	Remarks
6-24-92	JG	1-GONE, 1-NEW, COR OK
5-23-02	SS	2 NEW TIES
11-1-07	SS-JG	1-GONE, 4-LEFT, MON. OK

