

36
SECTION

19
TOWN

06
RANGE

ADAMS COUNTY

COUNTY CORNER NO: 120

ROMPORTOL ID: 41906362000

PUBLIC LAND SURVEY MONUMENT RECORD

TYPE OF MONUMENT: HARRISON
ADAMS COUNTY COORDINATES, NAD 83 (2007)

N. 258626.217

E. 557196.249

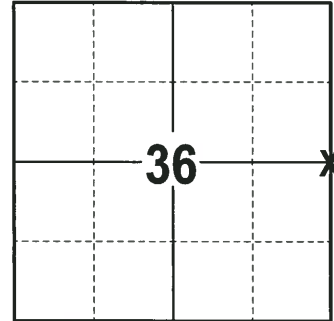
ELEVATION- DATUM

FIELD WORK DATE: 01/29/2018

BASIS FOR MONUMENT LOCATION

1977 - PLS 1103 RAN EDM/T2 TRAVERSE ALONG THE RANGE LINE FROM THE SOUTHWEST CORNER OF SECTION 31-19-7 TO THE NORTHWEST CORNER OF SECTION 18-19-7 TO DETERMINE THE SEARCH AREA FOR INVESTIGATION. FOUND NO EVIDENCE OF THE ORIGINAL CORNER OR ANY SUBSEQUENT RESURVEY MONUMENTATION. ALSO COULD NOT FIND ANY BEARING TREES. RELOCATED THE CORNER BY SINGLE PROPORTIONATE MEASUREMENT ON A LINE BETWEEN ADJACENT SECTION CORNERS. SET A HARRISON MONUMENT AT THE CALCULATED LOCATION AND TIED OUT.

2018 - PLS 2994 FOUND A HARRISON MONUMENT 2" ABOVE THE GROUND SURFACE. FOUND NO EVIDENCE OF ANY OF THE WITNESSES. ACCEPTED THE HARRISON MONUMENT AS THE BEST EVIDENCE OF THE CORNER LOCATION. SET 4 NEW TIES AND MEASURED TO THE TIES.



LOCATION
(INDICATE CORNER BY "X")

SEAL:



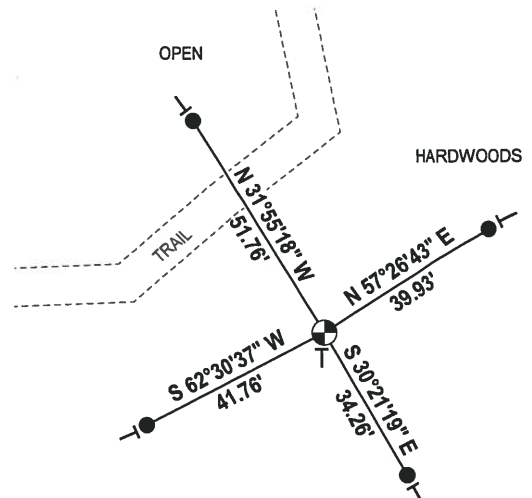
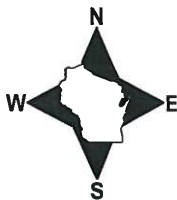
DATA SHOWN HERE ON THIS TIE SHEET IS CORRECT AND COMPLETE TO THE BEST OF MY KNOWLEDGE AND BELIEF.

PROFESSIONAL LAND SURVEYOR

DATE 3-1-19

- TIE SKETCH

NOTE: THE CORNER FALLS 35± SOUTHEAST OF THE CENTERLINE OF THE TRAIL.

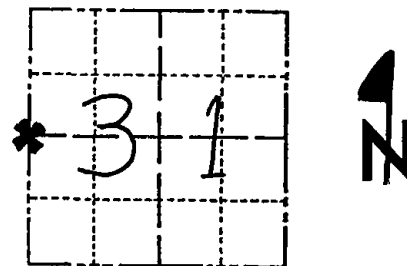


- 3/4" x 18" IRON REBAR SET, 1.50#/FT
- ⊕ HARRISON FOUND
- └ VINYL "T" POST

Government Land Corner Certificate

ADAMS County
 TYPE OF MONUMENT: HARRISON STD.
 STATE PLANE COORDINATES: N _____
 E _____
 ELEVATION — M.S.L. DATUM: _____
 THETA ANGLE: _____
 FIELD BOOK: 54 PAGE 24
 DRAWN BY: SCOTT SORENSEN

CORNER NO. 114
 SECTION 31
 TOWN 19
 RANGE 7



LOCATION
 (Indicated by 'X')

BASIS FOR MONUMENT LOCATION

Show info such as: History of corner, with reference to Vol. and pg., dates, surveyor; exact description of monument replaced; if location computed, by taped or EDM traverse; landowner remarks, etc. (Use reverse side if necessary)

Ran EDM/T2 traverse along range line from Southwest corner of Section 31-19-7 to Northwest corner of Section 18-19-7 to determine search area for investigation.

Could find no evidence of the original corner or any subsequent resurvey monumentation. Could find no bearing trees.

Relocated corner by single proportionate measure on line between adjacent section corners.

Set Harrison Monument on 8-31-1977.

SEAL:



DATA SHOWN HERE ON
 CERTIFIED CORRECT:

Dale C. Hagen
 Registered Land Surveyor

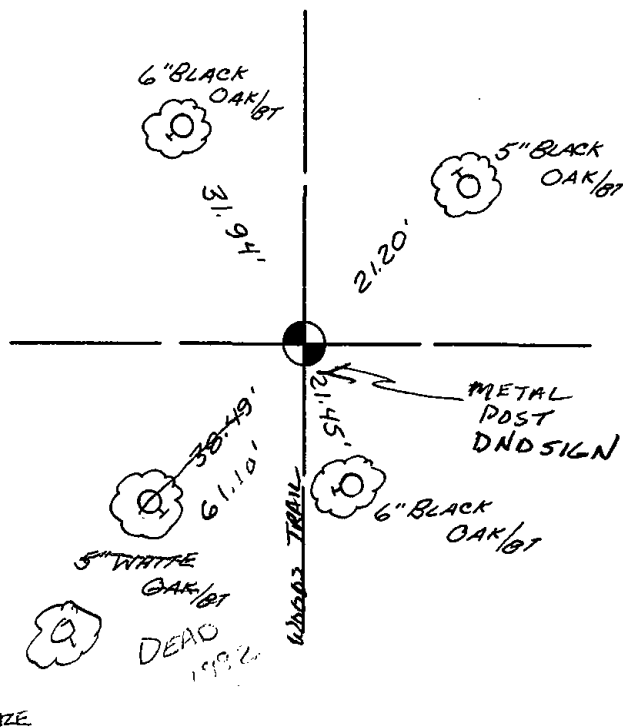
DATE: 11-2-1977

TIE SKETCH

Show at least four ties, also fence lines, roads, topo, size and type of witness trees' and if off road - best way to arrive at corner.

NOTE

Ties in trees to nail in disc.



MAINTENANCE RECORD

Date	Init.	Remarks
7-17-92	GR	
2-26-82	SG	OK
10-4-87	SG/CS	OK

ADAMS COUNTY

Survey Monument Record

TYPE OF MONUMENT: 2" x 30" IRON PIPE

STATE PLANE COORDINATES: N _____
E _____

ELEVATION — M.S.L. DATUM: _____

THETA ANGLE: _____

FIELD BOOK: 54 PAGE 30

No CHARGE

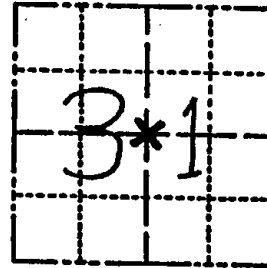
114A

CORNER NO. _____

SECTION 31

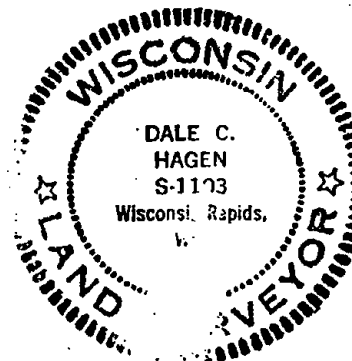
TOWN 19

RANGE 7



LOCATION
(Indicated by 'X')

SEAL:



BASIS FOR MONUMENT LOCATION

(Use reverse side if necessary)

Show info such as: History of corner, with reference to Vol. and pg, dates, surveyor; exact description of monument replaced; if location computed, by taped or EDM traverse; landowner remarks, etc.

Established center of Section 31 at intersection of Quarter Lines.

CERTIFIED CORRECT:

Dale C. Hagen
Registered Land Surveyor
DATE: December 27, 1977

TIES OK Mar 2 95 K Carlson ✓

TIE SKETCH

(Show at least four ties)

NOTE

Ties in trees to nail in disc.

