

31  
SECTION

19  
TOWN

07  
RANGE

# ADAMS COUNTY

COUNTY CORNER NO: 115

ROMPORTOL ID: 41907312000

## PUBLIC LAND SURVEY MONUMENT RECORD

TYPE OF MONUMENT: HARRISON  
ADAMS COUNTY COORDINATES, NAD 83 (2007)

N. 258628.668

E. 562174.935

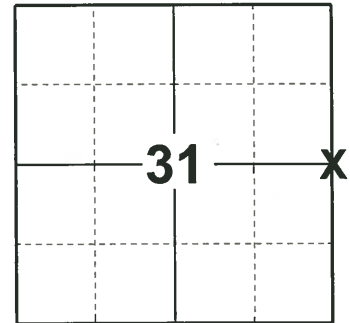
ELEVATION- \_\_\_\_\_ DATUM \_\_\_\_\_

FIELD WORK DATE: 05/16/2019

### BASIS FOR MONUMENT LOCATION

1977 - PLS 1103 RAN EDM/T2 TRAVERSE AROUND SECTIONS 30 & 31 TO DETERMINE SEARCH AREA FOR INVESTIGATION. COULD FIND NO EVIDENCE OF THE ORIGINAL CORNER OR ANY BEARING TREES. COULD FIND NO REMONUMENTATION OF THIS CORNER. RELOCATED CORNER BY SINGLE PROPORTIONATE MEASURE ON LINE BETWEEN ADJACENT SECTION CORNERS. SET MONUMENT ON 9-6-1977.

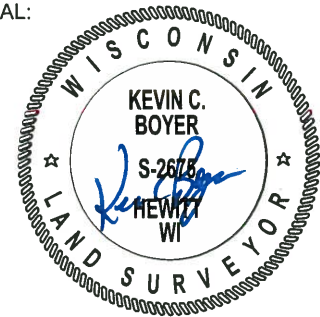
2019 - PLS 2675 FOUND HARRISON 3" ABOVE THE SWAMP SURFACE AND 3 WITNESSES. THE MONUMENT AGREES WITH ALL 3 WITNESSES. ACCEPTED THE HARRISON AS THE CORNER LOCATION. SET 4 NEW TIES AND MEASURED TO THE EXISTING WITNESSES.



### LOCATION

(INDICATE CORNER BY "X")

SEAL:

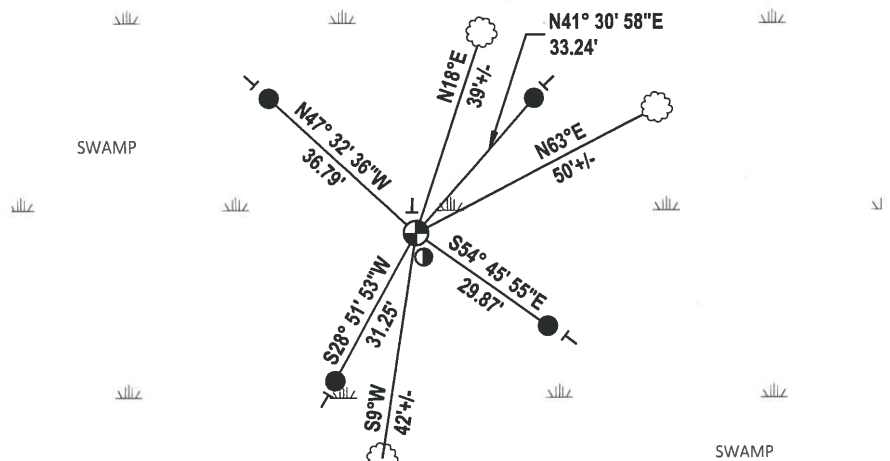


DATA SHOWN HERE ON THIS TIE SHEET IS CORRECT AND COMPLETE TO THE BEST OF MY KNOWLEDGE AND BELIEF.

PROFESSIONAL LAND SURVEYOR

DATE 6/4/19

### TIE SKETCH

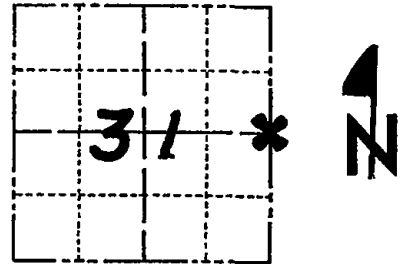


- SET 3/4" x 48" IRON REBAR, 1.50#/FT
- ⊙ FOUND WOOD POST WITH DND SIGN
- ⊕ FOUND HARRISON MONUMENT
- ⊥ VINYL "T" POST
- ☁ WITNESS TREE

# Government Land Corner Certificate

ADAMS County  
 TYPE OF MONUMENT: HARRISON STD.  
 STATE PLANE COORDINATES: N \_\_\_\_\_  
 E \_\_\_\_\_  
 ELEVATION — M.S.L. DATUM: \_\_\_\_\_  
 THETA ANGLE: \_\_\_\_\_  
 FIELD BOOK: 54 PAGE 32  
 DRAWN BY: SCOTT SORENSEN

CORNER NO. 115  
 SECTION 31  
 TOWN 19  
 RANGE 7



LOCATION  
(Indicated by 'X')

## BASIS FOR MONUMENT LOCATION

Show info such as: History of corner, with reference to Vol. and pg., dates, surveyor; exact description of monument replaced; if location computed, by taped or EDM traverse; landowner remarks, etc. (Use reverse side if necessary)

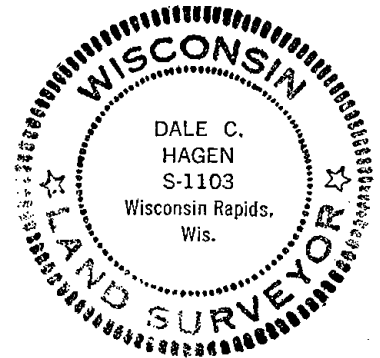
Ran EDM/T2 traverse around Sections 30 & 31 to determine search area for investigation.

Could find no evidence of the original corner or any bearing trees. Could find no remonumentation of this corner.

Relocated corner by single proportionate measure on line between adjacent section corners.

Set monument on 9-6-1977.

SEAL:



DATA SHOWN HERE ON  
CERTIFIED CORRECT:

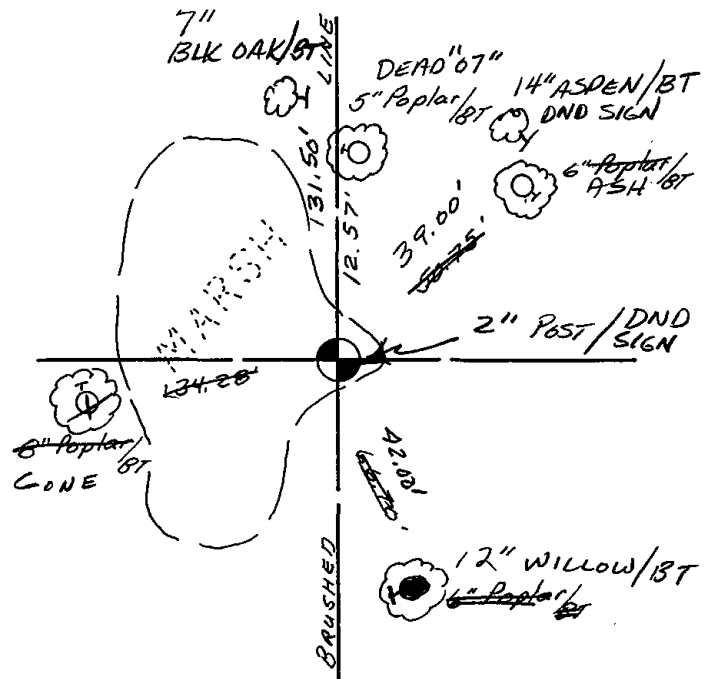
*Dale C. Hagen*  
Registered Land Surveyor  
DATE: 12-27-1977

## TIE SKETCH

Show at least four ties, also fence lines, roads, topo, size and type of witness trees' and if off road - best way to arrive at corner.

### NOTE

Ties in trees to nail in disc.



## MAINTENANCE RECORD

Date	Init.	Remarks
7-1-92	JG-BS	OK
10-24-07	JG-GR	4-GONE, 4-NEW