

33 SECTION 19 TOWN 07 RANGE

# ADAMS COUNTY

COUNTY CORNER NO: 117  
 ROMPORTOL ID: 41907332000

## PUBLIC LAND SURVEY MONUMENT RECORD

TYPE OF MONUMENT: HARRISON (BROKEN-TOP)  
 ADAMS COUNTY COORDINATES, NAD 83 (2007)

N. 258678.046  
 E. 572754.436

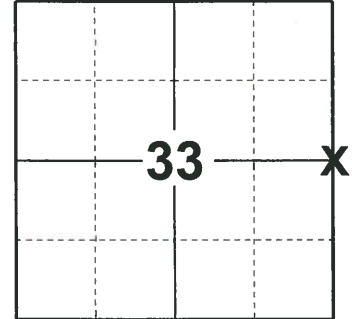
ELEVATION-      DATUM     

FIELD WORK DATE: 05/21/2019

### BASIS FOR MONUMENT LOCATION

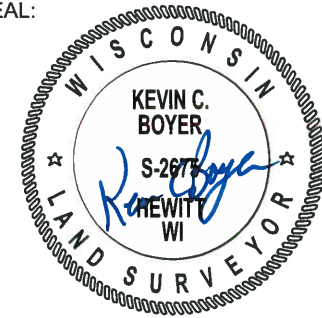
1983 - PLS 1444 THIS CORNER WAS SET EQUIDISTANT AND ON LINE BETWEEN SECTION CORNERS AND CONFORMS TO A SECTION SUMMARY BY PAUL T. CARROLL.

2019 - PLS 2675 FOUND HARRISON (BROKEN-TOP) 12" BELOW THE ROAD SURFACE, 1 TIE, AND 2 WITNESSES. THE MONUMENT AGREES WITH THE TIE AND BOTH WITNESSES. ACCEPTED THE HARRISON (BROKEN-TOP) AS THE CORNER LOCATION. SET 3 NEW TIES AND MEASURED TO THE EXISTING TIE AND WITNESSES.



**LOCATION**  
 (INDICATE CORNER BY "X")

SEAL:



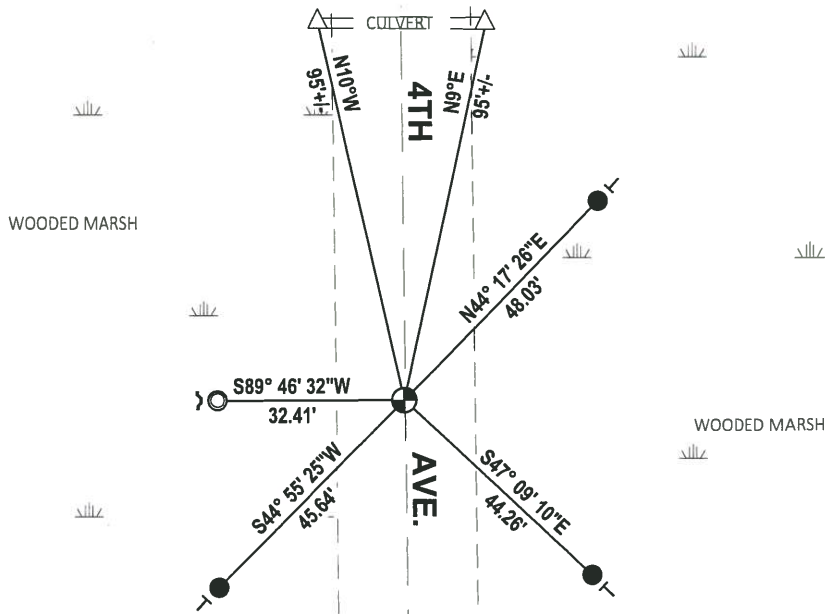
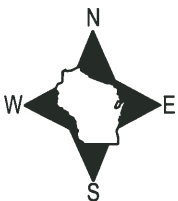
DATA SHOWN HERE ON THIS TIE SHEET IS CORRECT AND COMPLETE TO THE BEST OF MY KNOWLEDGE AND BELIEF.

PROFESSIONAL LAND SURVEYOR

DATE 6/4/19

### TIE SKETCH

NOTE: THE CORNER LANDS ON THE CENTERLINE OF 4TH AVE.

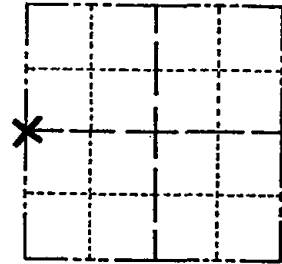


- SET 3/4" x 18" IRON REBAR, 1.50#/FT
- △ FOUND PK NAIL
- FOUND 1-1/4" O.D. IRON PIPE
- ⊕ FOUND HARRISON (BROKEN-TOP) MONUMENT
- ┌ STEEL FENCE POST
- └ VINYL "T" POST

# Government Land Corner Certificate

ADAMS County  
 TYPE OF MONUMENT: HARRISON  
 STATE PLANE COORDINATES: N \_\_\_\_\_  
 E \_\_\_\_\_  
 ELEVATION — M.S.L. DATUM: \_\_\_\_\_  
 THETA ANGLE: \_\_\_\_\_  
 FIELD BOOK: 92 PAGE 146  
 DRAWN BY: LANCE HABECK

CORNER NO. 117  
 SECTION 34  
 TOWN 19  
 RANGE 7



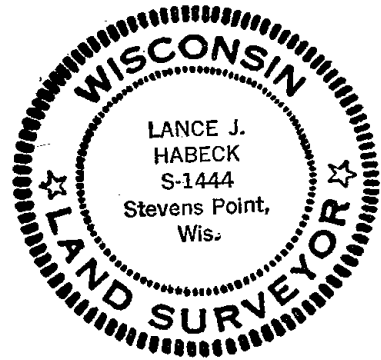
LOCATION  
(Indicated by 'X')

## BASIS FOR MONUMENT LOCATION

Show info such as: History of corner, with reference to Vol. and pg., dates, surveyor; exact description of monument replaced; if location computed, by taped or EDM traverse; landowner remarks, etc. (Use reverse side if necessary)

This corner was set equidistant and on line between section corners and conforms to a section summary by Paul T. Carroll.

SEAL:



DATA SHOWN HERE ON  
CERTIFIED CORRECT:

*Lance J. Habeck*  
Registered Land Surveyor

DATE: 1/13/83

## TIE SKETCH

Show at least four ties, also fence lines, roads, topo, size and type of witness trees' and if off road - best way to arrive at corner.

