

31
SECTION

19
TOWN

07
RANGE

ADAMS COUNTY

COUNTY CORNER NO: 122

ROMPORTOL ID: 41907310020

PUBLIC LAND SURVEY MONUMENT RECORD

TYPE OF MONUMENT: HARRISON (BROKEN-TOP)
ADAMS COUNTY COORDINATES, NAD 83 (2007)

N. 255978.298

E. 559538.980

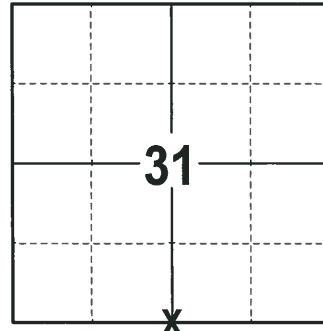
ELEVATION- DATUM

FIELD WORK DATE: 01/30/2018

BASIS FOR MONUMENT LOCATION

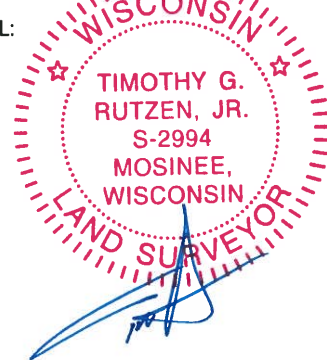
1977 - PLS 1103 RAN EDM/TRANSIT TRAVERSE AROUND SECTION 31 AND ADJACENT SECTIONS TO DETERMINE THE SEARCH AREA FOR INVESTIGATION. EXCAVATION WITH A BACKHOE BY ANTHONY B. KIEDROWSKI, ADAMS COUNTY SURVEYOR, YIELDED NO EVIDENCE OF THE ORIGINAL CORNER OR ANY REMONUMENTATION. COULD NOT FIND ANY BEARING TREES. CALCULATED THE LOCATION BY SINGLE PROPORTIONATE MEASUREMENT OF ADJACENT SECTION CORNERS. SET A HARRISON MONUMENT AT THE CALCULATED LOCATION AND TIED OUT.

2018 - PLS 2994 FOUND A HARRISON MONUMENT WITH A BROKEN-TOP 12" BELOW THE ROAD SURFACE. FOUND NO EVIDENCE OF ANY OF THE WITNESSES. ACCEPTED THE HARRISON MONUMENT WITH A BROKEN-TOP AS THE BEST EVIDENCE OF THE CORNER LOCATION. SET 4 NEW TIES AND MEASURED TO THE TIES.



LOCATION
(INDICATE CORNER BY "X")

SEAL:



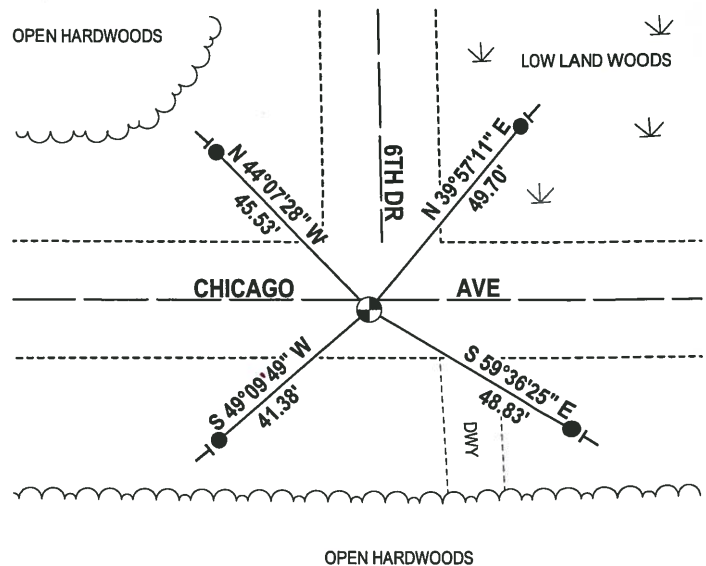
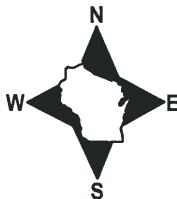
DATA SHOWN HERE ON THIS TIE SHEET IS CORRECT AND COMPLETE TO THE BEST OF MY KNOWLEDGE AND BELIEF.

PROFESSIONAL LAND SURVEYOR

DATE 3-1-18

- TIE SKETCH

NOTE: THE CORNER FALLS 2± SOUTH OF THE CENTERLINE OF CHICAGO AVE AND 3± WEST OF THE CENTERLINE OF 6TH DR.



- 3/4" x 18" IRON REBAR SET, 1.50#/FT
- ⊕ HARRISON (BROKEN-TOP) FOUND
- VINYL "T" POST

ADAMS COUNTY

Survey Monument Record

TYPE OF MONUMENT: HARRISON STD.

STATE PLANE COORDINATES: N _____
E _____

ELEVATION — M.S.L. DATUM: _____

THETA ANGLE: _____

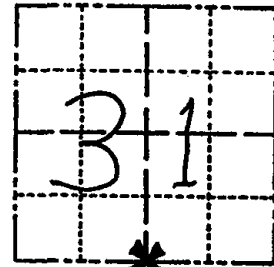
FIELD BOOK: 54 PAGE 29

CORNER NO. 122

SECTION 31

TOWN 19

RANGE 7



LOCATION
(Indicated by 'X')

SEAL:

BASIS FOR MONUMENT LOCATION

(Use reverse side if necessary)

Show info such as: History of corner, with reference to Vol. and pg, dates, surveyor; exact description of monument replaced; if location computed, by taped or EDM traverse; landowner remarks, etc.

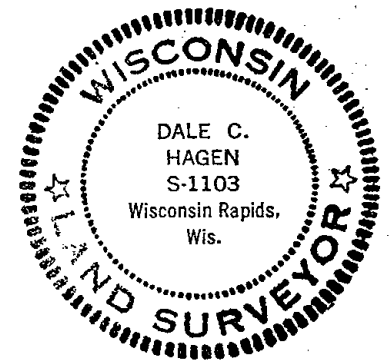
Ran EDM/T2 traverse around Section 31 and many adjacent sections to determine search area for investigation.

Excavation with backhoe by Anthony B. Kiedrowski, Adams County Surveyor, yielded no evidence of the original corner or any remonumentation. Could find no bearing trees.

Relocated corner by single proportionate measure on line between adjacent section corners.

Set Harrison Monument on 9-2-77.

3-17-82	COR. OK	GR-SS
2-9-87	OK	GR-SS
1-8-92	OK	KZ-JG
3-18-97	OK	JG-SS
1-30-02	OK	JG



CERTIFIED CORRECT:

Dale C. Hagen
Registered Land Surveyor
DATE: 11-2-77

TIE SKETCH

10-4-07 - OK, JG-OS

(Show at least four ties)

NOTE

Ties in trees to nail in disc.

