

33 SECTION    19 TOWN    07 RANGE

# ADAMS COUNTY

COUNTY CORNER NO: 126  
 ROMPORTOL ID: 41907330020

## PUBLIC LAND SURVEY MONUMENT RECORD

TYPE OF MONUMENT: HARRISON (BROKEN-TOP)  
 ADAMS COUNTY COORDINATES, NAD 83 (2007)

N. 256006.788

E. 570124.373

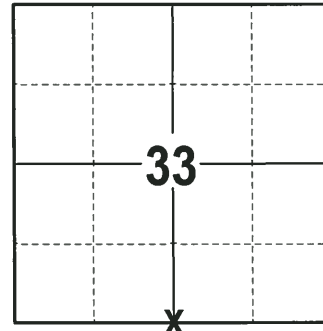
ELEVATION- \_\_\_\_\_ DATUM \_\_\_\_\_

FIELD WORK DATE: 01/31/2018

### BASIS FOR MONUMENT LOCATION

1977 - PLS 1103 RAN EDM/T2 TRAVERSE ALONG THE TOWN LINE FROM THE SW OF SECTION 31 TO THE SE OF SECTION 35 TO DETERMINE THE SEARCH AREA FOR INVESTIGATION. EXCAVATION WITH A BACKHOE YIELDED NO EVIDENCE OF THE ORIGINAL CORNER OR ANY SUBSEQUENT REMONUMENTATION. COULD NOT FIND ANY EVIDENCE OF THE ORIGINAL BEARING TREES. CALCULATED THE CORNER BY SINGLE PROPORTIONATE MEASUREMENT ON A LINE BETWEEN ADJACENT SECTION CORNERS. SET A HARRISON MONUMENT AND TIED OUT.

2018 - PLS 2994 FOUND A HARRISON MONUMENT WITH A BROKEN-TOP 12" BELOW THE ROAD SURFACE AND 1 WITNESS. THE MONUMENT AGREES WITH THE EXISTING WITNESS. ACCEPTED THE HARRISON MONUMENT WITH A BROKEN-TOP AS THE CORNER LOCATION. SET 4 NEW TIES AND MEASURED TO THE TIES AND WITNESS.



**LOCATION**  
(INDICATE CORNER BY "X")

SEAL:



DATA SHOWN HERE ON THIS TIE SHEET IS CORRECT AND COMPLETE TO THE BEST OF MY KNOWLEDGE AND BELIEF.

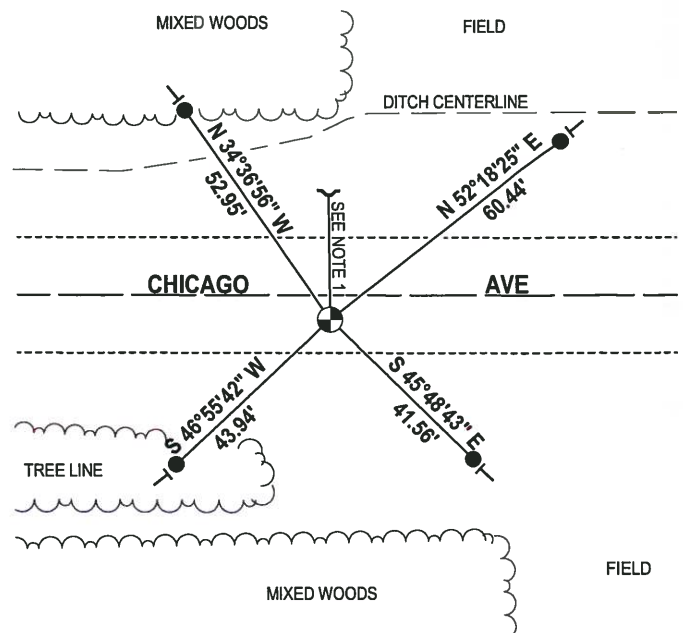
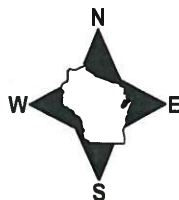
PROFESSIONAL LAND SURVEYOR

DATE 3-1-18

### - TIE SKETCH -

NOTE 1: THE WITNESS DND SIGN IS N 00°34'38" W, 23.42' OF THE CORNER LOCATION.

NOTE 2: THE CORNER FALLS 5± SOUTH OF THE CENTERLINE OF CHICAGO AVE.



- 3/4" x 18" IRON REBAR SET, 1.50#/FT
- ⊕ HARRISON (BROKEN-TOP) FOUND
- ↙ WITNESS DND SIGN FOUND
- VINYL "T" POST

**ADAMS COUNTY**

**Survey Monument Record**

TYPE OF MONUMENT: HARRISON STD.

STATE PLANE COORDINATES: N \_\_\_\_\_

E \_\_\_\_\_

ELEVATION — M.S.L. DATUM: \_\_\_\_\_

THETA ANGLE: \_\_\_\_\_

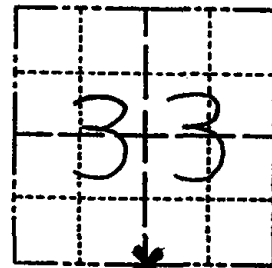
FIELD BOOK: 54 PAGE 31

CORNER NO. 126

SECTION 33

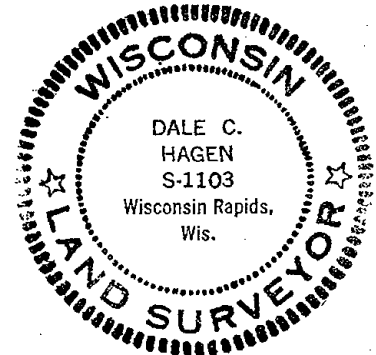
TOWN 19

RANGE 7



LOCATION  
(Indicated by 'X')

SEAL:



**BASIS FOR MONUMENT LOCATION**

(Use reverse side if necessary)

Show info such as: History of corner, with reference to Vol. and pg. dates, surveyor; exact description of monument replaced; if location computed, by taped or EDM traverse; landowner remarks, etc.

Ran EDM/T2 traverse along Town Line from SW of 31 to SE of 35 to determine search area for investigation.

Excavation with backhoe yielded no evidence of the original corner or any subsequent remonumentation. Could find no evidence of original bearing trees.

Relocated corner by single proportionate measure on line between adjacent section corners.

Set monument on 9-6-77.

- 3-17-82 COR. OK GR-SS
- 2-9-87 OK CR-SS
- 1-8-92 OK KE-JG
- 3-18-97 1-GONE, MON OK JG-SS
- 1-30-02 1-GONE, 2-NEW TIES JG
- 1-GONE, 4-LOST, 10-11-07-JG

CERTIFIED CORRECT:

*Dale C. Hagen*  
Registered Land Surveyor  
DATE: December 27, 1977

**TIE SKETCH**

(Show at least four ties)

**NOTE**

Ties in trees to nail in disc.

