

PUBLIC LAND SURVEY MONUMENT RECORD

TYPE OF MONUMENT: HARRISON
 ADAMS COUNTY COORDINATES, NAD 83 (2007)

N. 256062.943

E. 583350.182

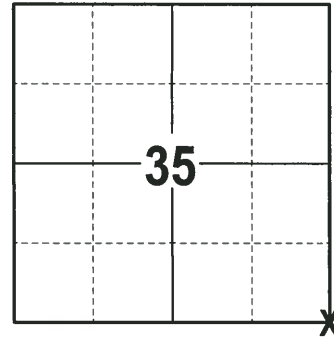
ELEVATION- DATUM

FIELD WORK DATE: 01/31/2018

BASIS FOR MONUMENT LOCATION

1972 - PLS 878 EXCAVATED AREA WITH A BACKHOE AND FOUND A STONE. SET A 30" HARRISON MONUMENT ABOVE AND TIED OUT.

2018 - PLS 2994 FOUND A HARRISON MONUMENT 18" BELOW THE ROAD SURFACE AND 1 WITNESS. THE MONUMENT AGREES WITH THE EXISTING WITNESS. ACCEPTED THE HARRISON MONUMENT AS THE CORNER LOCATION. SET 4 NEW TIES AND MEASURED TO THE TIES AND WITNESS.



LOCATION
 (INDICATE CORNER BY "X")

SEAL:



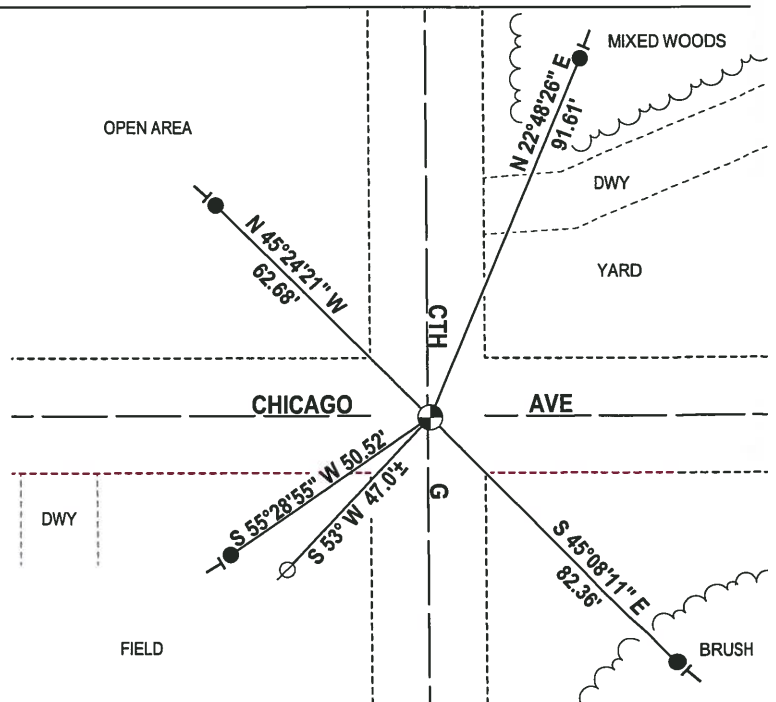
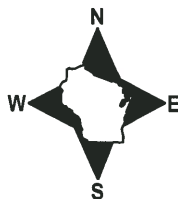
DATA SHOWN HERE ON THIS TIE SHEET IS CORRECT AND COMPLETE TO THE BEST OF MY KNOWLEDGE AND BELIEF.

PROFESSIONAL LAND SURVEYOR

DATE 3-1-18

- TIE SKETCH -

NOTE: THE CORNER FALLS 0.5'± SOUTH OF THE CENTERLINE OF CHICAGO AVE AND 0.5'± EAST OF THE CENTERLINE OF CTH G.



- 3/4" x 18" IRON REBAR SET, 1.50#/FT
- ⊕ HARRISON FOUND
- ⊘ WITNESS POWER POLE FOUND
- └ VINYL "T" POST

ADAMS COUNTY

Survey Monument Record

TYPE OF MONUMENT: 30" HARRISON

STATE PLANE COORDINATES: N

E

ELEVATION - M.S.L. DATUM:

THETA ANGLE:

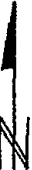
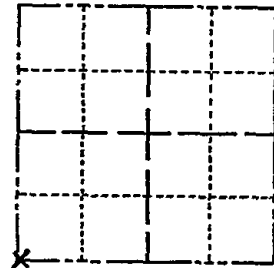
FIELD BOOK: 107 PAGE 25

CORNER NO. 215

SECTION 36

TOWN 19

RANGE 7



LOCATION (Indicated by 'X')

SEAL:



BASIS FOR MONUMENT LOCATION

(Use reverse side if necessary)

Show info such as: History of corner, with reference to Vol. and pg, dates, surveyor; exact description of monument replaced; if location computed, by taped or EDM traverse; landowner remarks, etc.

Found stone and set monument, Excavated area ~~ix~~ with backhoe. October 19, 1972

Anthony B. Kiedrowski R.L.S. 878

CORNER	O.K.	4-4-77	RD-SS
"	"	3-17-82	GR-SS
"	"	2-9-87	GE-SS
"	"	1-8-92	KZ-JG

CERTIFIED CORRECT:

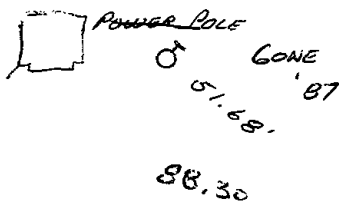
Anthony B. Kiedrowski
Registered Land Surveyor

DATE: 2-22-73

TIE SKETCH

CORNER	OK	3-18-97	JG-SS
"	"	1-30-02	JG
(Show at least four ties)	"	9-21-07	JG

CONCRETE PUMP PAD



6" BLACK OAK '87
NAIL WASHER IN OAK
4" Black '87

CHICAGO AVE.

2±



2648.85' TO S 1/4 X.

47.00'
POWER POLE

95.21
NAIL WASHER
6" Black oak '87