

36
SECTION

19
TOWN

07
RANGE

ADAMS COUNTY

COUNTY CORNER NO: 132
ROMPORTOL ID: 41907360020

PUBLIC LAND SURVEY MONUMENT RECORD

TYPE OF MONUMENT: HARRISON
ADAMS COUNTY COORDINATES, NAD 83 (2007)

N. 256078.526

E. 585998.756

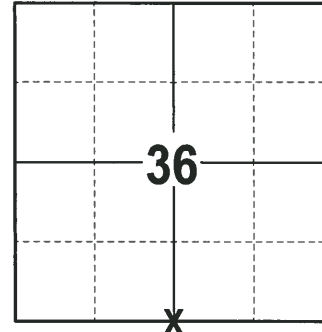
ELEVATION- - - DATUM - -

FIELD WORK DATE: 01/31/2018

BASIS FOR MONUMENT LOCATION

1973 - PLS 878 SET A 30" HARRISON ON LINE AND BETWEEN SECTION CORNERS AND TIED OUT.

2018 - PLS 2994 FOUND A HARRISON MONUMENT 2" BELOW THE ROAD SURFACE. FOUND NO EVIDENCE OF ANY OF THE WITNESSES. ACCEPTED THE HARRISON MONUMENT AS THE BEST EVIDENCE OF THE CORNER LOCATION. SET 4 NEW TIES AND MEASURED TO THE TIES.



LOCATION
(INDICATE CORNER BY "X")

SEAL:



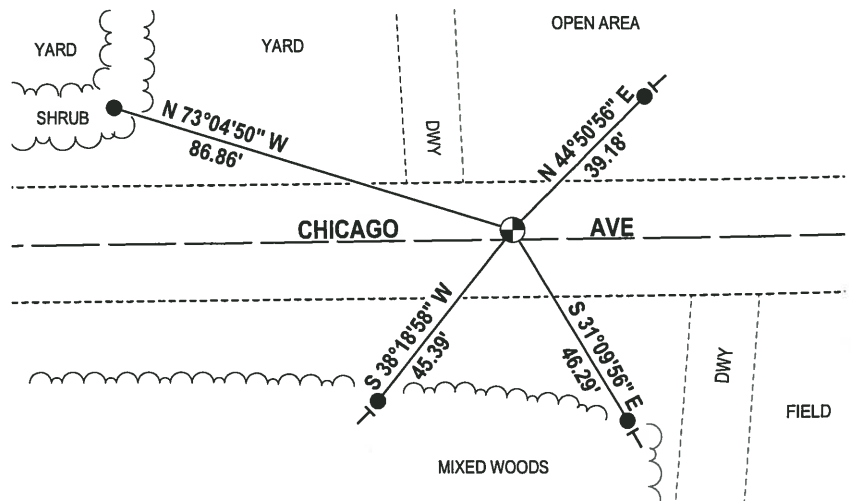
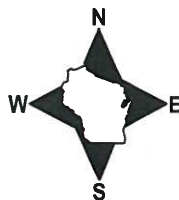
DATA SHOWN HERE ON THIS TIE SHEET IS CORRECT AND COMPLETE TO THE BEST OF MY KNOWLEDGE AND BELIEF.

PROFESSIONAL LAND SURVEYOR

DATE 3-1-18

- TIE SKETCH -

NOTE: THE CORNER FALLS 2"± NORTH OF THE CENTERLINE OF CHICAGO AVE.



- 3/4" x 18" IRON REBAR SET, 1.50#/FT
- ⊙ HARRISON FOUND
- VINYL "T" POST

ADAMS COUNTY

CORNER NO. 220

Survey Monument Record

SECTION 36

TYPE OF MONUMENT: 30" HARRISON

TOWN 19

STATE PLANE COORDINATES: N _____

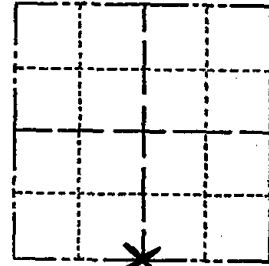
RANGE 7

E _____

ELEVATION — M.S.L. DATUM: _____

THETA ANGLE: _____

FIELD BOOK: 107 PAGE 34



LOCATION (Indicated by 'X')

SEAL:

BASIS FOR MONUMENT LOCATION

(Use reverse side if necessary)

Show info such as: History of corner, with reference to Vol. and pg, dates, surveyor; exact description of monument replaced; if location computed, by taped or EDM traverse; landowner remarks, etc.

Set on line between section corners.



CORNER	O.K.	4-4-77	RN-55
"	"	3-18-82	GR-55
"	"	2-9-87	GL-55
"	"	1-8-92	KZ-56
"	"	3-18-97	JG-55

1-GONE, 1-NEW TIE, 1-30-02 JG

CERTIFIED CORRECT:

Anthony B. Kiedrowski
Registered Land Surveyor

DATE: 2/22/73

TIE SKETCH OK, 9-21-07-JG

(Show at least four ties)

