

* 1 3 9 *

139

ADAMS COUNTY

CORNER NO. 445

Survey Monument Record

SECTION 1

TYPE OF MONUMENT: Harrison Standard

TOWN 20

STATE PLANE COORDINATES: N _____

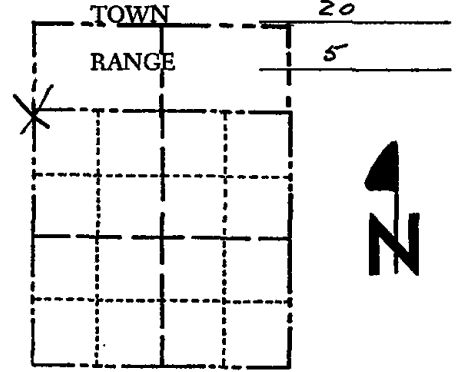
RANGE 5

E _____

ELEVATION — M.S.L. DATUM: _____

THETA ANGLE: _____

FIELD BOOK: _____ PAGE _____



LOCATION
(Indicated by 'X')

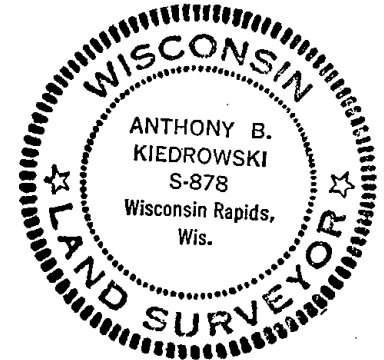
SEAL:

BASIS FOR MONUMENT LOCATION

(Use reverse side if necessary)

Show info such as: History of corner, with reference to Vol. and pg, dates, surveyor; exact description of monument replaced; if location computed, by taped or EDM traverse; landowner remarks, etc.

Monumented point set by Kiedrowski for the Tuttle survey. Section was traversed. Point fits quite well.



CERTIFIED CORRECT:

Anthony B. Kiedrowski
Registered Land Surveyor

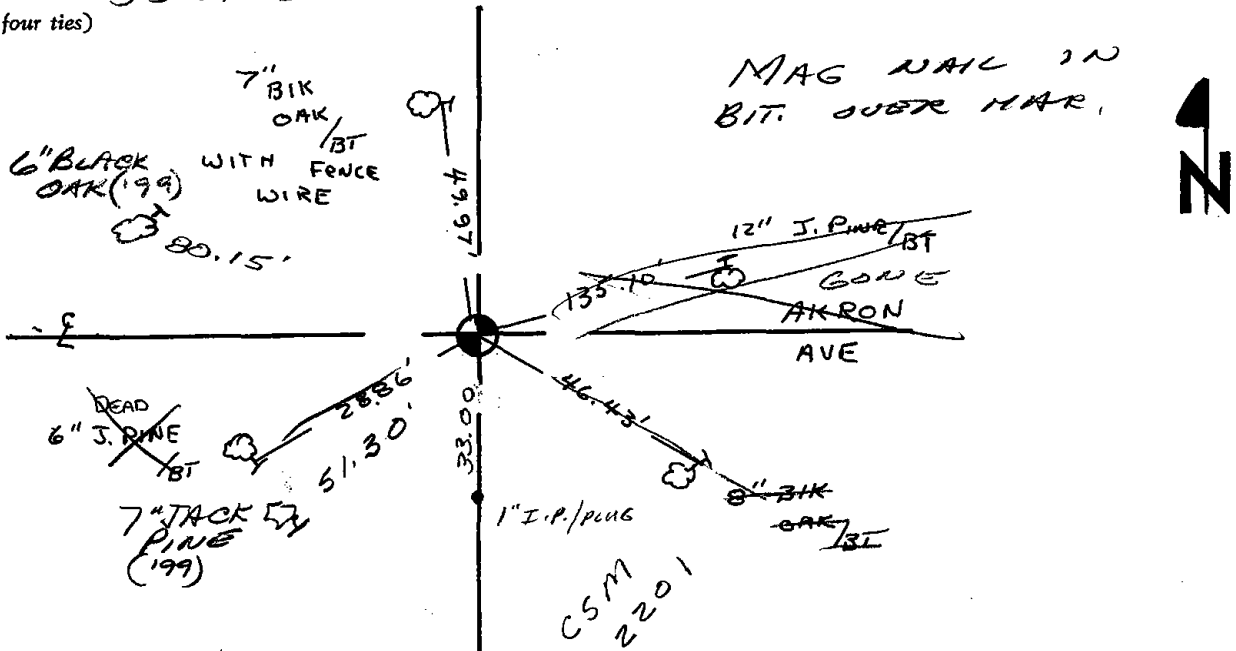
DATE: July 31, 1974

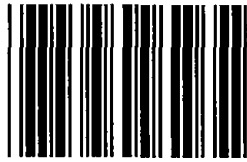
OK 2-11-94 CR-55
 OK 11-5-79 BS-55
 ADD 1" IP PER CSM 1-23-81 SS
 2 NEW TIES 2-16-99 JG-55

TIE SKETCH OK 8-30-04 SS
 " 3-5-09 SS

(Show at least four ties)

All ties to nail and disc.





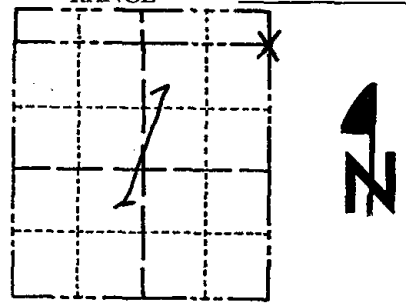
* 1 4 0 *

140

Government Land Corner Certificate

ADAMS County
 TYPE OF MONUMENT: HARRISON
 STATE PLANE COORDINATES: N _____
 E _____
 ELEVATION — M.S.L. DATUM: _____
 THETA ANGLE: _____
 FIELD BOOK: 86 PAGE 85
 DRAWN BY: N.J.

CORNER NO. 140
 SECTION 1
 TOWN 20
 RANGE 6



LOCATION (Indicated by 'X')

BASIS FOR MONUMENT LOCATION

Show info such as: History of corner, with reference to Vol. and pg., dates, surveyor; exact description of monument replaced; if location computed, by taped or EDM traverse; landowner remarks, etc. (Use reverse side if necessary)

No record of any resurveys. No evidence of the original or subsequent monument found. This corner is set on a straight line between section corners and in proportion to the original notes.

Ok 7-9-84 GR-DK

*AREA HAS BEEN RESHAPED & SOME FILLED
 BRASS CAP ONLY TIE LEFT - NEED TO RESURVEY
 TO RESET? SS 6-30-04*

SEAL:



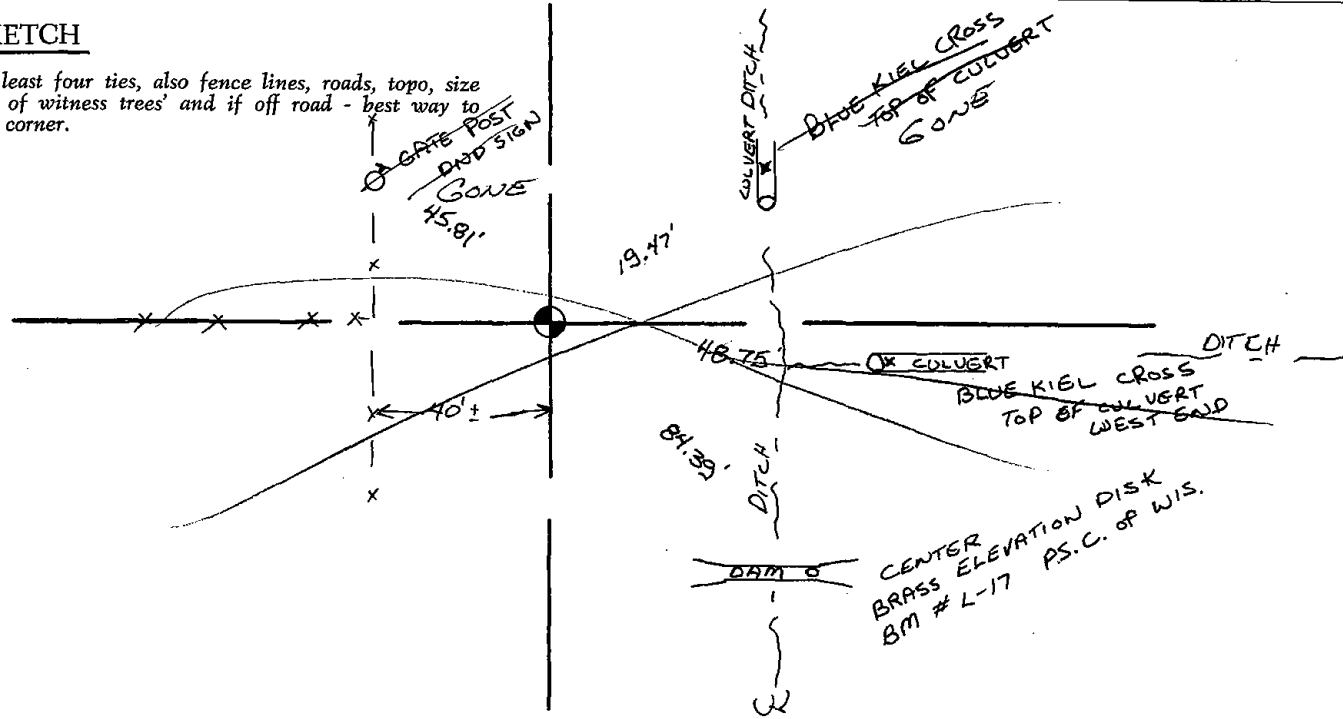
DATA SHOWN HERE ON CERTIFIED CORRECT:

Anthony B. Kiedrowski
Registered Land Surveyor

DATE: 1/5/81

TIE SKETCH

Show at least four ties, also fence lines, roads, topo, size and type of witness trees and if off road - best way to arrive at corner.





* 1 4 1 *

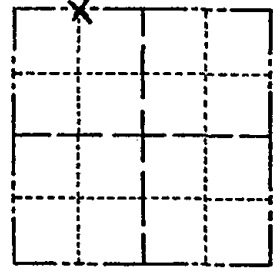
141

Government Land Corner Certificate

141

Adams County
 TYPE OF MONUMENT: 1" IP & PLUG
 STATE PLANE COORDINATES: N _____
 E _____
 ELEVATION — M.S.L. DATUM: _____
 THETA ANGLE: _____
 FIELD BOOK: 69 PAGE 127
 DRAWN BY: _____

CORNER NO. 40 x N¹/₄ x NW¹/₄
 SECTION 27
 TOWN 20
 RANGE 5



LOCATION
(Indicated by 'X')

BASIS FOR MONUMENT LOCATION

Show info such as: History of corner, with reference to Vol. and pg., dates, surveyor; exact description of monument replaced; if location computed, by taped or EDM traverse; landowner remarks, etc. (Use reverse side if necessary)

Set on an extension of the north line of the northeast quarter of section 27 and 33 feet west of an existing 4 x 4 concrete monument.

SEAL:



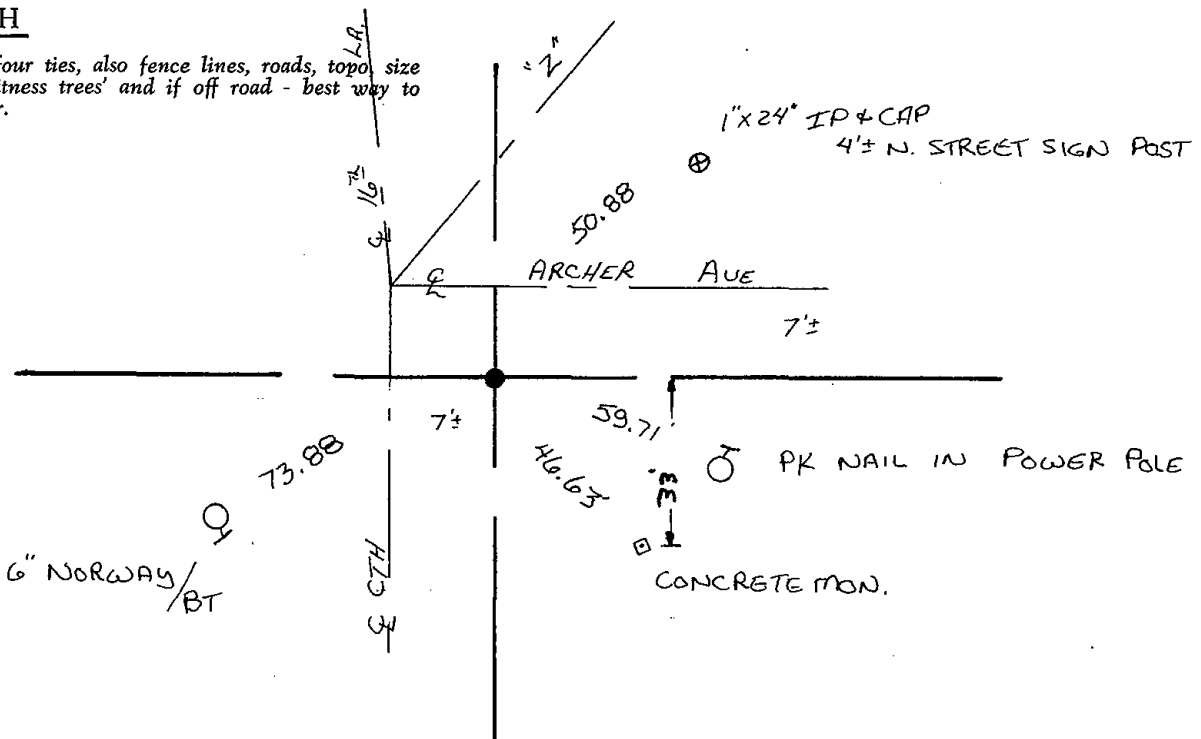
DATA SHOWN HERE ON
CERTIFIED CORRECT:

Anthony B. Kiedrowski
Registered Land Surveyor

DATE: 7/15/81

TIE SKETCH

Show at least four ties, also fence lines, roads, topo, size and type of witness trees and if off road - best way to arrive at corner.





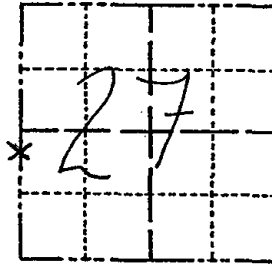
142

Government Land Corner Certificate

MEANDER
W 1/4 CORNER

ADAMS County
 TYPE OF MONUMENT: 2" I.P. w/ CAP
 STATE PLANE COORDINATES: N _____
 E _____
 ELEVATION — M.S.L. DATUM: _____
 THETA ANGLE: _____
 FIELD BOOK: _____ PAGE _____
 DRAWN BY: L. COOMBS

CORNER NO. 142
 SECTION 27
 TOWN 20
 RANGE 5



BASIS FOR MONUMENT LOCATION

Show info such as: History of corner, with reference to Vol. and pg., dates, surveyor; exact description of monument replaced; if location computed, by taped or EDM traverse; landowner remarks, etc. (Use reverse side if necessary)

This corner is set on a line which is indicated as being the section line according to the Amundson Subdivision as surveyed by RLS Edmund Novak, 1963.

SEAL:



DATA SHOWN HERE ON CERTIFIED CORRECT:

Anthony B. Kiedrowski
 Registered Land Surveyor

DATE: 7/15/81

TIE SKETCH

Show at least four ties, also fence lines, roads, topo, size and type of witness trees and if off road - best way to arrive at corner.

