

## PUBLIC LAND SURVEY MONUMENT RECORD

TYPE OF MONUMENT: HARRISON  
ADAMS COUNTY COORDINATES, NAD 83 (2007)

N. 321806.314

E. 522867.848

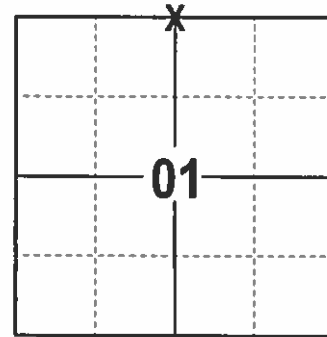
ELEVATION-      DATUM     

FIELD WORK DATE: 12/28/2016

### BASIS FOR MONUMENT LOCATION

1981 - PLS 878 SCRAPED THE AREA WITH A FRONT END LOADER AND FOUND NOTHING. SET A HARRISON HALFWAY BETWEEN THE NW AND NE CORNERS ON A STRAIGHT LINE BETWEEN THE ADJACENT WOOD COUNTY CORNERS.

2017 - PLS 2994 FOUND EXISTING HARRISON 2 INCHES BELOW THE GROUND SURFACE AND 1 WITNESS TREE AND 1 EXISTING TIE. THE HARRISON AGREES WITH THE EXISTING WITNESS TREE AND TIE. ACCEPTED HARRISON AND SET 3 NEW TIES.



LOCATION  
(INDICATE CORNER BY "X")

SEAL:

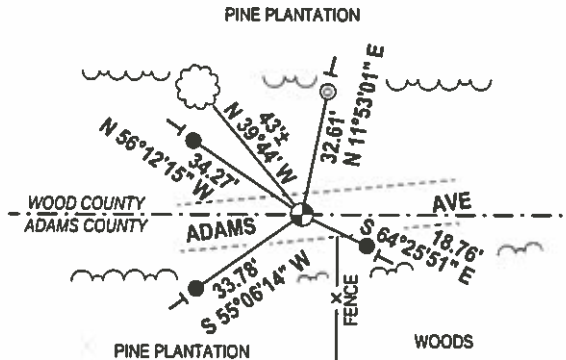
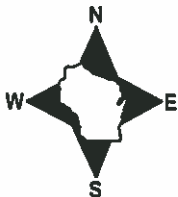


DATA SHOWN HERE ON THIS TIE SHEET IS CORRECT AND COMPLETE TO THE BEST OF MY KNOWLEDGE AND BELIEF.

PROFESSIONAL LAND SURVEYOR

DATE 2/9/17

### TIE SKETCH



- 3/4" x 18" IRON REBAR SET, 1.50#/FT
- ⊙ 3/4" REBAR FOUND
- ⊙ HARRISON FOUND
- ┌ VINYL "T" POST
- ☁ WITNESS TREE FOUND

# Government Land Corner Certificate

ADAMS County

TYPE OF MONUMENT: HARRISON

STATE PLANE COORDINATES: N \_\_\_\_\_  
E \_\_\_\_\_

ELEVATION — M.S.L. DATUM: \_\_\_\_\_

THETA ANGLE: \_\_\_\_\_

FIELD BOOK: 69 PAGE 118

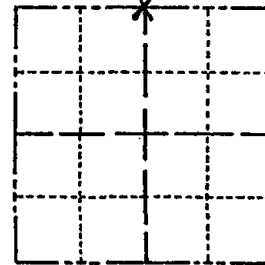
DRAWN BY: L.C.

CORNER NO. 12

SECTION 1

TOWN 20

RANGE 5



LOCATION  
(Indicated by 'X')

SEAL:



DATA SHOWN HERE ON  
CERTIFIED CORRECT:

*Anthony B. Kiedrowski*  
Registered Land Surveyor

DATE: 6/17/81

## BASIS FOR MONUMENT LOCATION

Show info such as: History of corner, with reference to Vol. and pg., dates, surveyor; exact description of monument replaced; if location computed, by taped or EDM traverse; landowner remarks, etc. (Use reverse side if necessary)

Scraped area with front end loader. Found nothing. This corner is set half way between the NW and NE corners of this section, and on a straight line between the adjacent Wood County Corners.

2-GONE, 2-NEW TIES 3-4-94 JG SS  
OK, 3-1-99- JG-SS  
1 NEW TIE 8-30-04 SS  
2 " " 9-29-09 SS

## TIE SKETCH

Show at least four ties, also fence lines, roads, topo, size and type of witness trees and if off road - best way to arrive at corner.

