

PUBLIC LAND SURVEY MONUMENT RECORD

TYPE OF MONUMENT: HARRISON (BROKEN-TOP)
ADAMS COUNTY COORDINATES, NAD 83 (2007)

N. 316621.785

E. 520277.484

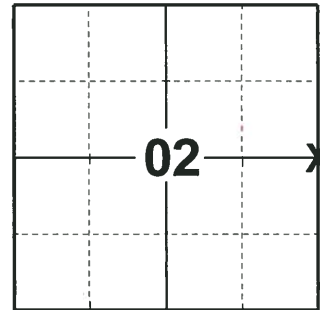
ELEVATION- DATUM

FIELD WORK DATE: 05/31/2018

BASIS FOR MONUMENT LOCATION

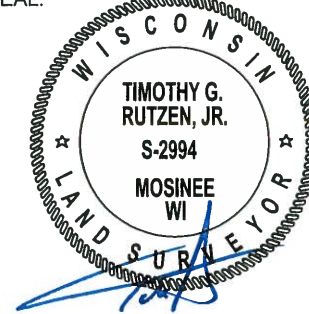
1979 - PLS 878 EXCAVATED WITH A BACKHOE AND FOUND THE BOTTOM 8" OF 3" DIA. DRIVEN WOOD POST, VERY ROTTEN. NO RESURVEYS OF RECORD OTHER THAN A PLAT NORTHEAST OF HERE. THIS POSITION DOES NOT MATCH TIES TO THE PLAT. REPLACED THE FOUND POST WITH A HARRISON MONUMENT AND TIED OUT.

2018 - PLS 2994 FOUND A HARRISON MONUMENT WITH A BROKEN-TOP 20" BELOW THE ROAD SURFACE AND 1 WITNESS. THE MONUMENT AGREES WITH THE EXISTING WITNESS. ACCEPTED THE HARRISON MONUMENT WITH A BROKEN-TOP AS THE CORNER LOCATION. SET 4 NEW TIES AND MEASURED TO THE TIES AND WITNESS.



LOCATION
(INDICATE CORNER BY "X")

SEAL:



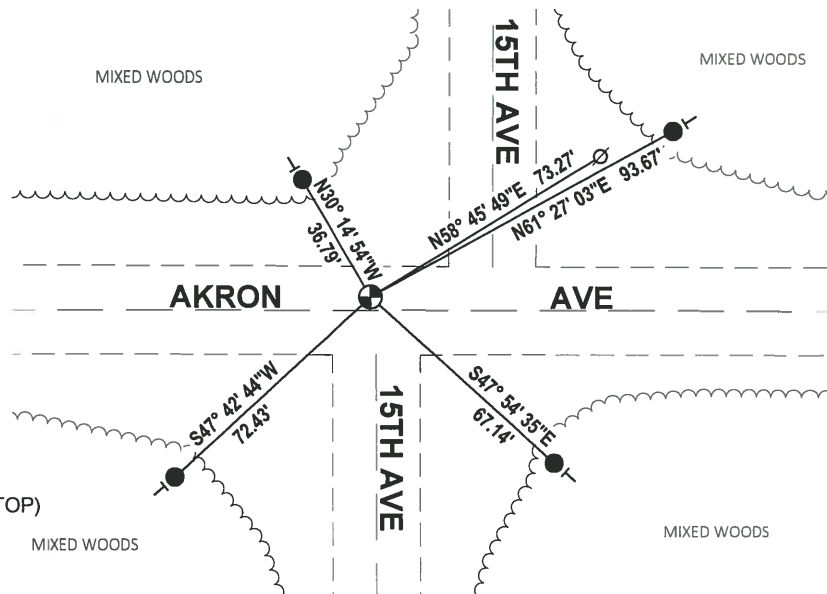
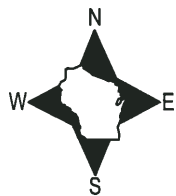
DATA SHOWN HERE ON THIS TIE SHEET IS CORRECT AND COMPLETE TO THE BEST OF MY KNOWLEDGE AND BELIEF.

PROFESSIONAL LAND SURVEYOR

DATE 7-18-18

TIE SKETCH

NOTE: THE CORNER FALLS 3'± NORTH OF THE CENTERLINE OF AKRON DR AND 1.5'± WEST OF THE CENTERLINE OF THE SOUTH SIDE OF 15TH AVE.

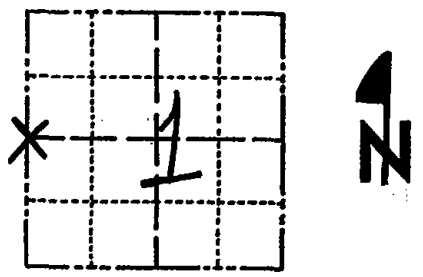


- SET 3/4" x 18" IRON REBAR, 1.50#/FT
- ⊕ FOUND HARRISON MONUMENT (BROKEN-TOP)
- ∅ WITNESS POWER POLE
- | VINYL "T" POST

Government Land Corner Certificate

ADAMS County
 TYPE OF MONUMENT: HARRISON
 STATE PLANE COORDINATES: N _____
 E _____
 ELEVATION — M.S.L. DATUM: _____
 THETA ANGLE: _____
 FIELD BOOK: 54 (102) PAGE 57 (23)
 DRAWN BY: B. SULLIVAN

CORNER NO. 19
 SECTION 1
 TOWN 20
 RANGE 5



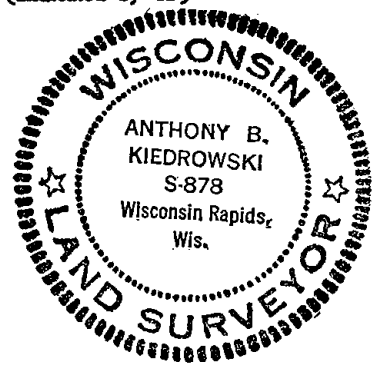
LOCATION
 (Indicated by 'X')

BASIS FOR MONUMENT LOCATION

Show info such as: History of corner, with reference to Vol. and pg., dates, surveyor; exact description of monument replaced; if location computed, by taped or EDM traverse; landowner remarks, etc. (Use reverse side if necessary)

Excavated with backhoe. Found bottom 8" of 3" dia driven wood post, very rotten. No resurveys of record other than plat northeast of here. This point does not match tie to plat. Replaced post found with Harrison.

SEAL:



DATA SHOWN HERE ON
 CERTIFIED CORRECT:

Anthony B. Kiedrowski
 Registered Land Surveyor

DATE: 5/7/79

TIE SKETCH

Show at least four ties, also fence lines, roads, topo, size and type of witness trees' and if off road - best way to arrive at corner.

