

## PUBLIC LAND SURVEY MONUMENT RECORD

TYPE OF MONUMENT: HARRISON (BROKEN-TOP)  
 ADAMS COUNTY COORDINATES, NAD 83 (2007)

N. 311367.437

E. 514932.919

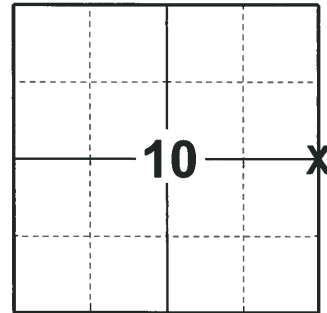
ELEVATION-      DATUM     

FIELD WORK DATE: 06/05/2018

### BASIS FOR MONUMENT LOCATION

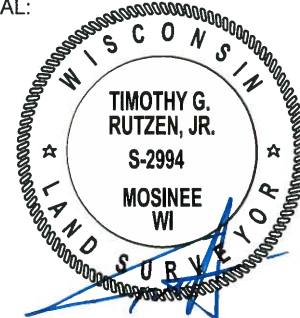
1973- PLS 878 CALCULATED A POSITION AT THE INTERSECTION OF THE CENTERLINE OF CTH D AND OLD FENCE LINE EXTENDED AFTER VERIFYING LOCATION BY A TRAVERSE OF THE NORTH 1/2 OF SECTION. NO OTHER EVIDENCE OF CORNER COULD BE FOUND. SET HARRISON AND TIED OUT CORNER.

2018- PLS 2994 FOUND A HARRISON MONUMENT WITH A BROKEN-TOP 18" BELOW GROUND SURFACE AND 1 TIE. THE MONUMENT AGREES WITH THE EXISTING TIE. ACCEPTED THE HARRISON MONUMENT WITH A BROKEN-TOP AS THE CORNER LOCATION. SET 3 NEW TIES AND MEASURED TO THE TIES.



**LOCATION**  
 (INDICATE CORNER BY "X")

SEAL:

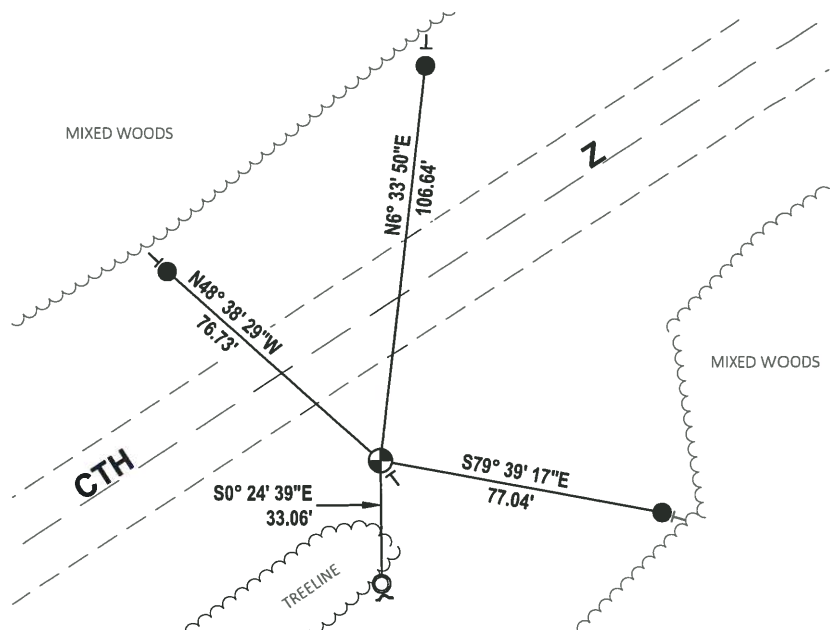
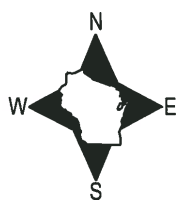


DATA SHOWN HERE ON THIS TIE SHEET IS CORRECT AND COMPLETE TO THE BEST OF MY KNOWLEDGE AND BELIEF.

PROFESSIONAL LAND SURVEYOR

DATE 7-18-18

### - TIE SKETCH



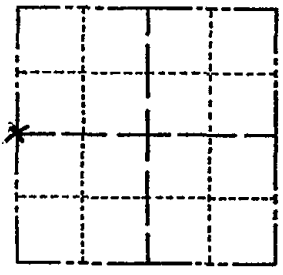
- SET 3/4" x 18" IRON REBAR, 1.50#/FT
- FOUND 1-1/4" O.D. IRON PIPE
- ⊕ FOUND HARRISON MONUMENT (BROKEN-TOP)
- ┌ STEEL FENCE POST
- └ VINYL "T" POST

ADAMS COUNTY

Survey Monument Record

TYPE OF MONUMENT: 30" HARRISON  
STATE PLANE COORDINATES: N \_\_\_\_\_  
E \_\_\_\_\_  
ELEVATION - M.S.L. DATUM: \_\_\_\_\_  
THETA ANGLE: \_\_\_\_\_  
FIELD BOOK: 108 PAGE 90

CORNER NO. 304  
SECTION 11  
TOWN 20  
RANGE 5



LOCATION (Indicated by 'X')

BASIS FOR MONUMENT LOCATION

(Use reverse side if necessary)

Show info such as: History of corner, with reference to Vol. and pg, dates, surveyor; exact description of monument replaced; if location computed, by taped or EDM traverse; landowner remarks, etc.

Set at the intersection of the centerline of C.T.H. "D" and old fence line extended after verifying location by a traverse of the N $\frac{1}{2}$  of section.  
No other evidence of corner could be found.

SEAL:



OVER

ok -7-27-84 SS-DK

OK 11-5-79 SS-SS  
2 NEW TIES 3-3-94 CR-JG  
OK 2-16-99-JG-SS

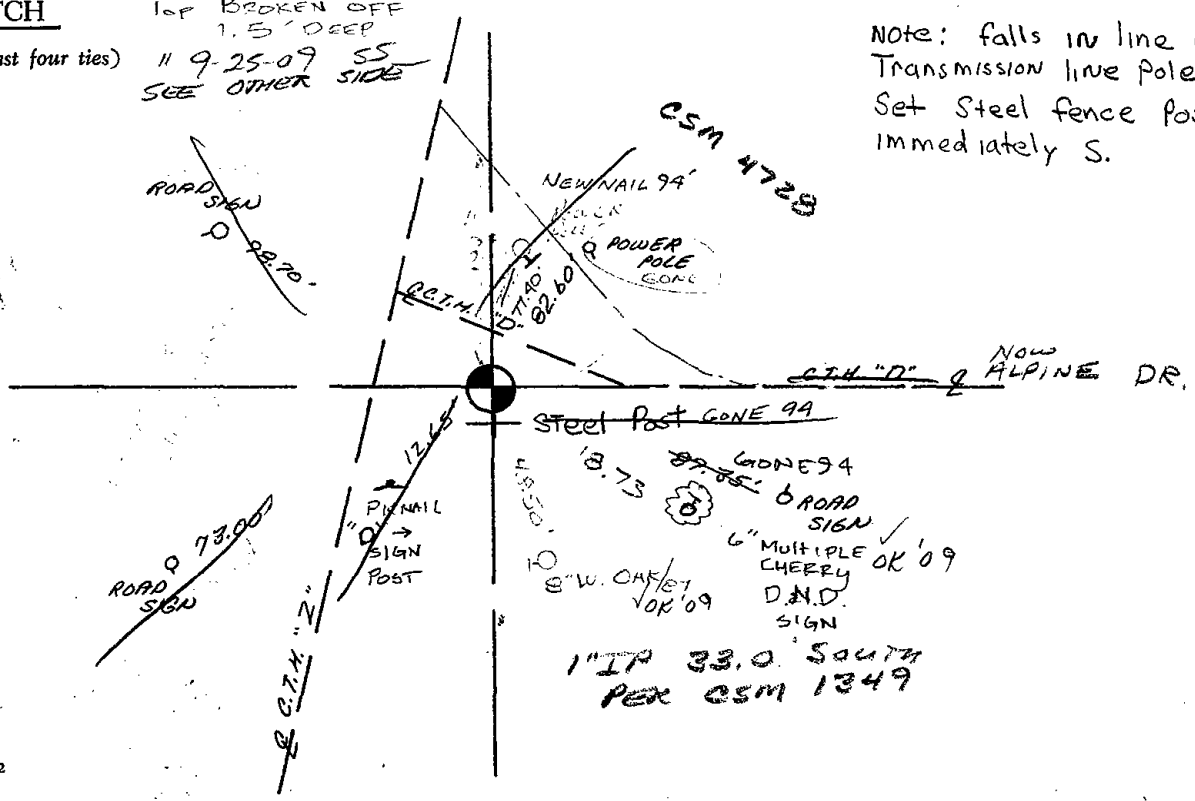
CERTIFIED CORRECT:

*Anthony B. Kiedrowski*  
Registered Land Surveyor  
DATE: 9-18-73

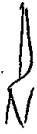
TIE SKETCH

(Show at least four ties)

TOP BROKEN OFF  
1.5' DEEP  
11-9-25-09 SS  
SEE OTHER SIDE



Note: falls in line w/  
Transmission line pole  
Set steel fence post  
Immediately S.



SKETCH FROM  
ADJACENT CSMS

