

PUBLIC LAND SURVEY MONUMENT RECORD

TYPE OF MONUMENT: HARRISON
 ADAMS COUNTY COORDINATES, NAD 83 (2007)

N. 308710.903

E. 514955.893

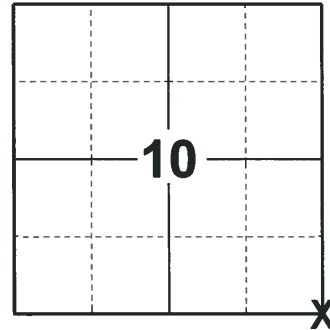
ELEVATION- - - - - DATUM - - - - -

FIELD WORK DATE: 06/05/2018

BASIS FOR MONUMENT LOCATION

1973- PLS 878 CALCULATED POSITION AT LOCATION OF OLD FENCE CORNER, AFTER VERIFYING IT BY A TRAVERSE OF THE NORTH 1/2 OF SECTION. SET HARRISON AND TIED OUT CORNER.

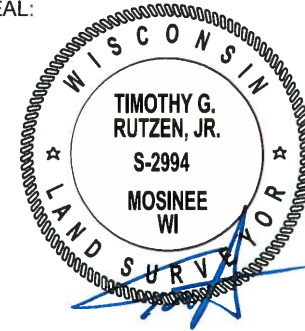
2018- PLS 2994 FOUND A HARRISON MONUMENT 2" ABOVE GROUND SURFACE. FOUND NO EVIDENCE OF ANY OF THE WITNESSES. ACCEPTED HARRISON MONUMENT AS THE BEST EVIDENCE OF THE CORNER LOCATION. SET 4 NEW TIES AND MEASURED TO TIES.



LOCATION

(INDICATE CORNER BY "X")

SEAL:



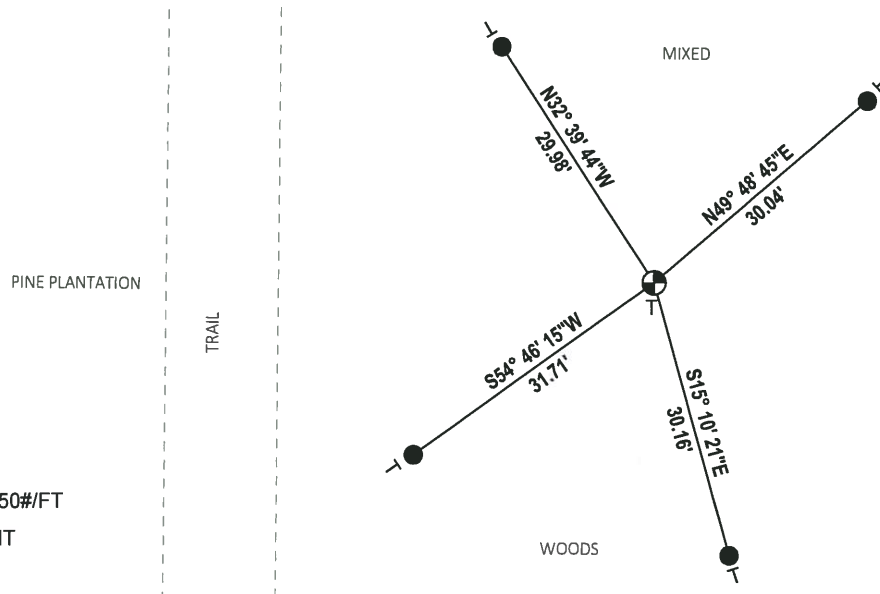
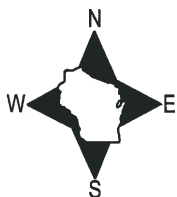
DATA SHOWN HERE ON THIS TIE SHEET IS CORRECT AND COMPLETE TO THE BEST OF MY KNOWLEDGE AND BELIEF.

PROFESSIONAL LAND SURVEYOR

DATE 7-18-18

TIE SKETCH

NOTE: CORNER FALLS 46'± EAST OF THE CENTERLINE OF THE TRAIL.



- SET 3/4" x 18" IRON REBAR, 1.50#/FT
- ⊕ FOUND HARRISON MONUMENT
- | VINYL "T" POST

ADAMS COUNTY

CORNER NO. 302

Survey Monument Record

SECTION 11

TYPE OF MONUMENT: 30" HARRISON

TOWN 20

STATE PLANE COORDINATES: N

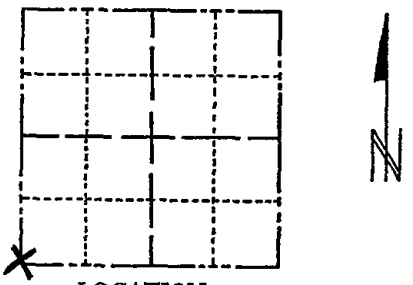
RANGE 5

E

ELEVATION - M.S.L. DATUM:

THETA ANGLE:

FIELD BOOK: 108 PAGE 90



LOCATION (Indicated by 'X')

SEAL:

BASIS FOR MONUMENT LOCATION

(Use reverse side if necessary)

Show info such as: History of corner, with reference to Vol. and pg, dates, surveyor; exact description of monument replaced; if location computed, by taped or EDM traverse; landowner remarks, etc.



CERTIFIED CORRECT:

Anthony B. Kiedrowski
Registered Land Surveyor

DATE: 9-18-73

Set corner at location of old fence corner, after verifying it by a traverse of the N $\frac{1}{2}$ of section.

Enter on power line North off Apache ave to hilltop - follow fence west over hill all ok 7-27-84 ss-dk

- OK 2-2-88 SS
- 1- NEW TIE, OK 3-4-94 - JG, SS
- OK 2-15-99 - JG-SS
- " 6-23-04 SS
- " 3-25-09 SS

TIE SKETCH

(Show at least four ties)

