

PUBLIC LAND SURVEY MONUMENT RECORD

TYPE OF MONUMENT: HARRISON
 ADAMS COUNTY COORDINATES, NAD 83 (2007)

N. 308699.655

E. 520244.436

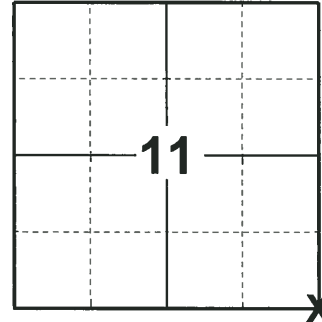
ELEVATION- DATUM

FIELD WORK DATE: 06/04/2018

BASIS FOR MONUMENT LOCATION

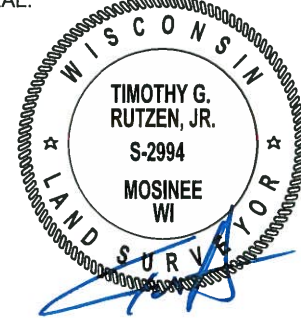
1984- PLS 742 PREVIOUSLY SET THIS MOUNMENT USING TRANSIT AND TAPE FROM CONTROL OF THE 2ND ORDER TAKEN FOR AERIAL PHOTOGRAPHY AROUND LAKE ARROWHEAD. THIS CONTROL WAS ALONG APACHE AVE AND CTH D. SINCE THAT TIME I HAVE HAD AN EDM AND THE ROADS ARE NOW IN AND I FOUND THIS CORNER SLIGHTLY OFF FROM THE SECTION SUMMARY OF 14-20-5 OF MAY, 1976. THEREFORE I MOVED THE HARRISON MONUMENT ABOUT 1 FOOT WEST TO FIT EVERYTHING BETTER. THERE APPEARS TO BE NO OTHER SURVEYS TIED TO THIS CORNER.

2018- PLS 2994 FOUND A HARRISON MONUMENT 2" BELOW THE GROUND SURFACE. FOUND NO EVIDENCE OF ANY OF THE TIES. ACCEPTED THE HARRISON MONUMENT AS THE BEST EVIDENCE OF THE CORNER LOCATION. SET 4 NEW TIES AND MEASURED TO TIES.



LOCATION
 (INDICATE CORNER BY "X")

SEAL:

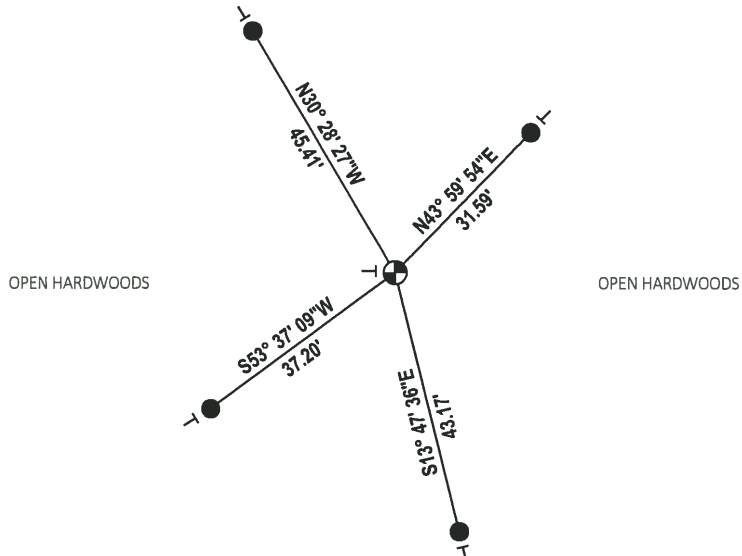


DATA SHOWN HERE ON THIS TIE SHEET IS CORRECT AND COMPLETE TO THE BEST OF MY KNOWLEDGE AND BELIEF.

PROFESSIONAL LAND SURVEYOR

DATE 7-18-18

TIE SKETCH



- SET 3/4" x 18" IRON REBAR, 1.50#/FT
- ⊕ FOUND HARRISON MONUMENT
- | VINYL "T" POST

ADAMS COUNTY

Survey Monument Record

Harrison

TYPE OF MONUMENT: _____

STATE PLANE COORDINATES: N _____

E _____

ELEVATION — M.S.L. DATUM: _____

THETA ANGLE: _____

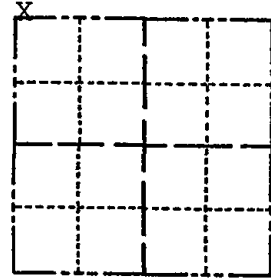
FIELD BOOK: _____ PAGE _____

CORNER NO. 51

SECTION 13

TOWN 20

RANGE 5



LOCATION
(Indicated by 'X')

SEAL:



BASIS FOR MONUMENT LOCATION

(Use reverse side if necessary)

Show info such as: History of corner, with reference to Vol. and pg, dates, surveyor; exact description of monument replaced; if location computed, by taped or EDM traverse; landowner remarks, etc.

I previously set this monument using transit and tape from control of the 2nd order taken for aerial photography around Lake Arrowhead. This control was along Apache Ave. and CTH D. Since that time I have had an EDM and the roads are now in and I found this corner slightly off from the section summary of 14-20-5 of May, 1976. Therefore I moved the harrison about 1 foot west to fit everything better. There appears to be no other surveys tied to this corner.

Below are the new ties.

- OK 1-18-89 SS
- 2 NEW TIES 3-4-94 JG-SS
- OK 2-19-09 SS

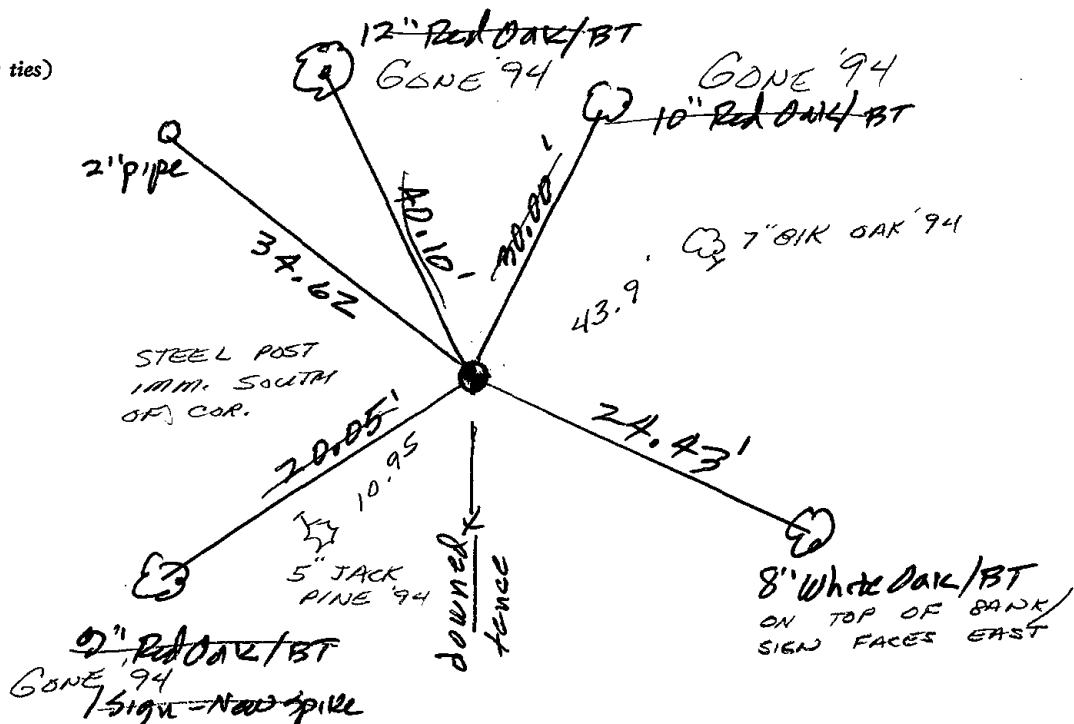
CERTIFIED CORRECT:

Kenneth G. Carlson
Registered Land Surveyor

DATE: Jan 15, 1984

TIE SKETCH

(Show at least four ties)



ADAMS COUNTY

Survey Monument Record

TYPE OF MONUMENT: Harrison

STATE PLANE COORDINATES: N _____

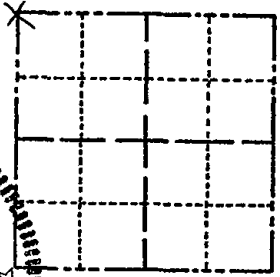
E _____

ELEVATION — M.S.L. DATUM: _____

THETA ANGLE: _____

FIELD BOOK: _____ PAGE _____

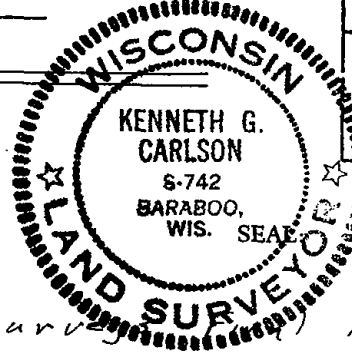
CORNER NO. 1001 (51)
 SECTION 13
 TOWN 20 N
 RANGE 5 E



BASIS FOR MONUMENT LOCATION

(Use reverse side if necessary)

Show info such as: History of corner, with reference to Vol. and pg. dates, surveyor; exact description of monument replaced; if location computed, by taped or EDM traverse; landowner remarks, etc.



LOCATION (Indicated by 'X')

Could find no previous survey location determined from monuments and fences coming from all four directions. There was a 2" IP 35.37' NW but from talking to Mr Leon Yeager (property owner), he had some one (?) from the chemical plant in NeKossa set that. This some one said it was within 20' one way or the other. I did find traces of an old fence to south

EDM and taped.

Loc. 350' ± of Dam

CERTIFIED CORRECT:

Kenneth G. Carlson
 Registered Land Surveyor

DATE: May 10, 1976

TIE SKETCH

(Show at least four ties)

