

PUBLIC LAND SURVEY MONUMENT RECORD

TYPE OF MONUMENT: HARRISON
 ADAMS COUNTY COORDINATES, NAD 83 (2007)

N. 313693.198

E. 514631.789

ELEVATION- DATUM

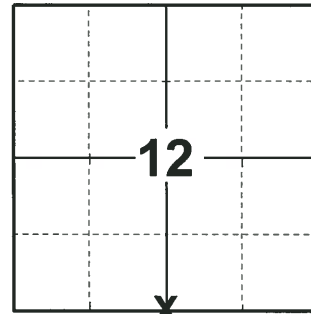
FIELD WORK DATE: 06/04/2018

BASIS FOR MONUMENT LOCATION

1976 - PLS 742 COULD FIND NO PREVIOUS SURVEY. SET CORNER N-S THE SAME DISTANCE AS THE WEST LINE OF THE NORTHWEST 1/4 - SOUTHEAST 1/4, SECTION 12 WHICH HAS A PIPE IN CTH D AND A GOOD FENCE TO THE EAST ALONG SOUTH LINE. CALCULATED THE CORNER USING THE ORIGINAL GOVERNMENT DISTANCE FROM THE NE CORNER WHICH IS THE OLD GOVERNMENT SURVEY POST FOUND BY KIEDROWSKI, EDM AND TAPED. SET HARRISON AND TIED OUT.

UNKNOWN - PLS 742 RE-SET CORNER AT PREVIOUS LOCATION. IT WAS REMOVED DURING CONSTRUCTION OF FOX RIDGE TRAIL. RE-SET HARRISON AND RE-TIED CORNER.

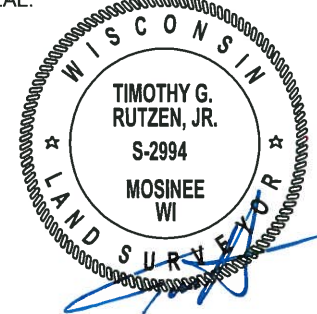
2018 - PLS 2994 FOUND A HARRISON MONUMENT FLUSH WITH THE GROUND SURFACE AND 1 TIE. THE MONUMENT AGREES WITH THE EXISTING TIE. ACCEPTED THE HARRISON MONUMENT AS THE CORNER LOCATION. SET 3 NEW TIES AND MEASURED TO THE TIES.



LOCATION

(INDICATE CORNER BY "X")

SEAL:



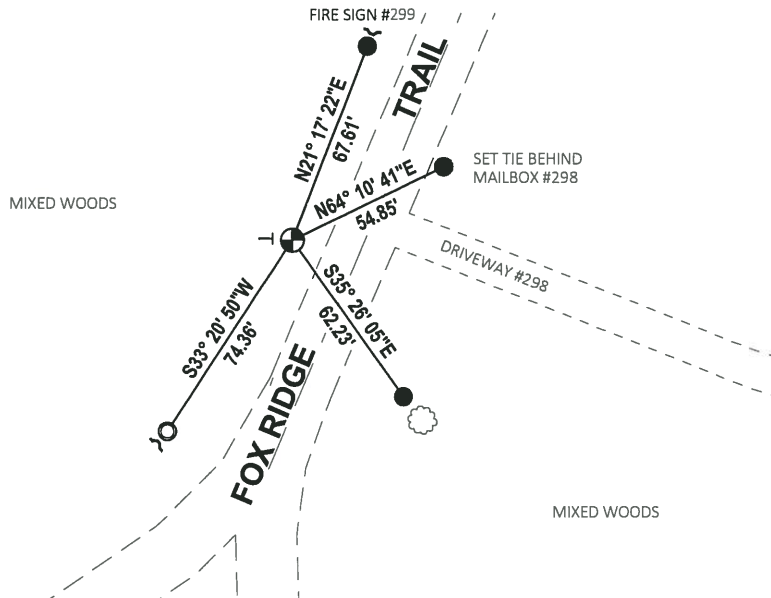
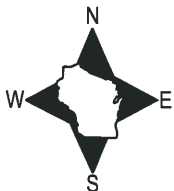
DATA SHOWN HERE ON THIS TIE SHEET IS CORRECT AND COMPLETE TO THE BEST OF MY KNOWLEDGE AND BELIEF.

PROFESSIONAL LAND SURVEYOR

DATE 7-18-18

TIE SKETCH

NOTE: CORNER FALLS 20'± WESTERLY OF THE CENTERLINE OF FOX RIDGE TRAIL.



- SET 3/4" x 18" IRON REBAR, 1.50#/FT
- FOUND 1-1/4" O.D. IRON PIPE
- ⊕ FOUND HARRISON MONUMENT
- ✓ STEEL FENCE POST
- ┊ VINYL "T" POST
- ⊗ 12" JACK PINE

ADAMS COUNTY

Survey Monument Record

TYPE OF MONUMENT: Std. Harrison

STATE PLANE COORDINATES: N _____

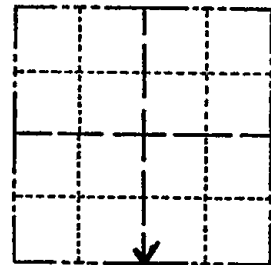
E _____

ELEVATION — M.S.L. DATUM: _____

THETA ANGLE: _____

FIELD BOOK: _____ PAGE _____

CORNER NO. 52
SECTION 12
TOWN 20
RANGE 5



LOCATION
(Indicated by 'X')

SEAL:

BASIS FOR MONUMENT LOCATION

(Use reverse side if necessary)

Show info such as: History of corner, with reference to Vol. and pg, dates, surveyor; exact description of monument replaced; if location computed, by taped or EDM traverse; landowner remarks, etc.

Reset corner at previous location. It was removed during construction of Fox Ridge Trail.



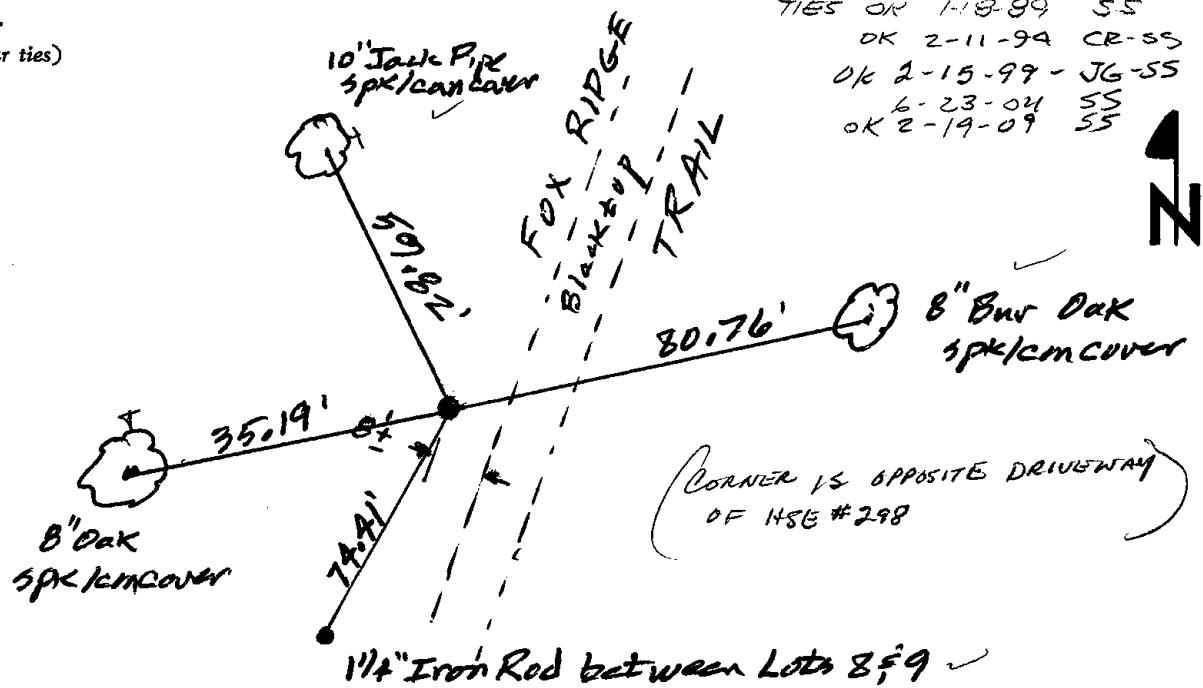
CERTIFIED CORRECT:

Kenneth G. Carlson
Registered Land Surveyor

DATE: _____

TIE SKETCH

(Show at least four ties)



ADAMS COUNTY

Survey Monument Record

TYPE OF MONUMENT: Harrison

STATE PLANE COORDINATES: N _____
E _____

ELEVATION — M.S.L. DATUM: _____

THETA ANGLE: _____

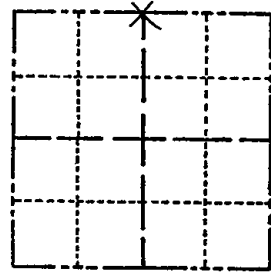
FIELD BOOK: _____ PAGE _____

CORNER NO. 1002

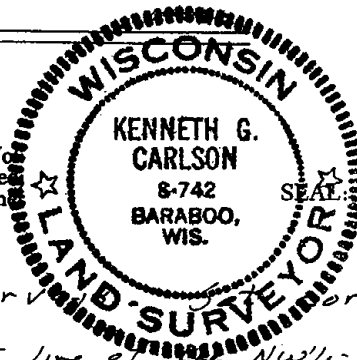
SECTION 13

TOWN 20 N

RANGE 5 E



LOCATION
(Indicated by 'X')



BASIS FOR MONUMENT LOCATION

(Use reverse side if necessary)

Show info such as: History of corner, with reference to V_o and pg, dates, surveyor; exact description of monument replaced; if location computed, by taped or EDM traverse; landowner remarks, etc.

Could find no previous survey corner N-5 the same distance as the west line of the NW 1/4 - SE 1/4, Section 12 which has a pipe in CTH "D" and a good fence to east along south line. Set corner E-W the original gov't distance from the NE corner which is the old gov't survey post found by Kiedrawski.

EDM and taped.

CERTIFIED CORRECT:

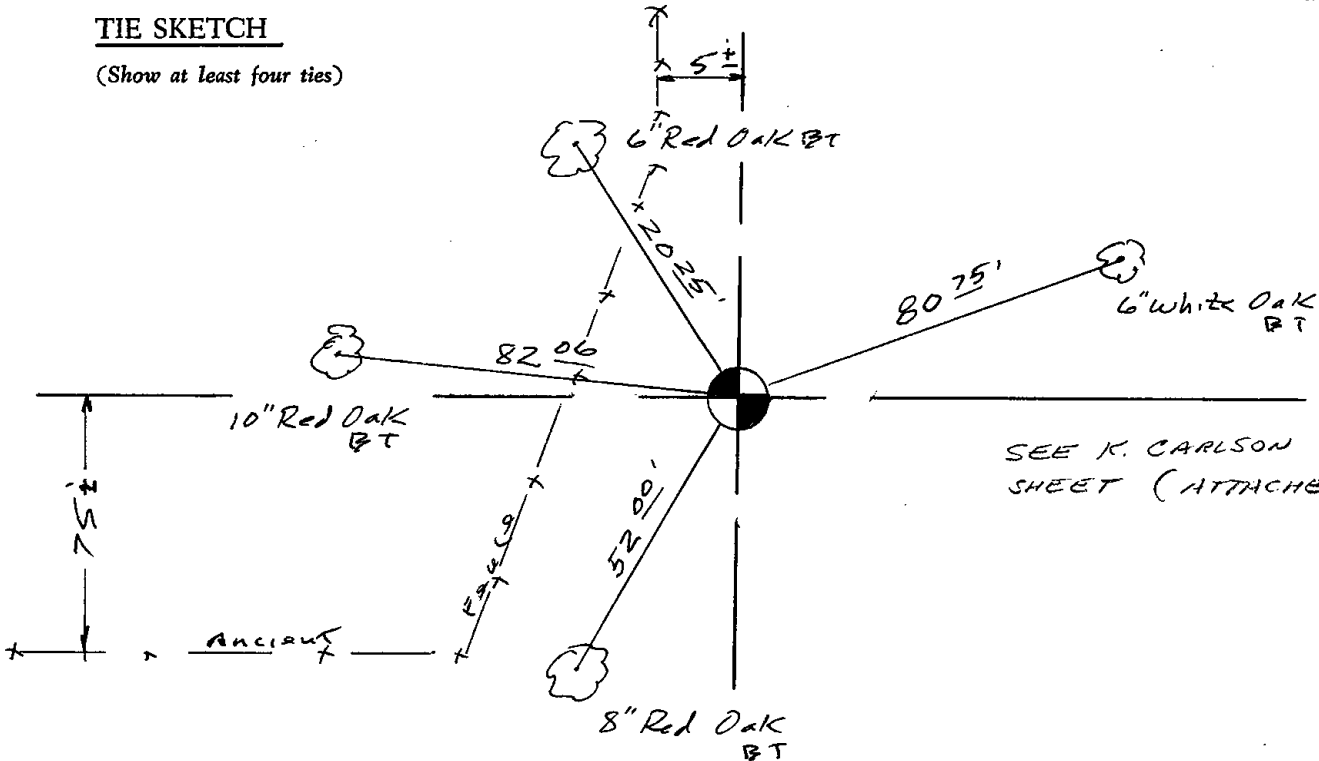
Kenneth G. Carlson
Registered Land Surveyor

DATE: May 10, 1976

F.C. Added 8/23/76 by ABK

TIE SKETCH

(Show at least four ties)



SEE K. CARLSON TIE SHEET (ATTACHED)