

PUBLIC LAND SURVEY MONUMENT RECORD

TYPE OF MONUMENT: HARRISON
 ADAMS COUNTY COORDINATES, NAD 83 (2007)

N. 306060.274

E. 520209.497

ELEVATION- - - DATUM - -

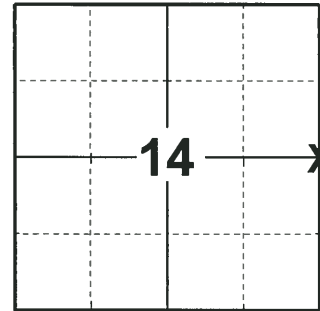
FIELD WORK DATE: 06/06/2018

BASIS FOR MONUMENT LOCATION

1976- PLS 742 COULD NOT FIND ANY PREVIOUS SURVEYS. CALCULATED CORNER BY ON EXTENSION OF NORTH LINE OF NW¹/₄ OF THE SE¹/₄ OF THE SECTION 14 PREVIOUSLY SURVEYED BY CARROLL AND SURROUNDED BY KINGSWOOD ADDITION TO ROYAL CREST. EDM AND TAPED. SET HARRISON AND TIED OUT CORNER.

1984- PLS 742 PREVIOUSLY SET THIS CORNER AND REVISITED LOCATION. FOUND CORNER TO BE SLIGHTLY OFF FROM THE SECTION SUMMARY OF 14-20-5 OF MAY, 1976. THEREFORE MOVED THE HARRISON ABOUT 0.4 SOUTHWEST TO FIT THE SECTION SUMMARY AND THE ORIGINAL CONTROL. THERE APPEARS TO BE NO OTHER SURVEYS TIED TO THIS CORNER. RE-MEASURED TO THE WITNESSES.

2018- PLS 2994 FOUND HARRISON MONUMENT FLUSH WITH THE GROUND AND DID NOT RECOVER ANY WITNESSES. ACCEPTED THE HARRISON AS BEST EVIDENCE OF AS THE CORNER. SET 4 NEW TIES AND MEASURED TO TIES.



LOCATION

(INDICATE CORNER BY "X")

SEAL:



DATA SHOWN HERE ON THIS TIE SHEET IS CORRECT AND COMPLETE TO THE BEST OF MY KNOWLEDGE AND BELIEF.

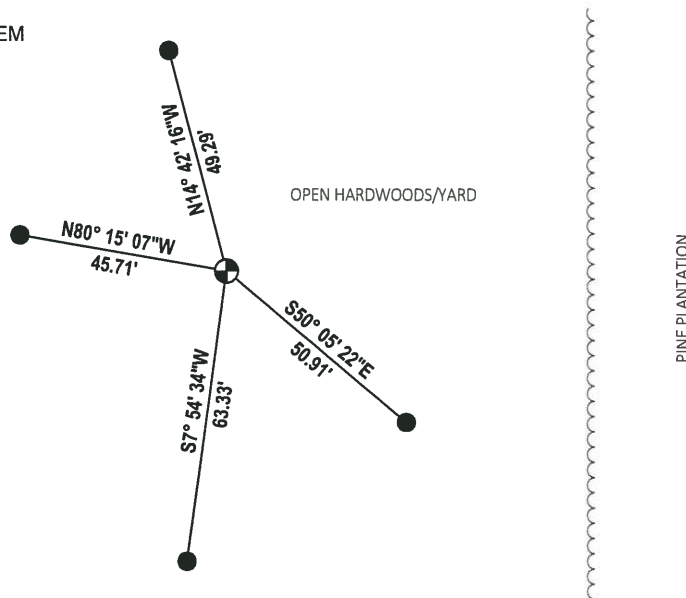
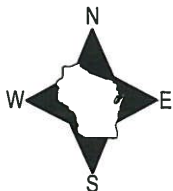
PROFESSIONAL LAND SURVEYOR

DATE 7-18-18

TIE SKETCH

NOTE: ALL TIES ARE SET 2'± IN FRONT OF TREES, CORNER FALLS 300'± FROM THE CENTERLINE OF 15TH AVE.

NOTE: POSTS WERE SET AT TIES DUE TO THEM FALLING NEAR A YARD.

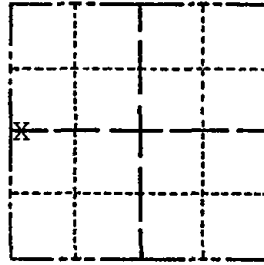


- SET 3/4" x 18" IRON REBAR, 1.50#/FT
- ⊕ FOUND HARRISON MONUMENT

ADAMS COUNTY
Survey Monument Record

CORNER NO. 59
 SECTION 13
 TOWN 20
 RANGE 5

TYPE OF MONUMENT: Harrison
 STATE PLANE COORDINATES: N _____
 E _____
 ELEVATION — M.S.L. DATUM: _____
 THETA ANGLE: _____
 FIELD BOOK: _____ PAGE _____



LOCATION
 (Indicated by 'X')

BASIS FOR MONUMENT LOCATION

(Use reverse side if necessary)

Show info such as: History of corner, with reference to Vol. and pg, dates, surveyor; exact description of monument replaced; if location computed, by taped or EDM traverse; landowner remarks, etc.

SEAL:



I previously set this monument using transit and tape from control of the 2nd order taken for aerial photography around Lake Arrowhead. This control was along Apache Ave. and CTH D. Since that time I have an EDM and the roads are now in and I found this corner to be slightly off from the section summary of 14-20-5 of May, 1976. Therefore I moved the harrison about 0.4 southwest to fit the section summary and the original control. There appears to be no other surveys tied to this corner.

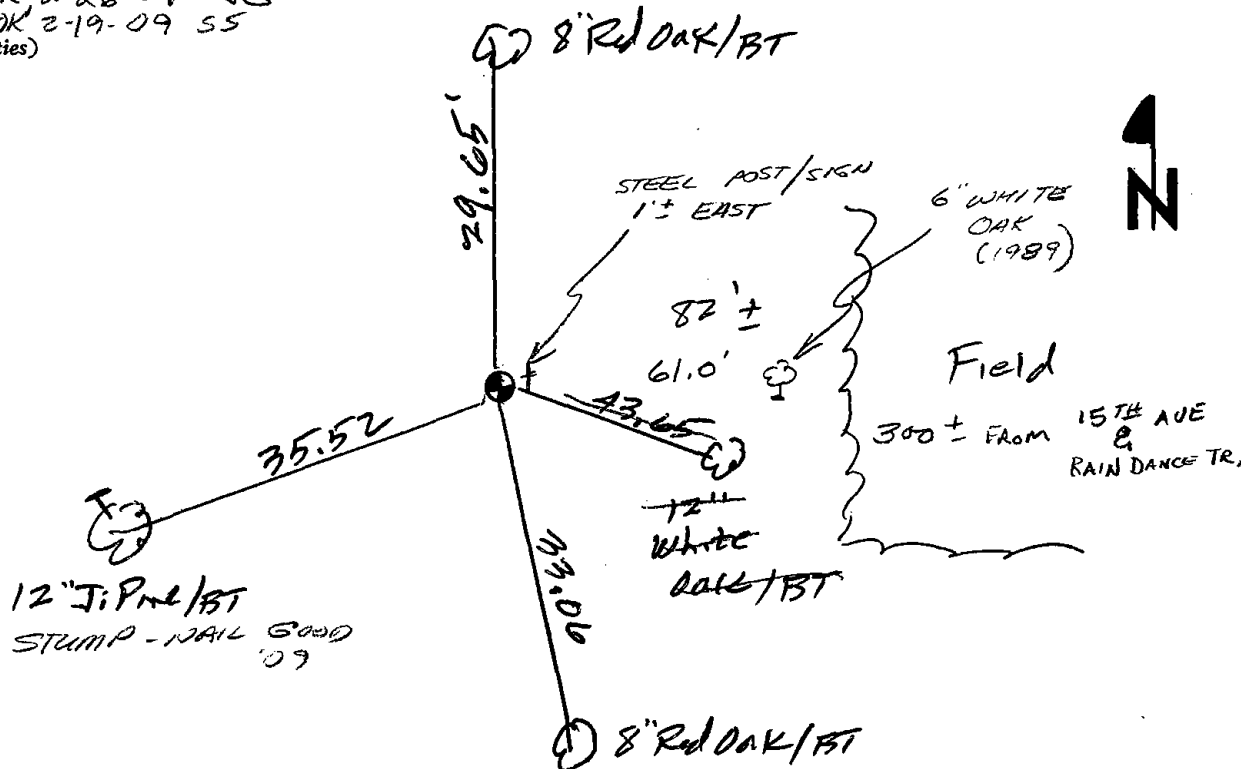
Below are the new ties.

1 NEW TIE 1-19-99 SS
 DK 2-15-99 - JG-SS

CERTIFIED CORRECT:

Kenneth G. Carlson
 Registered Land Surveyor
 DATE: Jan 15, 1999

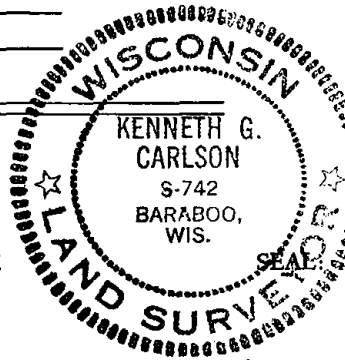
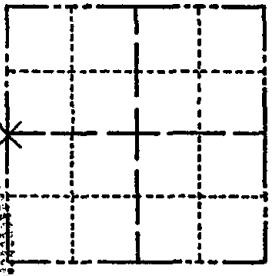
TIE SKETCH DK 2-26-04 - JG
 OK 2-19-09 SS
 (Show at least four ties)



ADAMS COUNTY
Survey Monument Record

CORNER NO. 1003
SECTION 13
TOWN 20 N
RANGE 5 E

TYPE OF MONUMENT: Harrison
STATE PLANE COORDINATES: N _____
E _____
ELEVATION — M.S.L. DATUM: _____
THETA ANGLE: _____
FIELD BOOK: _____ PAGE _____



LOCATION
(Indicated by 'X')

BASIS FOR MONUMENT LOCATION

(Use reverse side if necessary)

Show info such as: History of corner, with reference to Vol. and pg, dates, surveyor; exact description of monument replaced; if location computed, by taped or EDM traverse; landowner remarks, etc.

Could find no previous surveys. Set corner on extension of north line of NW 1/4 - SE 1/4 section 14 previously surveyed by Carroll and surrounded by Kingswood Add. to Royal Crest.

EDM and taped.

OK 5-29-79 PK-SS
OK 2-11-94 CR-SS

CERTIFIED CORRECT:

Kenneth G. Carlson
Registered Land Surveyor

DATE: May 10, 1976

TIE SKETCH

(Show at least four ties)

SEE KEN CARLSON SHEET TIE 1-15-94

