

## PUBLIC LAND SURVEY MONUMENT RECORD

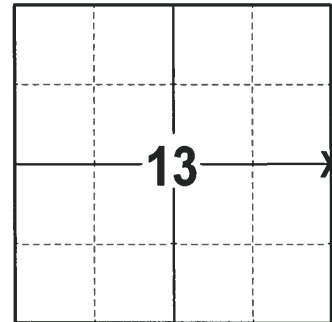
TYPE OF MONUMENT: 1-1/4" IRON ROD  
 ADAMS COUNTY COORDINATES, NAD 83 (2007)

N. 306026.748

E. 525529.448

ELEVATION-      DATUM     

FIELD WORK DATE: 02/14/2018



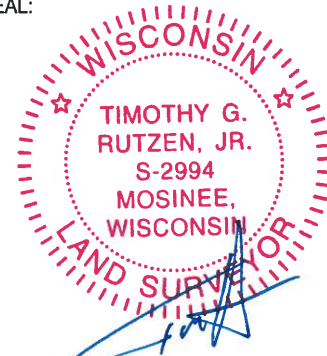
### BASIS FOR MONUMENT LOCATION

1983 - PLS 742 STATES THE CORNER FELL IN AN OLD CUT OF THE ROAD. SET A HARRISON MONUMENT ON LINE AND EQUIDISTANT BETWEEN THE SE AND NE CORNERS OF SECTION 13 WHICH ALSO HAVE HARRISONS. SEE PREVIOUSLY SUBMITTED SECTION SUMMARIES.

2018 - PLS 2994 FOUND 1-1/4" IRON ROD 18"± UNDER RIPRAP AND 1 TIE. THE IRON ROD AGREES WITH THE TIE. AND WAS VERIFIED TO BE ON A STRAIGHT LINE AND NEAR EQUIDISTANT BETWEEN THE NE AND SE CORNERS OF SECTION 13. ACCEPTED THE 1-1/4" IRON ROD AS THE CORNER. SET 1 NEW TIE AND MEASURED TO ALL TIES AND NE AND SE CORNERS OF SECTION 13.

**LOCATION**  
 (INDICATE CORNER BY "X")

SEAL:



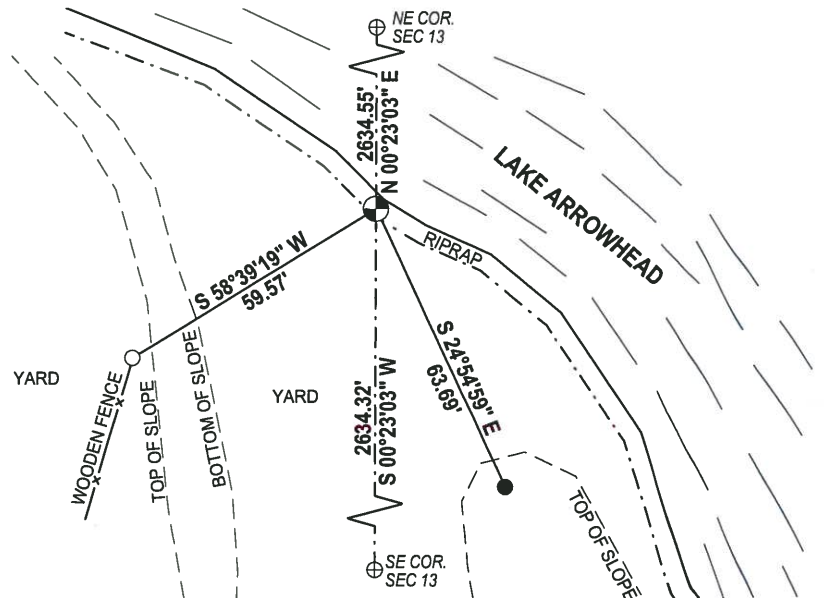
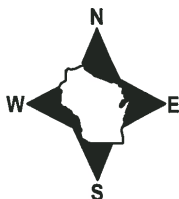
DATA SHOWN HERE ON THIS TIE SHEET IS CORRECT AND COMPLETE TO THE BEST OF MY KNOWLEDGE AND BELIEF.

PROFESSIONAL LAND SURVEYOR

DATE 3-1-18

### - TIE SKETCH

NOTE: THE CORNER FALLS 3"± SOUTHERLY OF THE WATERS EDGE OF LAKE ARROWHEAD AND IS BURIED UNDER 18"± OF RIPRAP.



- 3/4" x 18" IRON REBAR SET, 1.50#/FT
- 3/4" IRON ROD FOUND
- ⊕ HARRISON FOUND
- ⊙ 1-1/4" IRON ROD FOUND

ADAMS COUNTY

Survey Monument Record

TYPE OF MONUMENT: Std. Harrison

STATE PLANE COORDINATES: N \_\_\_\_\_

E \_\_\_\_\_

ELEVATION — M.S.L. DATUM: \_\_\_\_\_

THETA ANGLE: \_\_\_\_\_

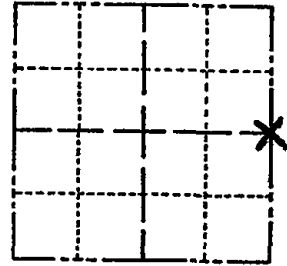
FIELD BOOK: \_\_\_\_\_ PAGE \_\_\_\_\_

CORNER NO. 60

SECTION 13

TOWN 20

RANGE 5



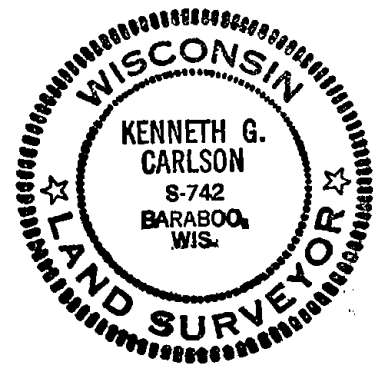
LOCATION  
(Indicated by 'X')

SEAL:

BASIS FOR MONUMENT LOCATION

(Use reverse side if necessary)

Show info such as: History of corner, with reference to Vol. and pg, dates, surveyor; exact description of monument replaced; if location computed, by taped or EDM traverse; landowner remarks, etc.



CERTIFIED CORRECT:

*Kenneth G. Carlson*  
Registered Land Surveyor

DATE: June 15, 1983

Corner is in old cut of road.

Set harrison on line and equidistant between SE and NE corners which have harrisons.

See previously submitted section summaries.

filed for record this 20th  
day of July 1983  
per 59.60 Wisconsin Statutes.  
*J. Christman*  
ADAMS COUNTY SURVEYOR

Ok 4-24-84 DK-SS

OK 3-4-91 - JG-SS

TIE SKETCH

OK 12-29-98 - JG

(Show at least four ties)

