

PUBLIC LAND SURVEY MONUMENT RECORD

TYPE OF MONUMENT: HARRISON (BROKEN-TOP)
 ADAMS COUNTY COORDINATES, NAD 83 (2007)

N. 303415.497

E. 512288.200

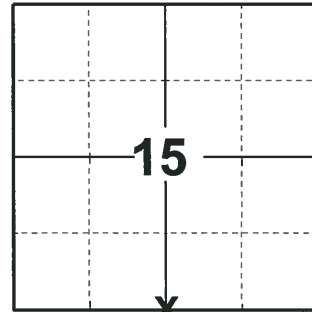
ELEVATION- DATUM

FIELD WORK DATE: 06/05/2018

BASIS FOR MONUMENT LOCATION

1976- PLS 1103 RAN EDM/TRANSIT TRAVERSE AROUND SECTION 15 TO DETERMINE SEARCH AREAS. INVESTIGATION YIELDED ONLY REMAINS OF LOWER PORTION OF WHAT APPEARED TO BE A RAILROAD OR SPIKE AT THE INTERSECTION OF APACHE AVENUE AND COUNTY TRUNK Z. DID NOT EXCAVATE WITH BACKHOE DUE TO THE ENTIRE AREA BEING FILL OVER BACKWATERS OF THE WISCONSIN RIVER. REPLACED RAILROAD SPIKE WITH HARRISON MONUMENT AND TIED OUT.

2018- PLS 2449 FOUND A HARRISON MONUMENT WITH A BROKEN-TOP 12" BELOW THE ROAD SURFACE AND 1 TIE. THE MONUMENT AGREES WITH THE EXISTING TIE. ACCEPTED THE HARRISON MONUMENT WITH A BROKEN-TOP AS THE CORNER LOCATION. SET 4 NEW TIES AND MEASURED TO THE TIES.



LOCATION
 (INDICATE CORNER BY "X")

SEAL:

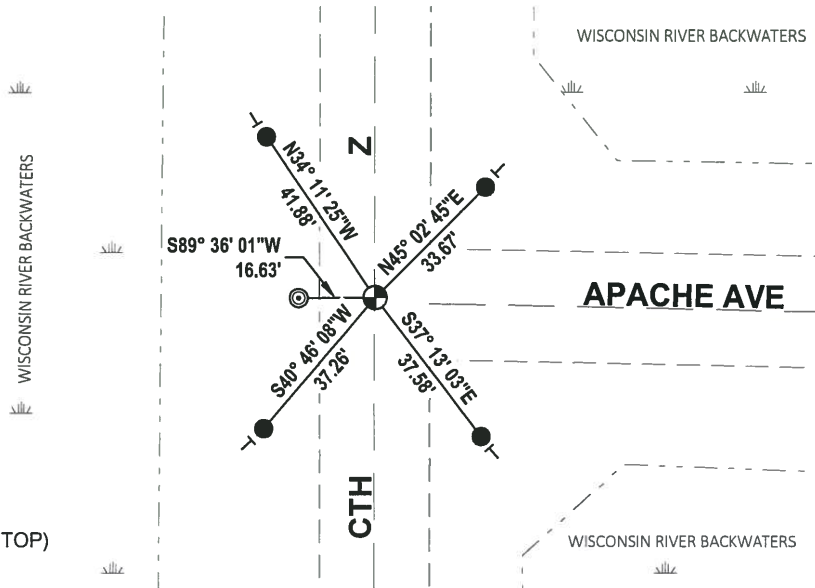
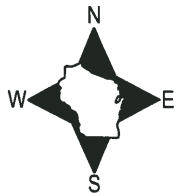


DATA SHOWN HERE ON THIS TIE SHEET IS CORRECT AND COMPLETE TO THE BEST OF MY KNOWLEDGE AND BELIEF.

PROFESSIONAL LAND SURVEYOR

DATE 7-18-18

- TIE SKETCH



- SET 3/4" x 18" IRON REBAR, 1.50#/FT
- ⊙ FOUND 3/4" IRON ROD
- ⊙ FOUND HARRISON MONUMENT (BROKEN-TOP)
- VINYL "T" POST

ADAMS COUNTY

Survey Monument Record

TYPE OF MONUMENT: Harrison

STATE PLANE COORDINATES: N _____

E _____

ELEVATION — M.S.L. DATUM: _____

THETA ANGLE: _____

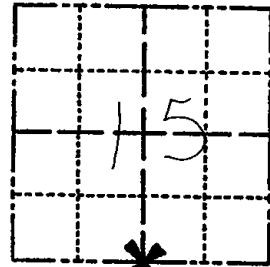
FIELD BOOK: 37 PAGE 25

CORNER NO. 1027

SECTION 15

TOWN 20

RANGE 5



LOCATION
(Indicated by 'X')

SEAL:



BASIS FOR MONUMENT LOCATION

(Use reverse side if necessary)

Show info such as: History of corner, with reference to Vol. and pg, dates, surveyor; exact description of monument replaced; if location computed, by taped or EDM traverse; landowner remarks, etc.

Ran EDM/transit traverse around Section 15 to determine search areas.

Investigation yielded only remains of lower portion of what appeared to be a railroad spike at the intersection of Apache Avenue and County Trunk Z.

Did not excavate with backhoe because entire area is fill over backwaters of the Wisconsin River.

Replaced railroad Spike with Harrison Monument.

Set 3-26-1976

OK 2-11-94 CR-SS

OK 5-29-79 PK-SS

OK-4-25-84 DK-SS ADD 3 NEW TIES 2-2-87 SS

CERTIFIED CORRECT:

Dale C. Hagen
Registered Land Surveyor

DATE: 6-1-1976

TIE SKETCH

PK SET AT MON LOC. 12-29-98 JG
2-GONE, 2-NEW, 2-26-04-56

(Show at least four ties) MON. OK 2-25-09 SS

NOTE:

Tie in power pole to nail in disc.

