

PUBLIC LAND SURVEY MONUMENT RECORD

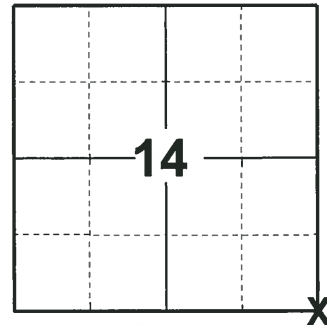
TYPE OF MONUMENT: HARRISON (BROKEN-TOP)
 ADAMS COUNTY COORDINATES, NAD 83 (2007)

N. 303378.548

E. 520209.884

ELEVATION- _____ DATUM _____

FIELD WORK DATE: 06/06/2018



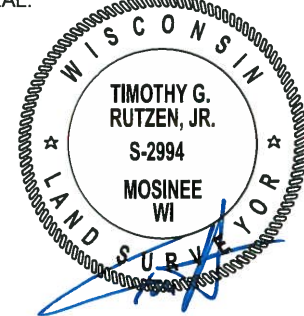
LOCATION
 (INDICATE CORNER BY "X")

BASIS FOR MONUMENT LOCATION

1976- PLS 878 FOUND PIPE SET BY W.C. ROHDE IN A SURVEY OF A FORTY IN SECTION 14. PIPE IDENTIFIED BY PLUG MARKED S-0841. REPLACED 1" IRON PIPE WITH HARRISON MONUMENT AND TIED OUT.

2018- PLS 2449 FOUND A HARRISON MONUMENT WITH A BROKEN-TOP 12" BELOW THE ROAD SURFACE AND 2 TIES. THE MONUMENT AGREES WITH THE EXISTING TIES. ACCEPTED THE HARRISON MONUMENT WITH A BROKEN-TOP AS THE CORNER LOCATION. SET 3 NEW TIES AND MEASURED TO THE TIES.

SEAL:



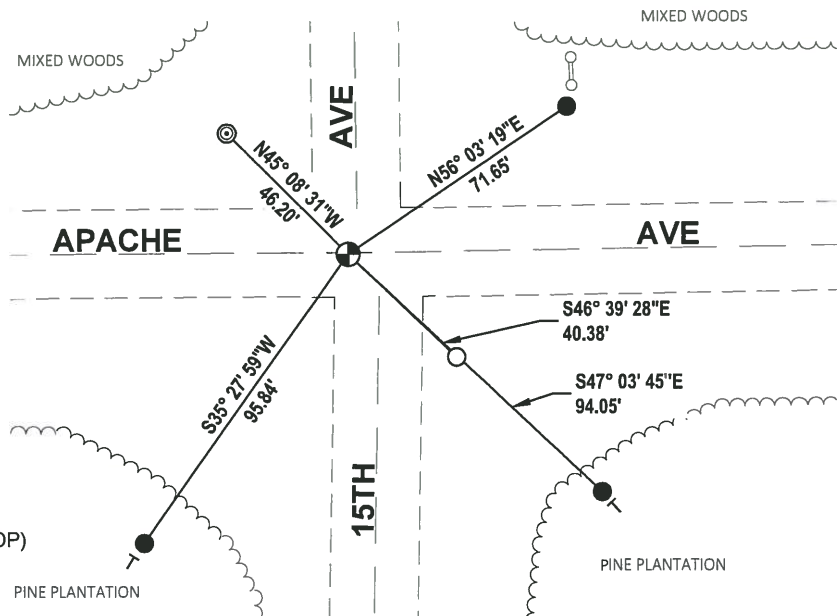
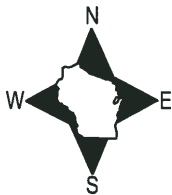
DATA SHOWN HERE ON THIS TIE SHEET IS CORRECT AND COMPLETE TO THE BEST OF MY KNOWLEDGE AND BELIEF.

PROFESSIONAL LAND SURVEYOR

DATE 7-18-18

TIE SKETCH

NOTE: CORNER FALLS 2± SOUTH OF THE CENTERLINE OF APACHE AVE AND 5± WEST OF THE CENTERLINE OF 15TH AVE.



- SET 3/4" x 18" IRON REBAR, 1.50#/FT
- FOUND 3/4" IRON ROD
- ⊙ FOUND 2-3/8" O.D. IRON PIPE
- ⊕ FOUND HARRISON MONUMENT (BROKEN-TOP)
- └ VINYL "T" POST
- LAKE ARROWHEAD INFO SIGN

ADAMS COUNTY

Survey Monument Record

TYPE OF MONUMENT: Harrison standard

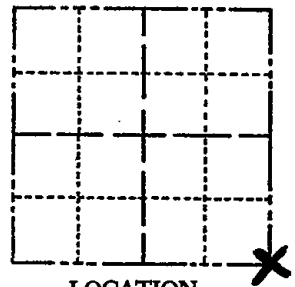
STATE PLANE COORDINATES: N _____
E _____

ELEVATION — M.S.L. DATUM: _____

THETA ANGLE: _____

FIELD BOOK: _____ PAGE _____

CORNER NO. 71
SECTION 14
TOWN 20
RANGE 5



LOCATION
(Indicated by 'X')

SEAL:



BASIS FOR MONUMENT LOCATION

(Use reverse side if necessary)

Show info such as: History of corner, with reference to Vol. and pg. dates, surveyor; exact description of monument replaced; if location computed, by taped or EDM traverse; landowner remarks, etc.

Replaced a 1" iron pipe with Harrison.
Pipe set by W.C.Rohde in a survey of a forty in Sec. 14. Pipe identified by plug marked S-0841.

OK 5-29-79 PK-55

see Reverse side!

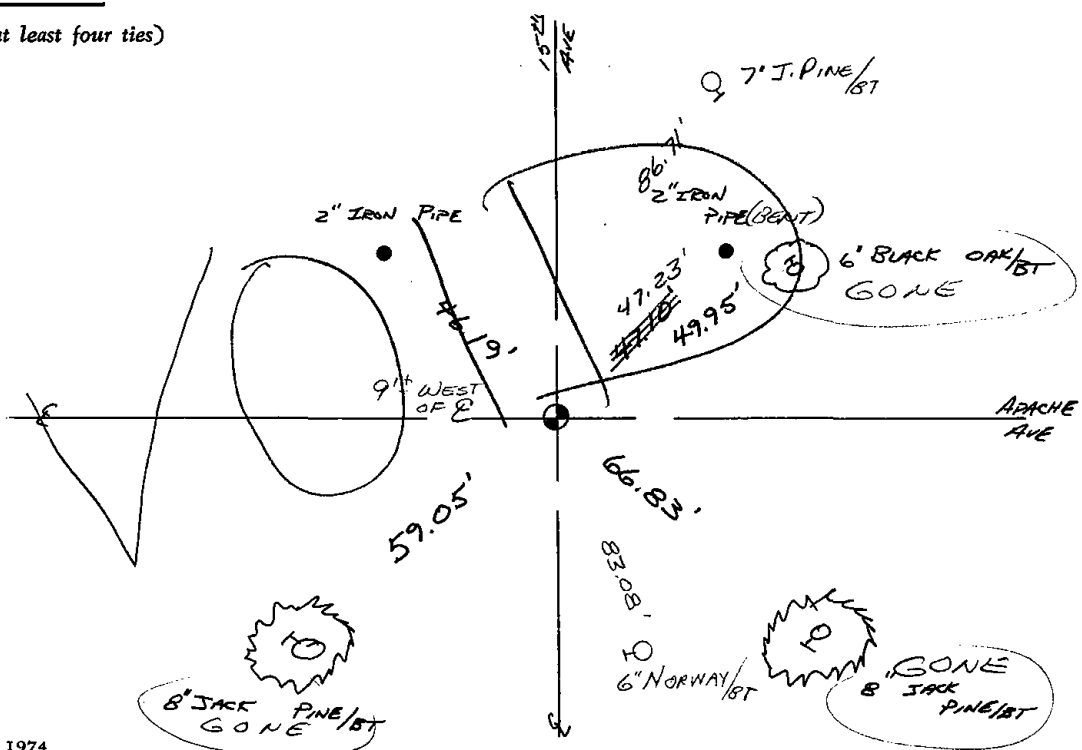
CERTIFIED CORRECT:

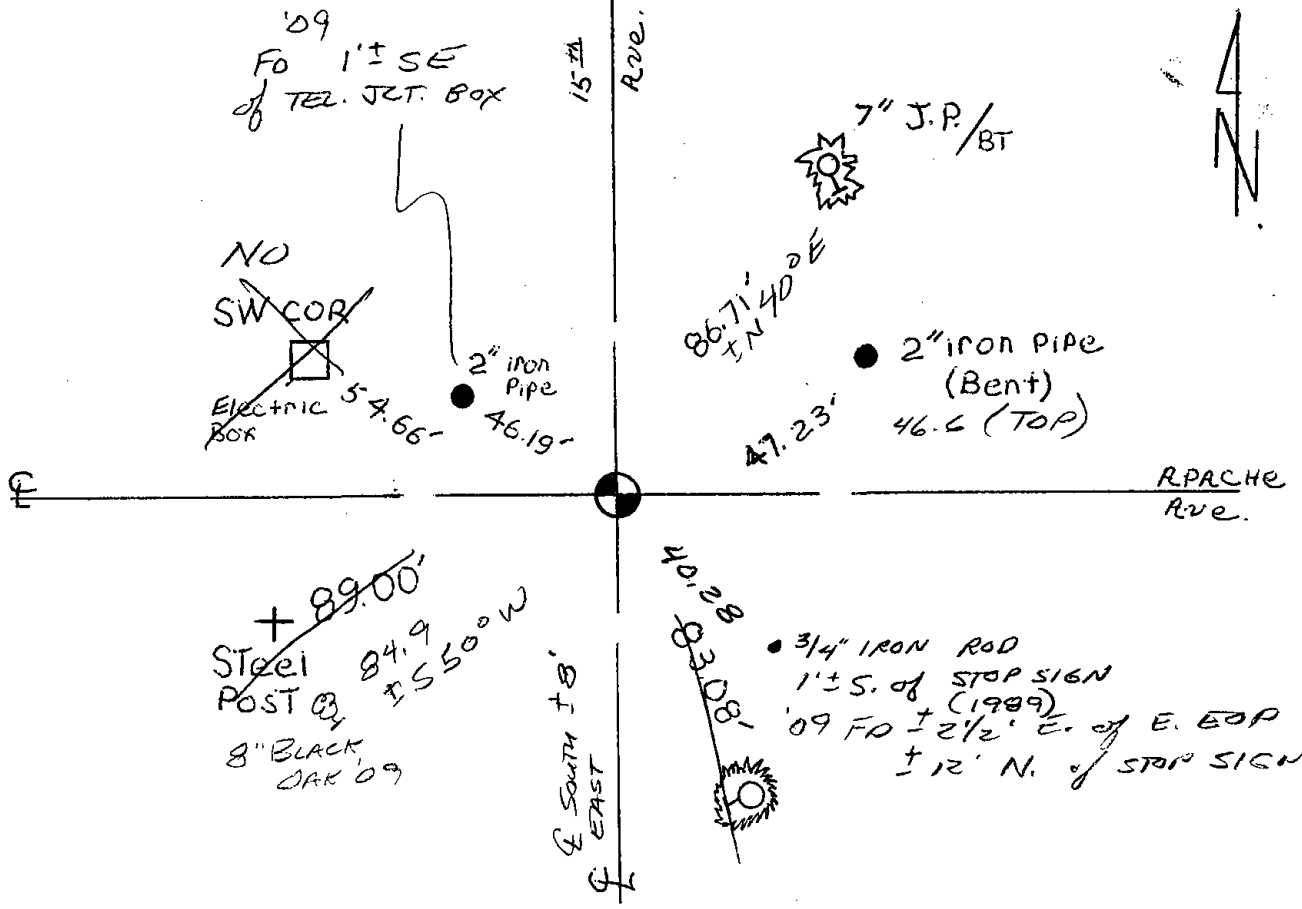
Anthony B. Kiedrowski
Registered Land Surveyor

DATE: July, 1976

TIE SKETCH

(Show at least four ties)





Monument is approximately 9 feet west of the center line of 15th Ave.

Updated 4-25-84 DK-SS

1 NEW TIE 6-12-89 MK-SS

OK 2-11-94 SS-CR

OK 12-29-98-JG

OK, 2-26-04-JG

9-26-09 SS- SET MAG FROM EXIST. TIES - 1 NEW TIE