

U.S. PUBLIC LAND SURVEY MONUMENT RECORD

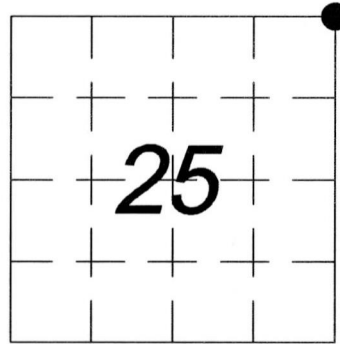
INSTRUCTIONS: This record shall show the location of the corner and shall include all of the following nine elements (a through i).

(a) Identify the corner by reference to the U.S. Public Land Survey System.

● = Corner monument restored.

24	19
25	30

NORTHEAST CORNER OF SECTION 25,
TOWNSHIP 20 NORTH, RANGE 05 EAST,
TOWN OF ROME, ADAMS COUNTY, WISCONSIN



BEARINGS ARE REFERENCED TO THE WISCONSIN COUNTY COORDINATE SYSTEM, ADAMS COUNTY, WISCONSIN

(b) Describe any record evidence, monument evidence, occupational evidence, testimonial evidence, or any other material evidence you considered, and whether the monument was found or placed.


I found a Harrison Monument with the top broken off 1± below grade of a sand/dirt road per tie sheet by Dale C. Hagen, dated, 2-1-75. I found the 3/4" Rod northeasterly of the Harrison Monument and also found a 3/4" Rod southeasterly of said Monument. I accepted the Harrison Monument (see picture), tied into the 3/4" Rods and placed two (2) ties all as referenced below. Date of field survey & monument recovery was September 02, 2015. Elevations provided on section corners are based upon the NAVD88 Datum.

(c) In the plan view drawing below, provide reference ties to at least 4 witness monuments. (Witness monuments shall be made of concrete, natural stone, iron, or other equally durable material.) Describe witness monuments.

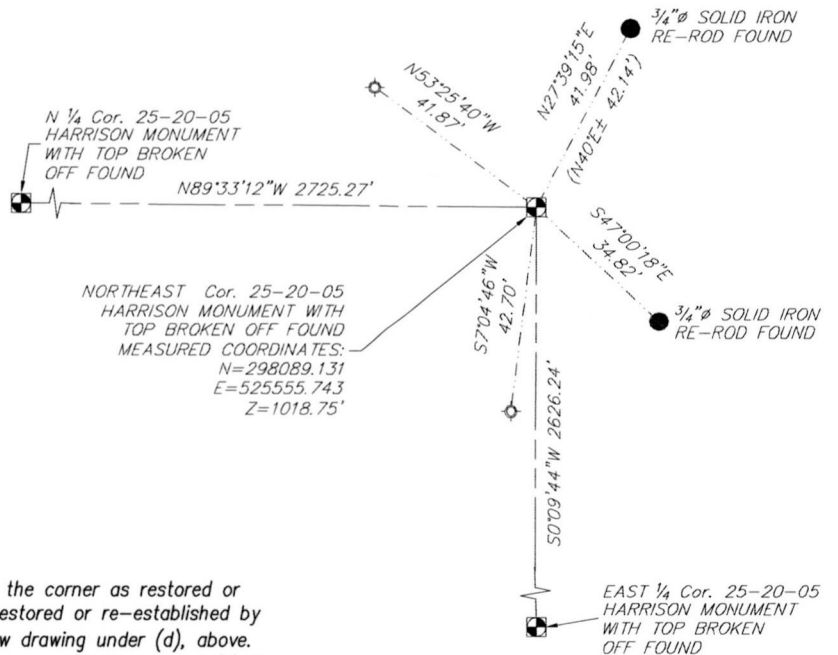
(d) Show a plan view drawing depicting the relevant monuments and reference ties which is sufficient in detail to enable accurate relocation of the corner monument if the corner monument is disturbed. Indicate North.

SECTION CORNER MONUMENT FOUND



LEGEND
 SET 3/4"Ø x 18" SOLID IRON RE-ROD, MIN. WT. 1.50 lbs./ft.

SCALE: 1"=40'



(e) Describe any material discrepancy between the location of the corner as restored or re-established and the location of that corner as previously restored or re-established by distance and direction. Show the discrepancy on the plan view drawing under (d), above. Show the distances between the corner as previously restored or re-established and (1) the corner as restored or re-established, and (2) to at least 2 of the 4 witness monuments shown on the drawing in (d), above.

No known discrepancy.

(f) Was the corner restored through acceptance of (1) an obliterated evidence location, or, (2) a found perpetuated location?

Found perpetuated location.

(g&h) Was the corner re-established through lost corner proportionate methods? If so, show the method, including the directions and distances to other public land survey corners used as evidence or used for proportioning in determining the corner location.

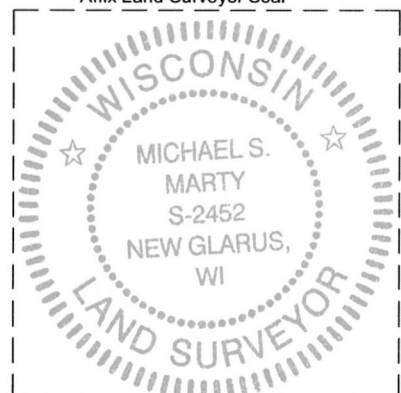
Found perpetuated location.

(i) I, Michael S. Marty, Professional Land Surveyor No. 2452, hereby certify that the corner location shown on this record was determined by me or under my direction and control and that this U.S. Public Land Survey Monument Record is correct and complete to the best of my knowledge and belief.

Michael S. Marty
 By: Vierbicher Associates, Inc.
 Michael S. Marty, P.L.S. No. 2452

9/22/2015
 Date

Affix Land Surveyor Seal



vierbicher
 planners | engineers | advisors



FN: 150044
 DATE: 09/22/2015
 Drafted By: MMAR
 Checked By: MZIE

REEDSBURG - MADISON - PRAIRIE DU CHIEN
 999 Fourier Drive, Suite 201 Madison, Wisconsin 53717
 Phone: (608) 826-0532 Fax: (608) 826-0530