

PUBLIC LAND SURVEY MONUMENT RECORD

TYPE OF MONUMENT: HARRISON
 ADAMS COUNTY COORDINATES, NAD 83 (2007)

N. 298100.389

E. 512274.814

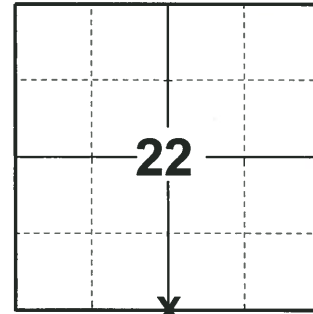
ELEVATION- _____ DATUM _____

FIELD WORK DATE: 06/07/2018

BASIS FOR MONUMENT LOCATION

1980- PLS 742 CORNER PREVIOUSLY SET BY SMITH IN 1912 BUT IS NOW GONE. THE CORNER POSITION WAS ESTABLISHED BY PRORATION OF SMITH'S MEASUREMENTS FROM THE HARRISON AT THE SOUTHEAST CORNER TO A POINT 33' NORTH AND 33' WEST OF A CONCRETE MONUMENT FOUND AT CTH Z & ARCHER AVE. PAUL CARROLL APPEARED TO DO THE SAME THING IN CSM PG. 103 ALTHOUGH HE DID NOT SET THE 1/4 CORNER. EDM TRAVERSE FOR SETTING CORNER. SET HARRISON AND TIED OUT.

2018- PLS 2994 FOUND A HARRISON MONUMENT 12" BELOW THE GROUND SURFACE, 1 TIE, 1 WITNESS AND 1 PROPERTY IRON. THE MONUMENT AGREES WITH THE EXISTING TIE AND WITNESS. ACCEPTED THE HARRISON MONUMENT AS THE CORNER LOCATION. SET 2 NEW TIES AND MEASURED TO THE TIES, WITNESS AND PROPERTY IRON.



LOCATION

(INDICATE CORNER BY "X")

SEAL:



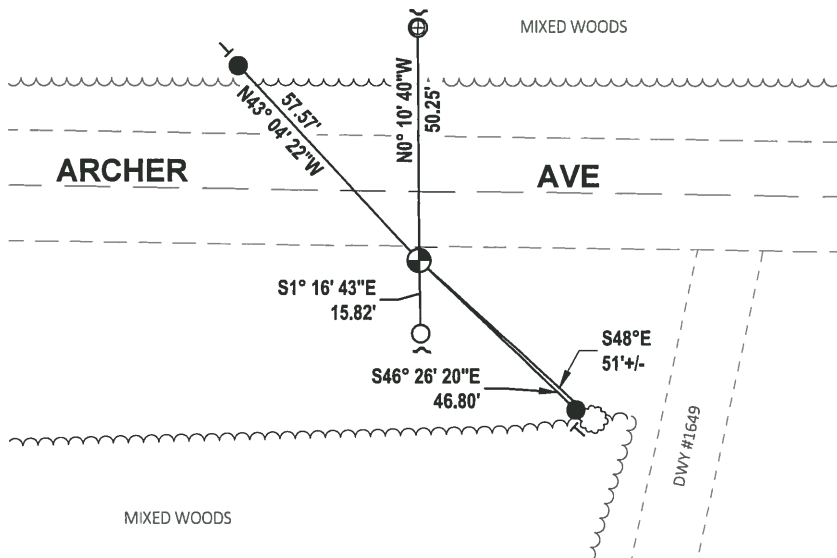
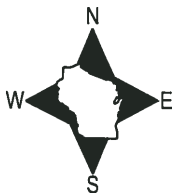
DATA SHOWN HERE ON THIS TIE SHEET IS CORRECT AND COMPLETE TO THE BEST OF MY KNOWLEDGE AND BELIEF.

PROFESSIONAL LAND SURVEYOR

DATE 7-18-18

TIE SKETCH

NOTE: THE CORNER FALLS 16'± SOUTH OF THE CENTERLINE OF ARCHER AVE.



- SET 3/4" x 18" IRON REBAR, 1.50#/FT
- FOUND 3/4" IRON ROD
- ⊕ FOUND 1" IRON ROD
- ⊙ FOUND HARRISON MONUMENT
- ┘ STEEL FENCE POST
- └ VINYL "T" POST
- ⊗ WITNESS TREE

ADAMS COUNTY

Survey Monument Record

TYPE OF MONUMENT: Std. Harrison

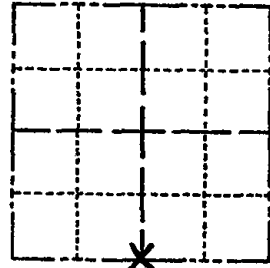
STATE PLANE COORDINATES: N _____
E _____

ELEVATION — M.S.L. DATUM: _____

THETA ANGLE: _____

FIELD BOOK: _____ PAGE _____

CORNER NO. 88
SECTION 22
TOWN 20
RANGE 5



LOCATION
(Indicated by 'X')

SEAL:



BASIS FOR MONUMENT LOCATION

(Use reverse side if necessary)

Show info such as: History of corner, with reference to Vol. and pg, dates, surveyor; exact description of monument replaced; if location computed, by taped or EDM traverse; landowner remarks, etc.

This corner set by Smith in 1912 but now gone. The Harrison was set by proration of Smith's measurements from the Harrison at the SE corner to a point 33' north & 33' west of a concrete monument found at CTH Z & Archer Ave. Paul Carroll appeared to do the same thing in CSM p. 103 although he did not set the 1/4 corner. EDM traverse for setting corner. See section summary dated today.

- OK 4-25-84 SS-DK
- 1 NEW TIE 2-2-89 SS
- OK 2-11-94 CR-SS
- OK 12-29-98-JG
- 1 GONE 1-29-04 JG-DA
- MON. 1'10" DEEP - ADD 1 TIE 3-25-09 SS

CERTIFIED CORRECT:

Kenneth G. Carlson
Registered Land Surveyor

DATE: Oct 13, 1980

TIE SKETCH

(Show at least four ties)

