

PUBLIC LAND SURVEY MONUMENT RECORD

TYPE OF MONUMENT: HARRISON
 ADAMS COUNTY COORDINATES, NAD 83 (2007)

N. 298117.389

E. 514949.605

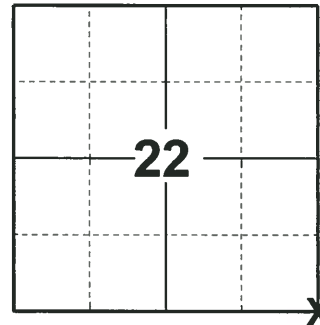
ELEVATION- _____ DATUM _____

FIELD WORK DATE: 06/07/2018

BASIS FOR MONUMENT LOCATION

1974- PLS 878 MONUMENTED POINT USED BY PAUL CARROLL, RLS, AS SHOWN IN CERTIFIED SURVEY IN THE NORTH EAST CORNER OF SECTION. RE-PLACED MONUMENTED POINT THE SAME WITH A HARRISON AND TIED OUT.

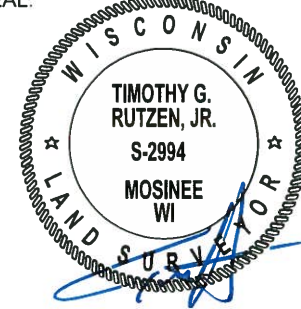
2018- PLS 2994 FOUND A HARRISON MONUMENT 12" BELOW ROAD SURFACE AND 2 TIES. THE MONUMENT AGREES WITH THE EXISTING TIES. ACCEPTED HARRISON MONUMENT AS THE CORNER LOCATION. SET 2 NEW TIES AND MEASURED TO THE TIES.



LOCATION

(INDICATE CORNER BY "X")

SEAL:



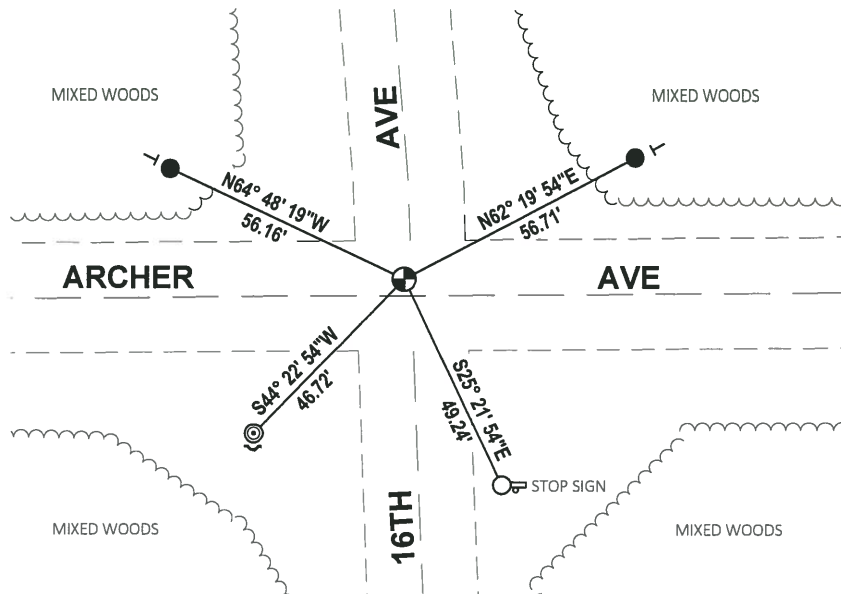
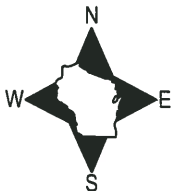
DATA SHOWN HERE ON THIS TIE SHEET IS CORRECT AND COMPLETE TO THE BEST OF MY KNOWLEDGE AND BELIEF.

PROFESSIONAL LAND SURVEYOR

DATE 7-18-18

TIE SKETCH

NOTE: THE CORNER FALLS 4± NORTH OF THE CENTERLINE OF ARCHER AVE AND 1± WEST OF THE CENTERLINE OF 16TH AVE.



- SET 3/4" x 18" IRON REBAR, 1.50#/FT
- FOUND 3/4" IRON ROD
- ⊙ FOUND 2-3/8" O.D. IRON PIPE
- ⊕ FOUND HARRISON MONUMENT
- ↘ STEEL FENCE POST
- └ VINYL "T" POST

ADAMS COUNTY

Survey Monument Record

TYPE OF MONUMENT: Harrison Standard

STATE PLANE COORDINATES: N _____

E _____

ELEVATION — M.S.L. DATUM: _____

THETA ANGLE: _____

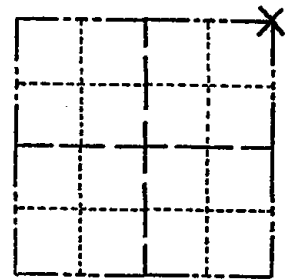
FIELD BOOK: _____ PAGE _____

CORNER NO. 446

SECTION 27

TOWN 20

RANGE 5



LOCATION
(Indicated by 'X')

SEAL:



BASIS FOR MONUMENT LOCATION

(Use reverse side if necessary)

Show info such as: History of corner, with reference to Vol. and pg, dates, surveyor; exact description of monument replaced; if location computed, by taped or EDM traverse; landowner remarks, etc.

Monumented point used by Paul Carroll, R.L.S., as shown in certified survey in the Northeast corner of the section.

Ok 4-24-84 SS-DK

2 NEW TIES 6-12-89 MK-SS

5-04-09 MON 10" DEEP - 4 NEW TIES

OK 4-27-79 JSK-RN

OK 2-11-94 CR-SS

OK 12-28-98 - JL

OK, 1-29-04, JG-DA

CERTIFIED CORRECT:

Anthony B. Kiedrowski

Registered Land Surveyor

DATE: July 30, 1974

TIE SKETCH

All ties to nail and disc.

(Show at least four ties)

