

PUBLIC LAND SURVEY MONUMENT RECORD

TYPE OF MONUMENT: HARRISON
 ADAMS COUNTY COORDINATES, NAD 83 (2007)

N. 298131.605

E. 520105.374

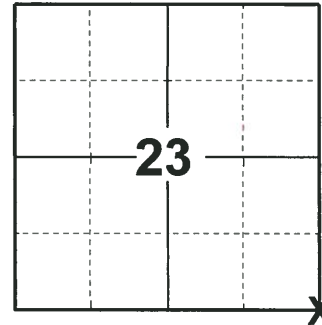
ELEVATION- _____ DATUM _____

FIELD WORK DATE: 06/07/2018

BASIS FOR MONUMENT LOCATION

2015- PLS 2452 FOUND A HARRISON MONUMENT 10"± BELOW THE ASPHALT PAVEMENT PER TIE SHEET BY R.W. NORDIN, DATED 7-23-74. ACCEPTED THE HARRISON MONUMENT AND PLACED 4 NEW TIES.

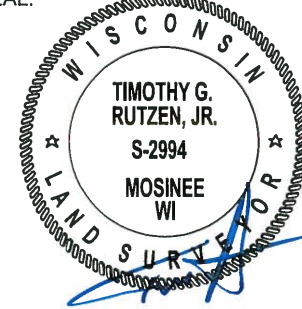
2018- PLS 2994 FOUND A HARRISON MONUMENT 12" BELOW THE ROAD SURFACE, 4 TIES AND 1 PROPERTY IRON. THE MONUMENT AGREES WITH THE EXISTING TIES. ACCEPTED THE HARRISON MONUMENT AS THE CORNER LOCATION AND RE-MEASURED TO THE TIES AND PROPERTY IRON.



LOCATION

(INDICATE CORNER BY "X")

SEAL:



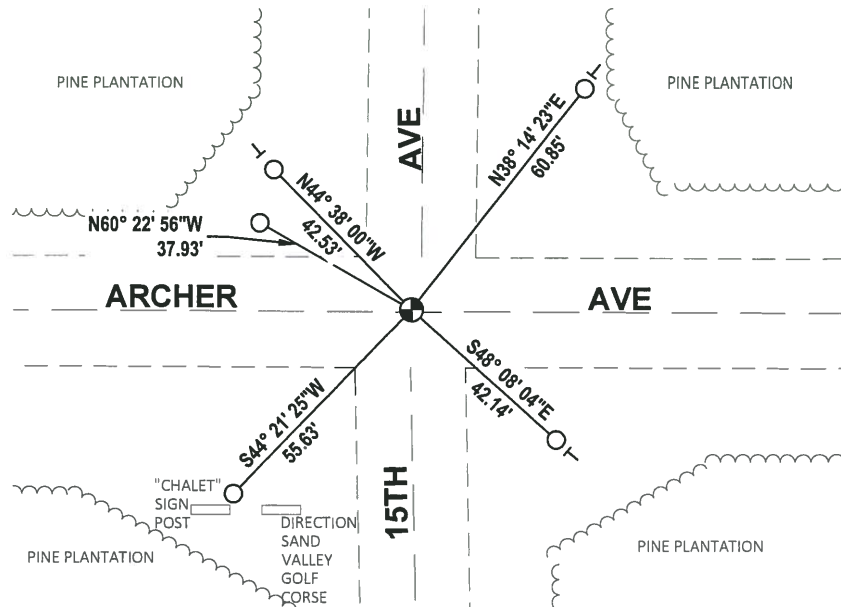
DATA SHOWN HERE ON THIS TIE SHEET IS CORRECT AND COMPLETE TO THE BEST OF MY KNOWLEDGE AND BELIEF.

PROFESSIONAL LAND SURVEYOR

DATE 7-18-18

- TIE SKETCH

NOTE: THE CORNER FALLS 0.5'± NORTH OF THE CENTERLINE OF ARCHER AVE.

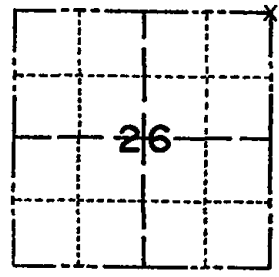


- FOUND 3/4" IRON ROD
- ⊙ FOUND HARRISON MONUMENT
- └ VINYL "T" POST

ADAMS COUNTY
Survey Monument Record

TYPE OF MONUMENT: HARRISON
 STATE PLANE COORDINATES: N _____
 E _____
 ELEVATION — M.S.L. DATUM: _____
 THETA ANGLE: _____
 FIELD BOOK: _____ PAGE _____

CORNER NO. 418 ⁽⁹¹⁾
 SECTION 26
 TOWN 20 N.
 RANGE 5 E.



LOCATION
 (Indicated by 'X')

SEAL:

BASIS FOR MONUMENT LOCATION

(Use reverse side if necessary)

Show info such as: History of corner, with reference to Vol. and pg, dates, surveyor; exact description of monument replaced; if location computed, by taped or EDM traverse; landowner remarks, etc.

RECOVERED 3/4" X 24" IRON ROD IN INTERSECTION OF TOWN ROADS, 1 FOOT BELOW SURFACE. REPLACED WITH HARRISON MONUMENT. 1 FOOT BELOW SURFACE.

Updated map is on reverse of this sheet 4-24-84



OK 4-27-79 JSK-RN

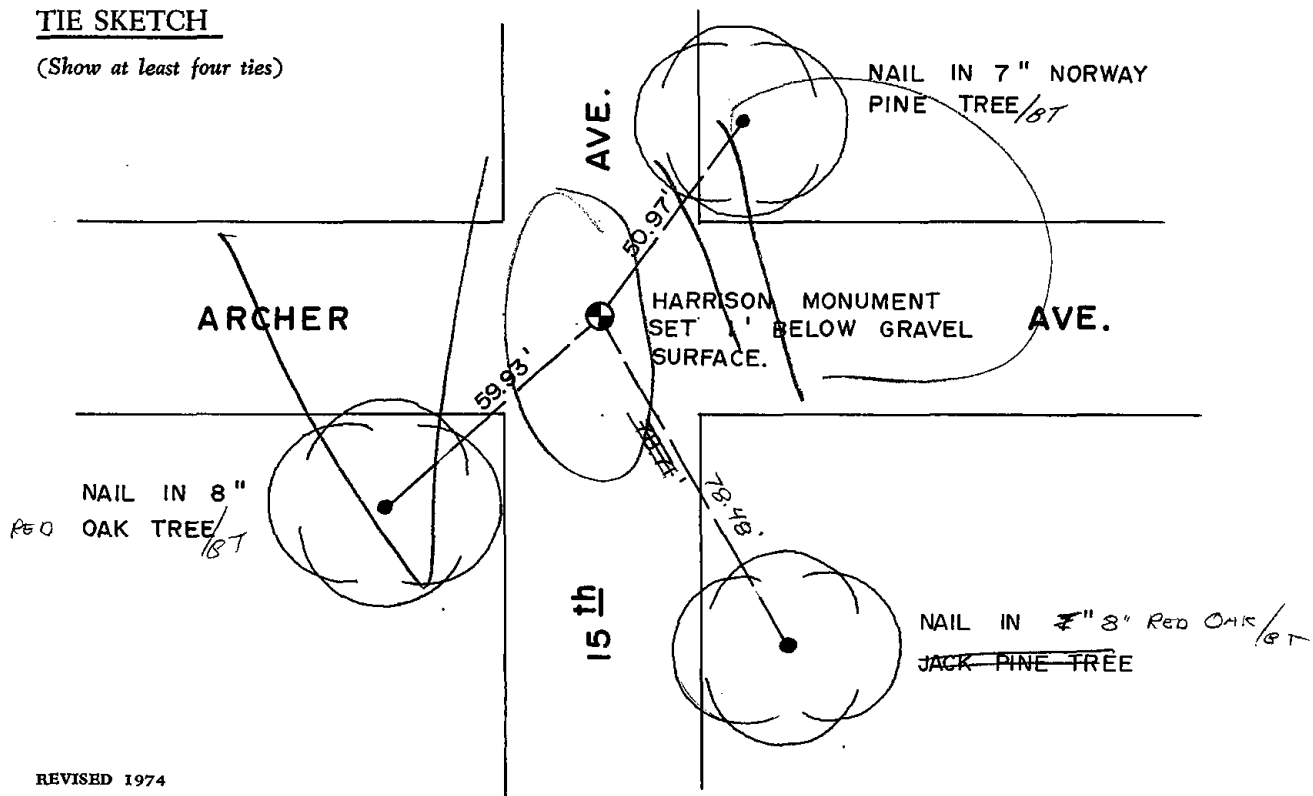
CERTIFIED CORRECT:

R. W. Nordin
 Registered Land Surveyor

DATE: 7-23-74.

TIE SKETCH

(Show at least four ties)

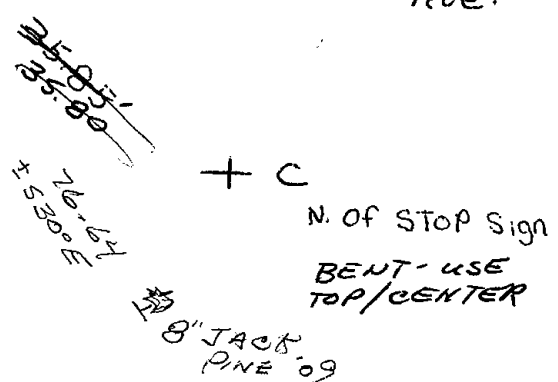
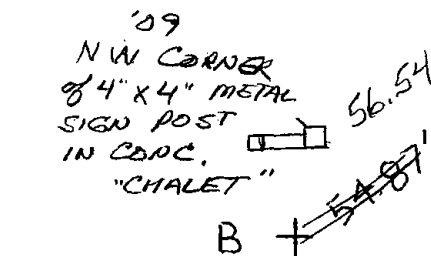
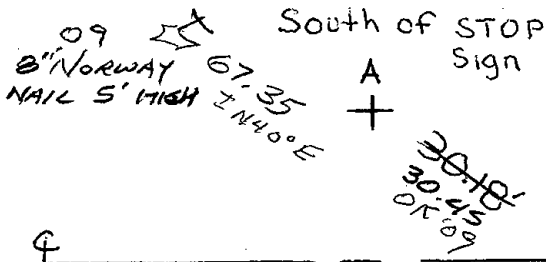


segments

A-B 70.00 feet (70.00)

A-C 65.98 feet

B-C 54.40 feet (55.52) ± 3' SE



Three new ties were set on 4-24-84 SS-DK

"Pt. A" RESET TOP 18"± OF POST
ADJ. TO REMAINING PORTION OF POST 6-12-89 MK-SS
MAR. 10" ± BELOW ROAD SURFACE

OK 3-2-94 - JG

OK 12-28-98 - JG

OK 1-19-04 - JG

ADD 12" DEEP - OLD POST NW'OK
4 NEW TIES 5-04-09 SS