

## PUBLIC LAND SURVEY MONUMENT RECORD

TYPE OF MONUMENT: HARRISON (BROKEN-TOP)  
ADAMS COUNTY COORDINATES, NAD 83 (2007)

N. 295462.966

E. 525548.223

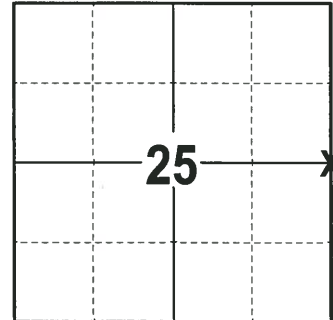
ELEVATION-      DATUM     

FIELD WORK DATE: 02/13/2018

### BASIS FOR MONUMENT LOCATION

2015 - PLS 2452 FOUND A HARRISON MONUMENT WITH THE TOP BROKEN OFF 6"± BELOW THE GRADE OF A SAND/DIRT ROAD PER TIE SHEET BY WAYNE BASLER, DATED 6-15-81. FOUND A 1" IRON PIPE SOUTHEASTERLY OF THE HARRISON MONUMENT. ACCEPTED THE HARRISON MONUMENT AS THE CORNER, TIED INTO THE 1" PIPE AND PLACED 4 ADDITIONAL TIES. DATE OF FIELD SURVEY & MONUMENT RECOVERY WAS SEPTEMBER 02, 2015.

2018 - PLS 2994 FOUND A HARRISON MONUMENT WITH A BROKEN-TOP 30" BELOW THE GROUND SURFACE AND 4 TIES. THE MONUMENT AGREES WITH THE EXISTING TIES. ACCEPTED THE HARRISON MONUMENT WITH A BROKEN-TOP AS THE CORNER LOCATION. RE-SET THE TIE TO THE NORTHEAST (DISTURBED) AND RE-MEASURED TO ALL TIES.



**LOCATION**  
(INDICATE CORNER BY "X")

SEAL:



DATA SHOWN HERE ON THIS TIE SHEET IS CORRECT AND COMPLETE TO THE BEST OF MY KNOWLEDGE AND BELIEF.

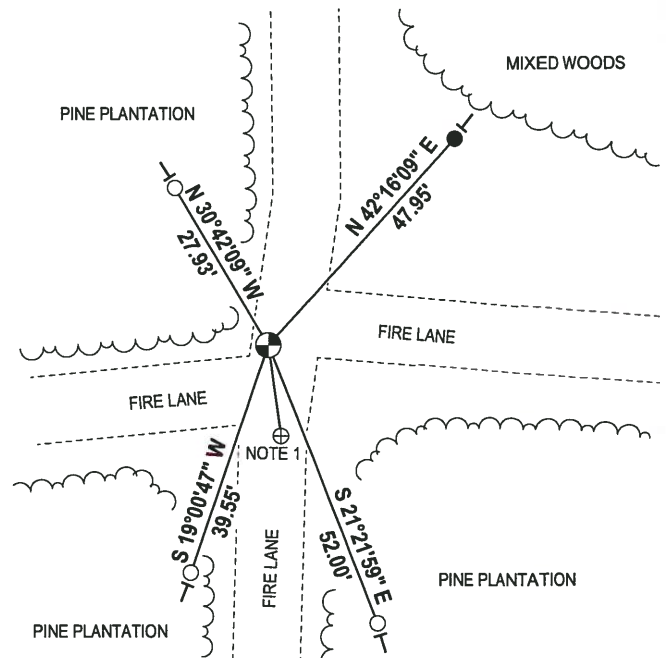
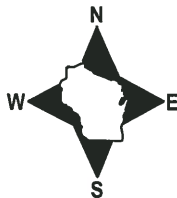
PROFESSIONAL LAND SURVEYOR

DATE 3-1-18

### - TIE SKETCH

NOTE 1: THE 1-1/4" O.D. IRON PIPE IS S 07°36'19" E, 9.26' OF THE CORNER LOCATION.

NOTE 2: THE CORNER FALLS 1± WEST OF THE CENTERLINE OF THE FIRE LANE.



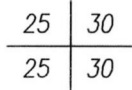
- 3/4" IRON ROD FOUND (RE-SET)
- 3/4" IRON ROD FOUND
- ⊕ 1-1/4" O.D. IROD PIPE FOUND
- ⊙ HARRISON (BROKEN-TOP) FOUND
- VINYL "T" POST

# U.S. PUBLIC LAND SURVEY MONUMENT RECORD

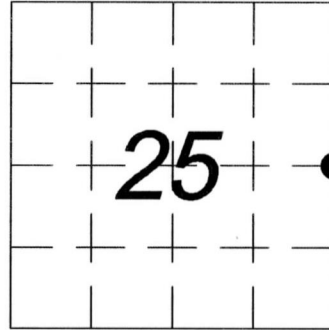
INSTRUCTIONS: This record shall show the location of the corner and shall include all of the following nine elements (a through i).

(a) Identify the corner by reference to the U.S. Public Land Survey System.

● = Corner monument restored.



EAST QUARTER CORNER OF SECTION 25,  
TOWNSHIP 20 NORTH, RANGE 05 EAST,  
TOWN OF ROME, ADAMS COUNTY, WISCONSIN



BEARINGS ARE REFERENCED TO  
THE WISCONSIN COUNTY  
COORDINATE SYSTEM, ADAMS  
COUNTY, WISCONSIN

(b) Describe any record evidence, monument evidence, occupational evidence, testimonial evidence, or any other material evidence you considered, and whether the monument was found or placed.

I found a Harrison Monument with the top broken off 6"± below grade of a sand/dirt road per tie sheet by Wayne Basler, dated, 6-15-81. I found a 1" iron pipe southeasterly of the Harrison Monument. I accepted the Harrison Monument (see picture), tied into the 1" pipe and placed four (4) ties all as referenced below. Date of field survey & monument recovery was September 02, 2015. Elevations provided on section corners are based upon the NAVD88 Datum.

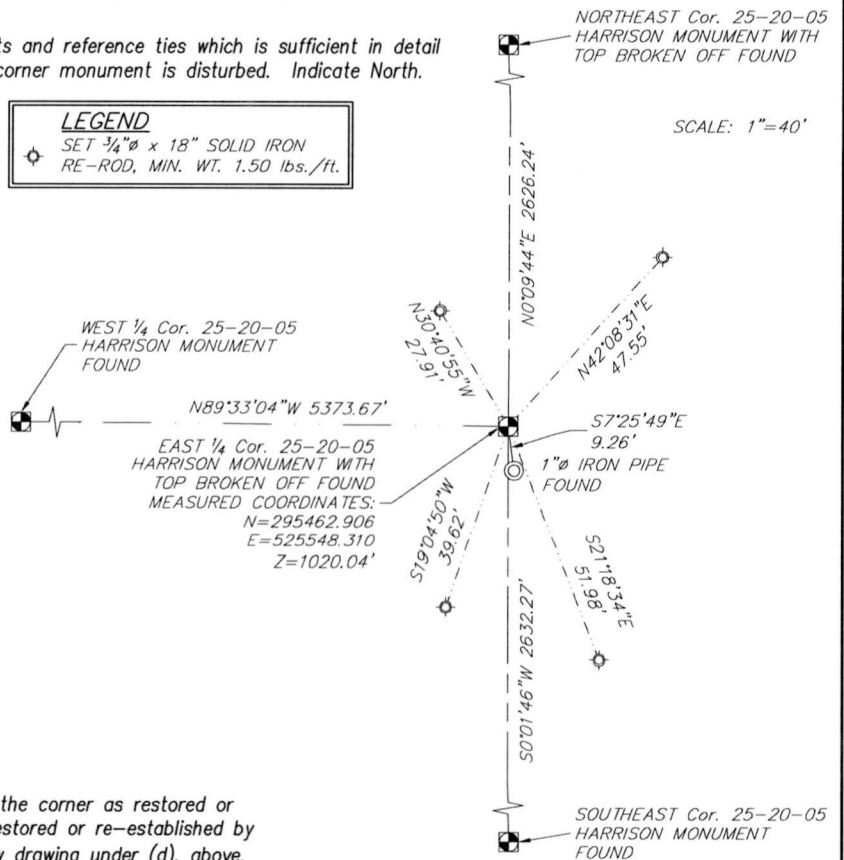
(c) In the plan view drawing below, provide reference ties to at least 4 witness monuments. (Witness monuments shall be made of concrete, natural stone, iron, or other equally durable material.) Describe witness monuments.

(d) Show a plan view drawing depicting the relevant monuments and reference ties which is sufficient in detail to enable accurate relocation of the corner monument if the corner monument is disturbed. Indicate North.

SECTION CORNER MONUMENT FOUND



**LEGEND**  
 SET 3/4"Ø x 18" SOLID IRON  
 RE-ROD, MIN. WT. 1.50 lbs./ft.



(e) Describe any material discrepancy between the location of the corner as restored or re-established and the location of that corner as previously restored or re-established by distance and direction. Show the discrepancy on the plan view drawing under (d), above. Show the distances between the corner as previously restored or re-established and (1) the corner as restored or re-established, and (2) to at least 2 of the 4 witness monuments shown on the drawing in (d), above.

No known discrepancy.

(f) Was the corner restored through acceptance of (1) an obliterated evidence location, or, (2) a found perpetuated location?

Found perpetuated location.

(g&h) Was the corner re-established through lost corner proportionate methods? If so, show the method, including the directions and distances to other public land survey corners used as evidence or used for proportioning in determining the corner location.

Found perpetuated location.

(i) I, Michael S. Marty, Professional Land Surveyor No. 2452, hereby certify that the corner location shown on this record was determined by me or under my direction and control and that this U.S. Public Land Survey Monument Record is correct and complete to the best of my knowledge and belief.

*Michael S. Marty*  
 By: Vierbicher Associates, Inc.  
 Michael S. Marty, P.L.S. No. 2452

9/22/2015  
 Date

Affix Land Surveyor Seal



**vierbicher**  
 planners | engineers | advisors



FN: 150044  
 DATE: 09/22/2015  
 Drafted By: MMAR  
 Checked By: MZIE

REEDSBURG - MADISON - PRAIRIE DU CHIEN  
 999 Fourier Drive, Suite 201 Madison, Wisconsin 53717  
 Phone: (608) 826-0532 Fax: (608) 826-0530