

PUBLIC LAND SURVEY MONUMENT RECORD

TYPE OF MONUMENT: HARRISON
 ADAMS COUNTY COORDINATES, NAD 83 (2007)

N. 292838.331

E. 517612.879

ELEVATION- DATUM

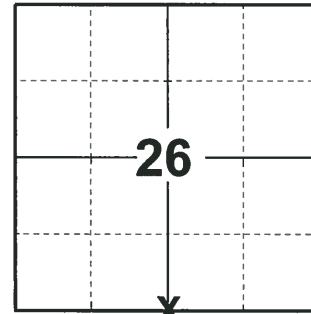
FIELD WORK DATE: 06/11/2018

BASIS FOR MONUMENT LOCATION

1974- PLS 791 NOTES THE ORIGINAL CORNER WAS OBLITERATED; CALCULATED CORNER BY SINGLE PROPORTIONAL MEASUREMENT BETWEEN THE SOUTHEAST AND SOUTHWEST CORNERS OF SECTION 26. EDM USED IN MEASUREMENTS TO DETERMINE LOCATION OF CORNER. SET HARRISON 2" ABOVE THE GROUND SURFACE AND TIED OUT.

2004 - PLS (UNKNOWN) 3 NEW TIES ADDED.

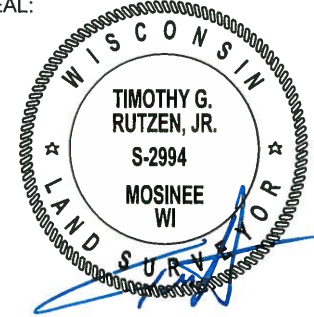
2018- PLS 2994 FOUND A HARRISON MONUMENT FLUSH WITH THE GROUND SURFACE AND 4 TIES. ACCEPTED THE HARRISON MONUMENT AS THE CORNER AND RE-MEASURED TO THE EXISTING TIES.



LOCATION

(INDICATE CORNER BY "X")

SEAL:



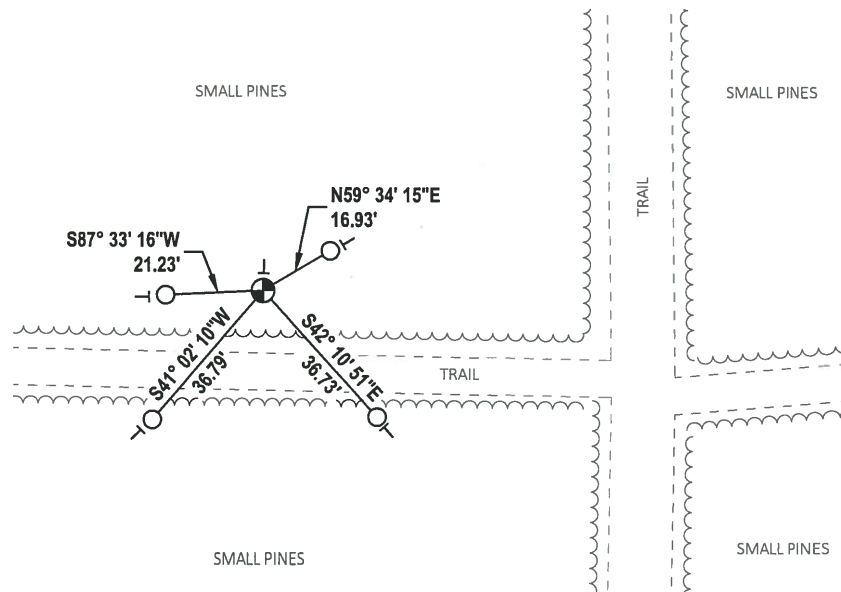
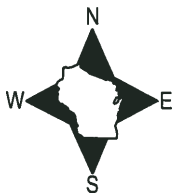
DATA SHOWN HERE ON THIS TIE SHEET IS CORRECT AND COMPLETE TO THE BEST OF MY KNOWLEDGE AND BELIEF.

PROFESSIONAL LAND SURVEYOR

DATE 7-18-18

TIE SKETCH

NOTE: THE CORNER FALLS 18'± NORTH OF THE TRAIL.



- FOUND 3/4" IRON ROD
- ⊕ FOUND HARRISON MONUMENT
- ⊖ VINYL "T" POST

ADAMS COUNTY

Survey Monument Record

TYPE OF MONUMENT: HARRISON

STATE PLANE COORDINATES: N _____

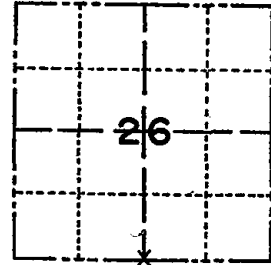
E _____

ELEVATION — M.S.L. DATUM: _____

THETA ANGLE: _____

FIELD BOOK: _____ PAGE _____

CORNER NO. 416 (110)
SECTION 26
TOWN 20 N.
RANGE 5 E.



LOCATION
(Indicated by 'X')

SEAL:

BASIS FOR MONUMENT LOCATION

(Use reverse side if necessary)

Show info such as: History of corner, with reference to Vol. and pg, dates, surveyor; exact description of monument replaced; if location computed, by taped or EDM traverse; landowner remarks, etc.

ORIGINAL CORNER OBLITERATED; SET HARRISON MONUMENT 2" ABOVE GROUND SURFACE BY SINGLE PROPORTIONAL MEASUREMENT BETWEEN THE SOUTHEAST AND SOUTHWEST CORNERS OF SECTION 26. EDM USED IN MEASUREMENTS TO DETERMINE LOCATION OF CORNER.



Cor. O.K. - SKETCH REVERSED 11-5-79 85-55

CERTIFIED CORRECT:

R. W. Nordin

Registered Land Surveyor

DATE: 7-23-74.

TIE SKETCH

(Show at least four ties)

