

PUBLIC LAND SURVEY MONUMENT RECORD

TYPE OF MONUMENT: HARRISON
 ADAMS COUNTY COORDINATES, NAD 83 (2007)

N. 290159.972

E. 509715.918

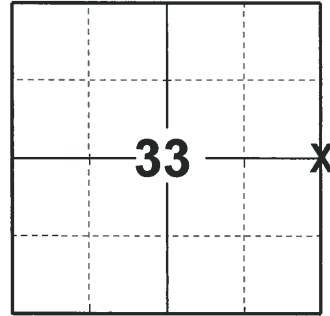
ELEVATION- - - - DATUM - - - -

FIELD WORK DATE: 06/11/2018

BASIS FOR MONUMENT LOCATION

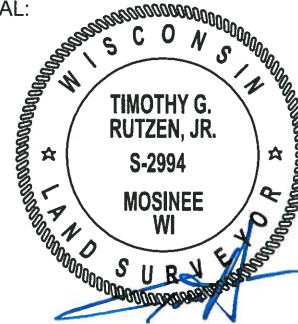
1976 - PLS 841 NO RECORD OR FIELD EVIDENCE WAS RECOVERED. CALCULATED THE CORNER EQUIDISTANT AND ON LINE BETWEEN THE NW AND SW SECTION CORNERS. SET A STANDARD 30" CAST IRON HARRISON MONUMENT AT THE CORNER LOCATION, WITH THE TOP 1"± ABOVE THE GROUND AND TIED OUT.

2018 - PLS 2994 FOUND A HARRISON MONUMENT FLUSH WITH THE GROUND SURFACE AND 1 PROPERTY IRON. FOUND NO EVIDENCE OF ANY OF THE TIES OR WITNESSES. ACCEPTED THE HARRISON MONUMENT AS THE BEST EVIDENCE OF THE CORNER LOCATION. SET 3 NEW TIES AND MEASURED TO THE TIES AND PROPERTY IRON.



LOCATION
 (INDICATE CORNER BY "X")

SEAL:



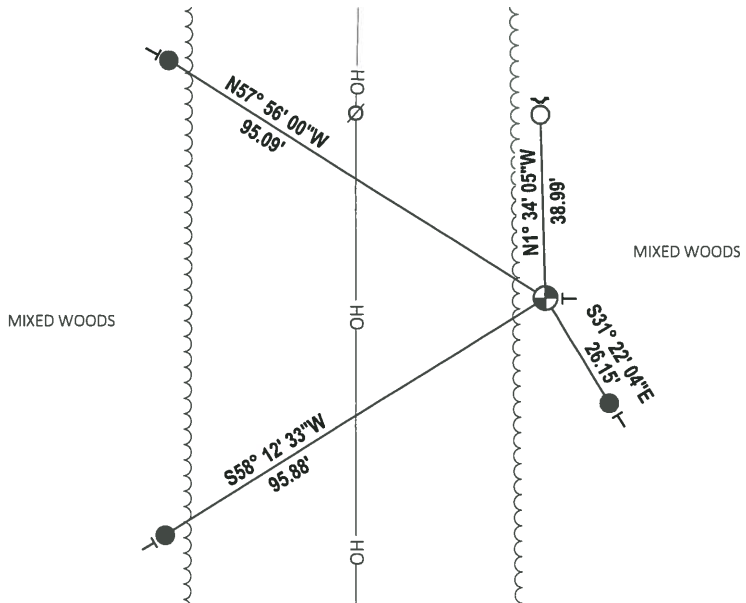
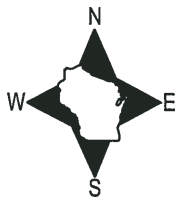
DATA SHOWN HERE ON THIS TIE SHEET IS CORRECT AND COMPLETE TO THE BEST OF MY KNOWLEDGE AND BELIEF.

PROFESSIONAL LAND SURVEYOR

DATE 7-18-18

- TIE SKETCH

NOTE: THE CORNER FALLS 40'± EAST OF THE OVERHEAD UTILITY LINE.



- SET 3/4" x 18" IRON REBAR, 1.50#/FT
- FOUND 3/4" IRON ROD
- ⊕ FOUND HARRISON MONUMENT
- ∅ WITNESS POWER POLE
- ↵ STEEL FENCE POST
- ┌ VINYL "T" POST

ADAMS COUNTY

Survey Monument Record

TYPE OF MONUMENT: WEST 1/4 CORNER

STATE PLANE COORDINATES: N _____
E _____

ELEVATION — M.S.L. DATUM: _____

THETA ANGLE: _____

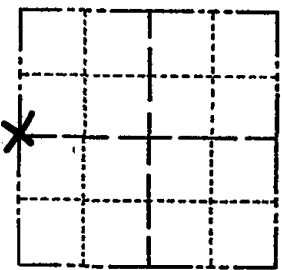
FIELD BOOK: _____ PAGE _____

CORNER NO. 995

SECTION 34

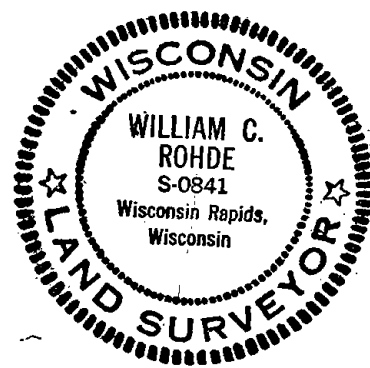
TOWN 20 N.

RANGE 5 E.



LOCATION
(Indicated by 'X')

SEAL:



CERTIFIED CORRECT:
William C. Rohde
Registered Land Surveyor
DATE: JUNE 16, 1976

BASIS FOR MONUMENT LOCATION

(Use reverse side if necessary)

Show info such as: History of corner, with reference to Vol. and pg, dates, surveyor; exact description of monument replaced; if location computed, by taped or EDM traverse; landowner remarks, etc.

NO RECORD OR FIELD EVIDENCE RECOVERED. ESTABLISHED THIS CORNER MIDWAY ON RIGHT LINE BETWEEN NW AND SW SECTION CORNERS, BY EDM/THEODOLITE TRAVERSE. STANDARD 30" CAST IRON "HARRISON" MONUMENT SET AT CORNER LOCATION, WITH TOP 1"± ABOVE GROUND.

OK 5-29-79 PK-SS - TAKE 1ST ROAD WEST AT ANKER VALLEY WILLOW TO 1ST DRIVEWAY - FOLLOW TRAIL TO CORNER OF FIELD HSE # 653

TIE SKETCH

OK 4-24-84 DK-SS

(Show at least four ties)

OK 1-21-99 JG-DR

ASSISTED BY: MARK RONDE AND DANIEL OLSEN, OF WISCONSIN RAPIDS, WIS.

NEW TIE
OK 2-11-1994 CR, SS.

CORNER SIGN ON STEEL POST SET 0.75' NW OF CORNER.

2-NEW TIES

OK 1-9-89 GR-KF

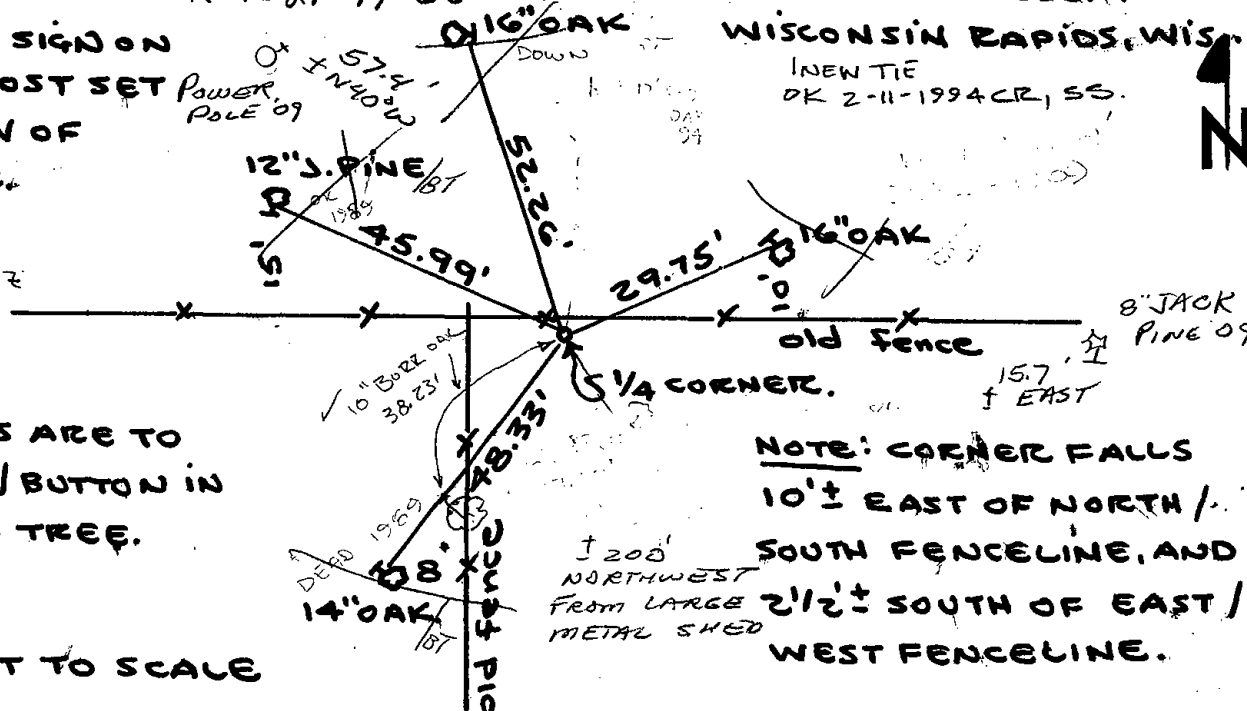
2 NEW TIES
2-13-09 SS

NOTE:

ALL TIES ARE TO PK NAIL/BUTTON IN BLAZED TREE.

NOT TO SCALE

REVISED 1974



NOTE: CORNER FALLS 10'± EAST OF NORTH / SOUTH FENCELINE, AND 2 1/2'± SOUTH OF EAST / WEST FENCELINE.