

34
SECTION

20
TOWN

05
RANGE

ADAMS COUNTY

COUNTY CORNER NO: 118

ROMPORTOL ID: 42005342000

PUBLIC LAND SURVEY MONUMENT RECORD

TYPE OF MONUMENT: HARRISON
ADAMS COUNTY COORDINATES, NAD 83 (2007)

N. 290174.868

E. 514985.179

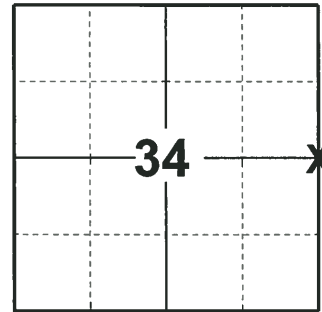
ELEVATION- - - - - DATUM - - - - -

FIELD WORK DATE: 06/11/2018

BASIS FOR MONUMENT LOCATION

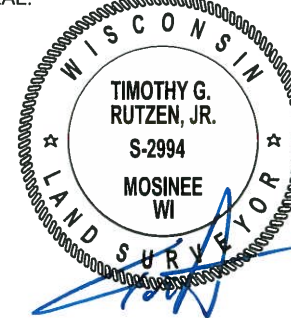
1975 - PLS 742 FOUND A 3/4" IRON PIPE. THE DISTANCE TO THE NORTHEAST CORNER (HARRISON) IS 2660.55 FT AND THE DISTANCE TO THE SOUTHEAST CORNER (HARRISON SET THIS DAY) IS 2660.45 FT. ALSO WAS PART OF CHENEY SURVEY FROM JUNE 27, 1968. THE DISTANCES SHOWED TO THE SOUTH WAS 2661.64 FT. ACCEPTED IRON PIPE AS CORNER AND REPLACED THE IRON PIPE WITH A HARRISON AND TIED OUT.

2018 - PLS 2994 FOUND A HARRISON MONUMENT 12" BELOW THE ROAD SURFACE AND 1 TIE. THE TIE WAS BENT, BUT IT STILL FIT WELL WITH THE MONUMENT. ACCEPTED THE HARRISON MONUMENT AS THE CORNER LOCATION. SET 3 NEW TIES AND MEASURED TO THE TIES.



LOCATION
(INDICATE CORNER BY "X")

SEAL:



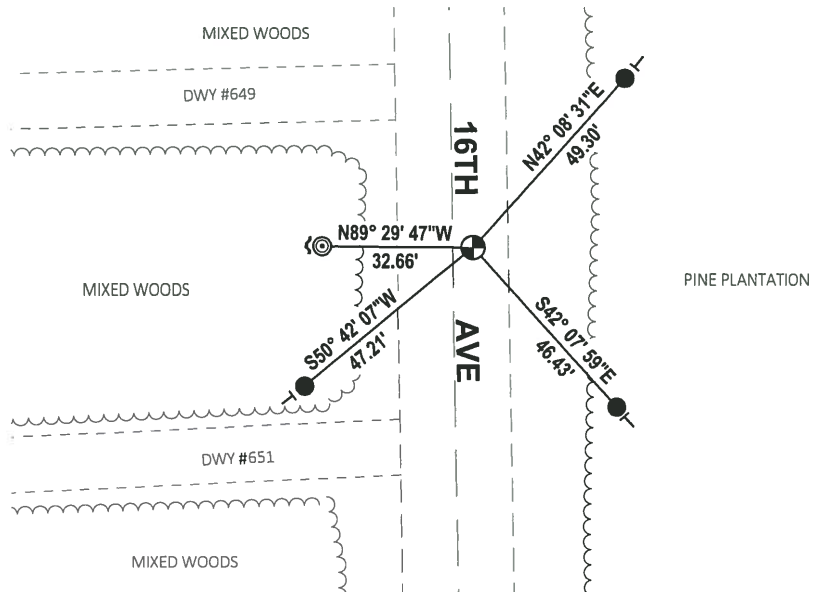
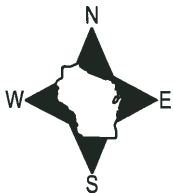
DATA SHOWN HERE ON THIS TIE SHEET IS CORRECT AND COMPLETE TO THE BEST OF MY KNOWLEDGE AND BELIEF.

PROFESSIONAL LAND SURVEYOR

DATE 7-18-18

TIE SKETCH

NOTE: THE CORNER FALLS 4± EAST OF THE CENTERLINE OF 16TH AVE.



- SET 3/4" x 18" IRON REBAR, 1.50#/FT
- ◎ FOUND 2-3/8" O.D. IRON PIPE
- ⊕ FOUND HARRISON MONUMENT
- ↘ STEEL FENCE POST
- VINYL "T" POST

ADAMS COUNTY

Survey Monument Record

TYPE OF MONUMENT: Harrison

STATE PLANE COORDINATES: N _____

E _____

ELEVATION — M.S.L. DATUM: _____

THETA ANGLE: _____

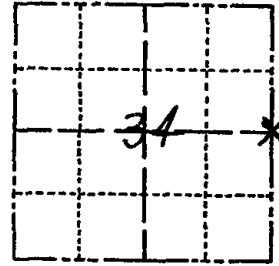
FIELD BOOK: _____ PAGE _____

CORNER NO. 800 (18)

SECTION 34

TOWN 20 N

RANGE 5 E



LOCATION
(Indicated by 'X')

SEAL:

BASIS FOR MONUMENT LOCATION

(Use reverse side if necessary)

Show info such as: History of corner, with reference to Vol. and pg, dates, surveyor; exact description of monument replaced; if location computed, by taped or EDM traverse; landowner remarks, etc.

Found 3/4" pipe and replaced with Harrison - Distance to northeast corner (Harrison) is 2660.55 ft and distance to southeast corner (Harrison set this day) is 2660.45 ft. By EDM and taped traverse. Also was part of Cheney survey of June 27, 1968. He showed distance to south as 2661.64 ft.

2 new 4-25-84 SS-DK

OK 1-9-89 GR-KZ

OK 2-11-1994 CR-SS

OK 12-28-98-JG

OK, 1-29-84-JG-DA



TIE SKETCH OK 11309 SS

(Show at least four ties)

±30' So. of DRIVEWAY TO HSE #651

