

## PUBLIC LAND SURVEY MONUMENT RECORD

TYPE OF MONUMENT: HARRISON  
 ADAMS COUNTY COORDINATES, NAD 83 (2007)

N. 287518.464

E. 512362.838

ELEVATION- \_\_\_\_\_ DATUM \_\_\_\_\_

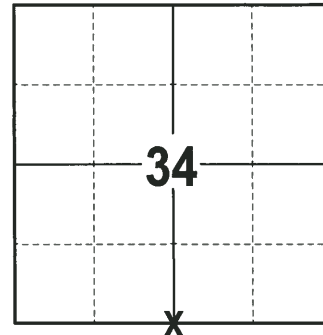
FIELD WORK DATE: 02/08/2018

### BASIS FOR MONUMENT LOCATION

1976 - PLS 841 RECOVERED NO CORNER EVIDENCE. ESTABLISHED THE CORNER EQUIDISTANT BETWEEN SECTION CORNERS. THE CORNER LOCATION IS COMPATIBLE WITH MONUMENTATION OF A RECORD PLAT ON THE QUARTER LINE TO THE NORTH. SET A STANDARD 30" CAST IRON HARRISON MONUMENT AT THE CORNER, WITH THE TOP 3"± BELOW EXISTING BLACK TOP ROAD PAVEMENT. STANDARD CORNER SIGN PLACED ON A POWER POLE 30 1/2' NORTH.

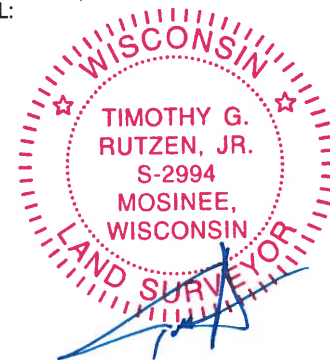
1999 - PLS (UNKNOWN) UPDATED TIE SHEET TO SHOW TIES IN PLACE AFTER THE MONUMENT WAS RE-SET FOLLOWING ROAD CONSTRUCTION.

2018 - PLS 2994 FOUND A HARRISON MONUMENT 12" BELOW THE ROAD SURFACE AND 1 TIE. THE MONUMENT AGREES WITH THE EXISTING TIE. ACCEPTED THE HARRISON MONUMENT AS THE CORNER LOCATION. SET 3 NEW TIES AND MEASURED TO THE TIES.



**LOCATION**  
 (INDICATE CORNER BY "X")

SEAL:



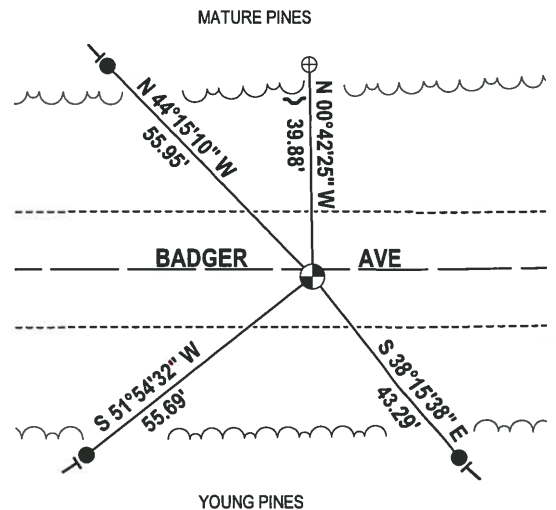
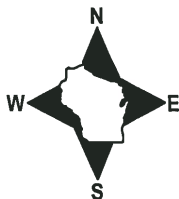
DATA SHOWN HERE ON THIS TIE SHEET IS CORRECT AND COMPLETE TO THE BEST OF MY KNOWLEDGE AND BELIEF.

PROFESSIONAL LAND SURVEYOR

DATE 3-1-18

### - TIE SKETCH

NOTE: THE CORNER FALLS 1± SOUTH OF THE CENTERLINE OF BADGER AVE.

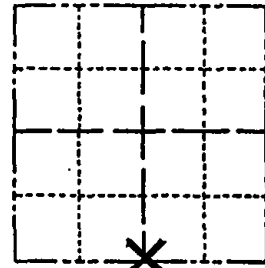


- 3/4" x 18" IRON REBAR SET, 1.50#/FT
- ⊕ 2-3/8" O.D. IRON PIPE FOUND
- ⊙ HARRISON FOUND
- ✓ STEEL FENCE POST
- VINYL "T" POST

# Government Land Corner Certificate

ADAMS County  
 TYPE OF MONUMENT: Harrison standard  
 STATE PLANE COORDINATES: N \_\_\_\_\_  
 E \_\_\_\_\_  
 ELEVATION — M.S.L. DATUM: \_\_\_\_\_  
 THETA ANGLE: \_\_\_\_\_  
 FIELD BOOK: \_\_\_\_\_ PAGE \_\_\_\_\_  
 DRAWN BY: \_\_\_\_\_

CORNER NO. 128  
 SECTION 34  
 TOWN 20  
 RANGE 5



LOCATION  
(Indicated by 'X')

SEAL: \_\_\_\_\_

## BASIS FOR MONUMENT LOCATION

Show info such as: History of corner, with reference to Vol. and pg., dates, surveyor; exact description of monument replaced; if location computed, by taped or EDM traverse; landowner remarks, etc. (Use reverse side if necessary)

This is an updated tie sheet to show ties in place after monument was reset following road construction.

SEE TIE SHEET BY W. ROLFE DATED 8-14-76 FOR ADDITIONAL INFORMATION.

DATA SHOWN HERE ON CERTIFIED CORRECT:

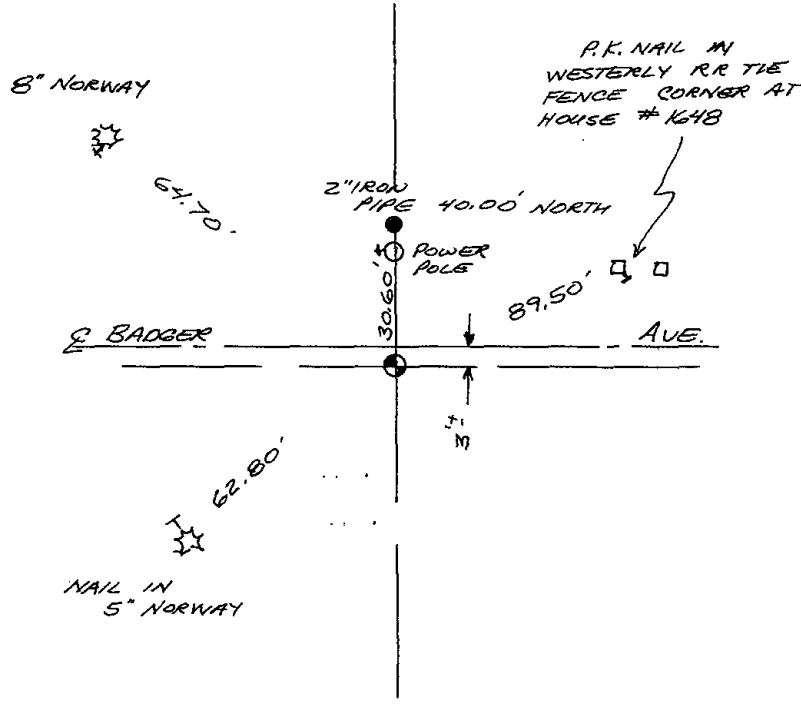
Registered Land Surveyor

DATE: \_\_\_\_\_

## TIE SKETCH

Show at least four ties, also fence lines, roads, topo, size and type of witness trees and if off road - best way to arrive at corner.

HARRISON RESET 6-10-99



## MAINTENANCE RECORD

Date	Init.	Remarks
1-29-04	JG-DA	ALL OK
1-13-09	SS	OK

ADAMS COUNTY

Survey Monument Record

TYPE OF MONUMENT: SOUTH 1/4 CORNER

STATE PLANE COORDINATES: N \_\_\_\_\_  
E \_\_\_\_\_

ELEVATION — M.S.L. DATUM: \_\_\_\_\_

THETA ANGLE: \_\_\_\_\_

FIELD BOOK: \_\_\_\_\_ PAGE \_\_\_\_\_

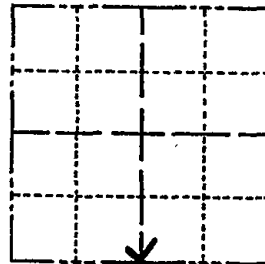
W. Rohde, M. Rohde, D. Olsen 75°E

BASIS FOR MONUMENT LOCATION TOWN OF ROME

(Use reverse side if necessary)

Show info such as: History of corner, with reference to Vol. and pg, dates, surveyor; exact description of monument replaced; if location computed, by taped or EDM traverse; landowner remarks, etc.

CORNER NO. 1000  
SECTION 34  
TOWN 20N.  
RANGE 5E.



LOCATION  
(Indicated by 'X')

SEAL:



**NO CORNER EVIDENCE RECOVERED.  
ESTABLISHED CORNER EQUIDISTANT  
BETWEEN SECTION CORNERS PER  
SS. 59.62 WISCONSIN STATUTES. THE  
CORNER LOCATION IS COMPATIBLE WITH  
MONUMENTATION OF A RECORD PLAT  
ON QUARTER LINE TO NORTH. SET A  
STANDARD 30" EAST IRON "HARRISON  
MONUMENT AT CORNER, WITH TOP  
3"± BELOW EXISTING BLACKTOP ROAD  
PAVEMENT. STANDARD CORNER SIGN  
PLACED ON POWER POLE 30 1/2' NORTH.**

OK 1-9-89  
SZ-KZ

OK 4-27-79  
JSK-RN

OK 4-17-84  
SS-DK

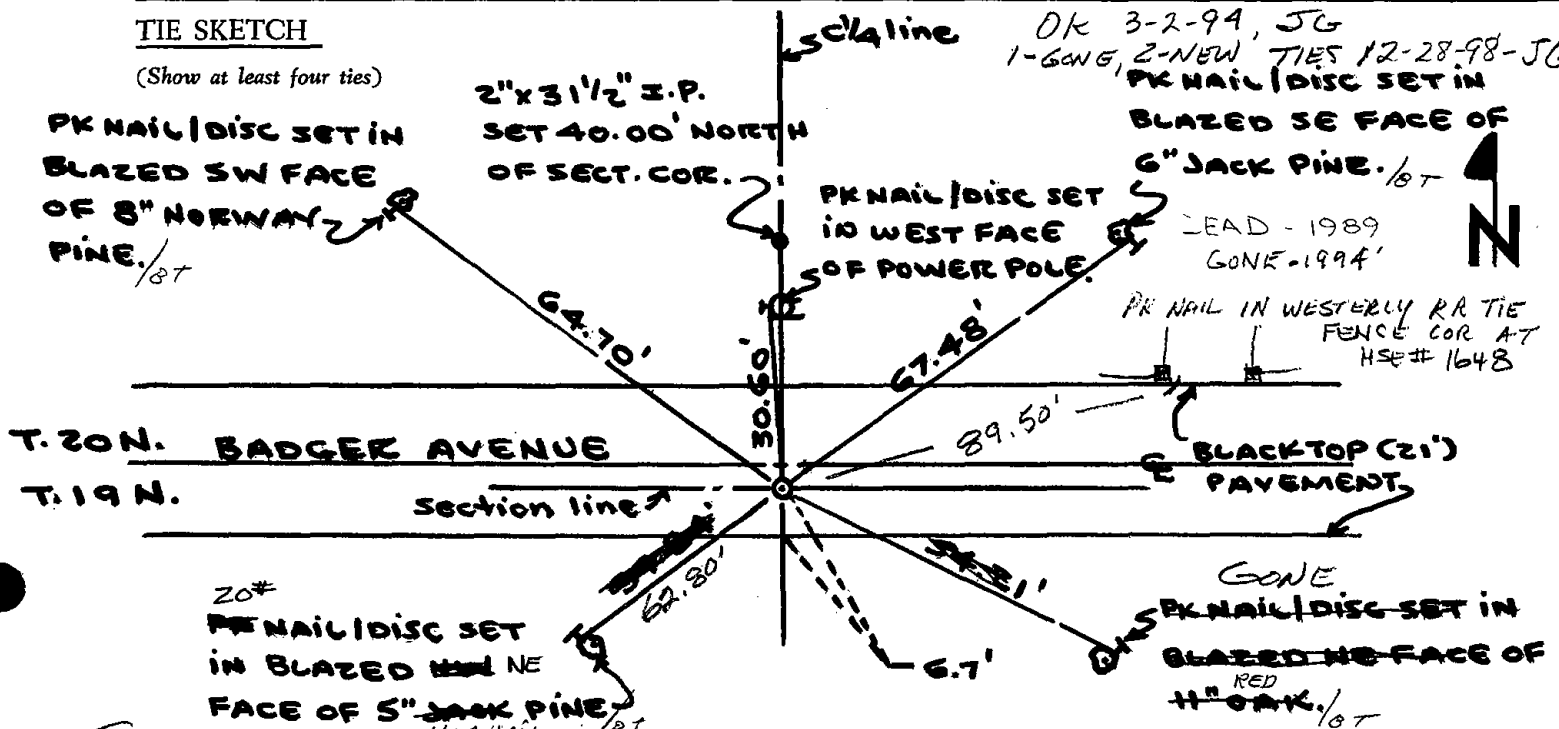
CERTIFIED CORRECT:

*William Rohde*  
Registered Land Surveyor

DATE: 8/14/76

TIE SKETCH

(Show at least four ties)



NOT TO SCALE

(MOST NORTHERLY NORWAY IN ROW 3  
REVISED 1974  
OF LARGER NORWAY)