

## PUBLIC LAND SURVEY MONUMENT RECORD

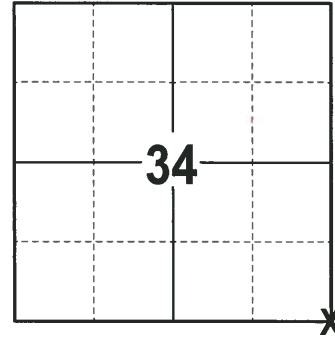
TYPE OF MONUMENT: HARRISON  
 ADAMS COUNTY COORDINATES, NAD 83 (2007)

N. 287514.704

E. 515002.904

ELEVATION-      -      -      DATUM      -      -     

FIELD WORK DATE: 02/12/2018



**LOCATION**  
 (INDICATE CORNER BY "X")

SEAL:



DATA SHOWN HERE ON THIS TIE SHEET IS CORRECT AND COMPLETE TO THE BEST OF MY KNOWLEDGE AND BELIEF.

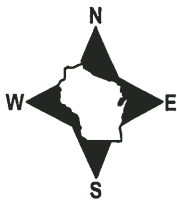
PROFESSIONAL LAND SURVEYOR

DATE 3-1-18

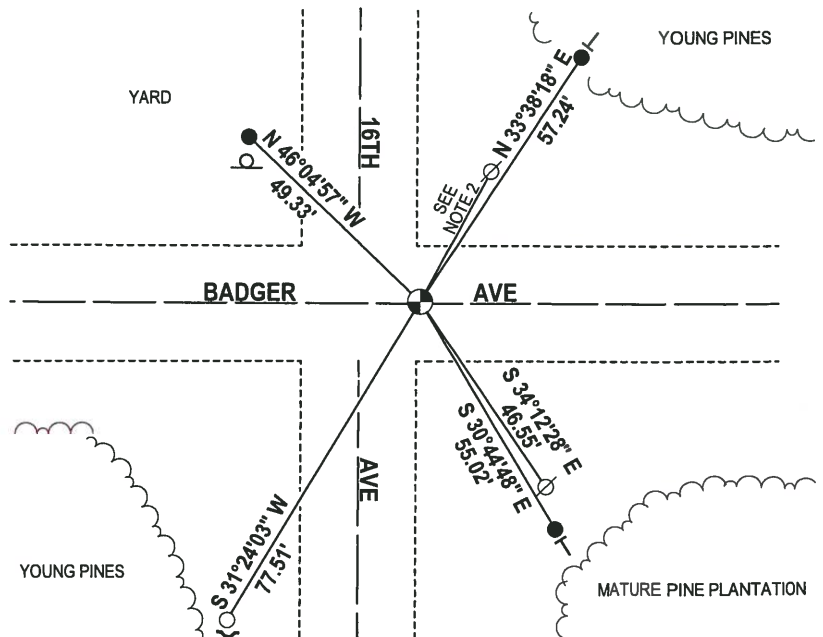
### TIE SKETCH

NOTE 1: THE CORNER FALLS 13± EAST OF THE CENTERLINE OF 16TH AVE AND 0.5± NORTH OF THE CENTERLINE OF BADGER AVE.

NOTE 2: THE WITNESS POWER POLE FALLS N 28°46'08" E, 30.85' OF THE CORNER LOCATION.



- 3/4" x 18" IRON REBAR SET, 1.50#/FT
- 3/4" IRON ROD FOUND
- ⊕ HARRISON FOUND
- ⊘ WITNESS POWER POLE FOUND
- ⊔ STOP SIGN
- ↙ STEEL FENCE POST
- VINYL "T" POST



# Government Land Corner Certificate

ADAMS County

TYPE OF MONUMENT: Harrison standard

STATE PLANE COORDINATES: N \_\_\_\_\_  
E \_\_\_\_\_

ELEVATION — M.S.L. DATUM: \_\_\_\_\_

THETA ANGLE: \_\_\_\_\_

FIELD BOOK: \_\_\_\_\_ PAGE \_\_\_\_\_

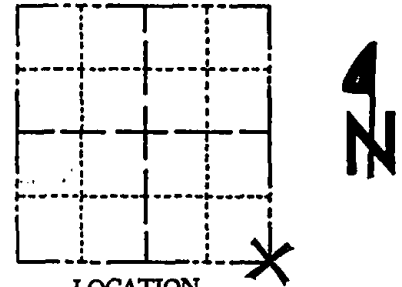
DRAWN BY: \_\_\_\_\_

CORNER NO. 129

SECTION 34

TOWN 20

RANGE 5



LOCATION  
(Indicated by 'X')

SEAL:

## BASIS FOR MONUMENT LOCATION

Show info such as: History of corner, with reference to Vol. and pg., dates, surveyor; exact description of monument replaced; if location computed, by taped or EDM traverse; landowner remarks, etc. (Use reverse side if necessary)

This is an updated tie sheet to show ties in place after monument was reset following road construction.

DATA SHOWN HERE ON  
CERTIFIED CORRECT:

Registered Land Surveyor

DATE: \_\_\_\_\_

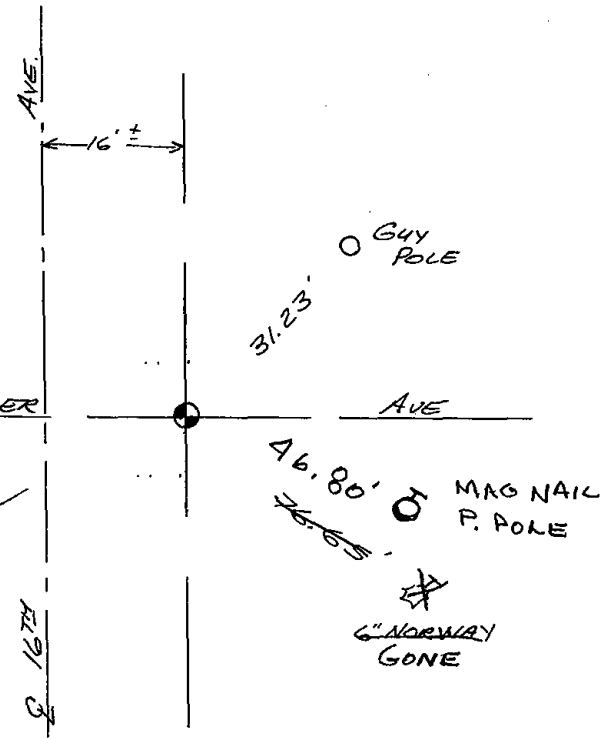
## TIE SKETCH

Show at least four ties, also fence lines, roads, topo, size and type of witness trees' and if off road - best way to arrive at corner.

HARRISON RESET 6-10-99.

SEE TIE SHEET DATED  
NOV. 1975, BY K. CARLSON FOR  
ADDITIONAL INFORMATION.

DOUBLE NAIL  
IN SOUTHEAST  
FACE OF  
12" OAK



## MAINTENANCE RECORD

Date	Init.	Remarks
1-29-04	JG-DA	1-GONE, 1-NEW
2-12-09	SS	1 NEW TIE

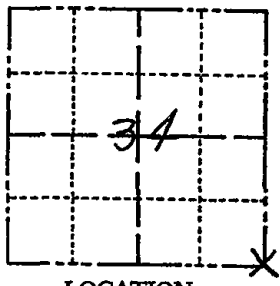
3/4" RED SET  
6" N.E. of  
STUMP 109  
77.65'  
83.65'  
16" OAK

ADAMS COUNTY

Survey Monument Record

TYPE OF MONUMENT: Harrison  
STATE PLANE COORDINATES: N \_\_\_\_\_  
E \_\_\_\_\_  
ELEVATION — M.S.L. DATUM: \_\_\_\_\_  
THETA ANGLE: \_\_\_\_\_  
FIELD BOOK: \_\_\_\_\_ PAGE \_\_\_\_\_

CORNER NO. 819  
SECTION 34  
TOWN 20 N  
RANGE 5 E



BASIS FOR MONUMENT LOCATION

(Use reverse side if necessary)

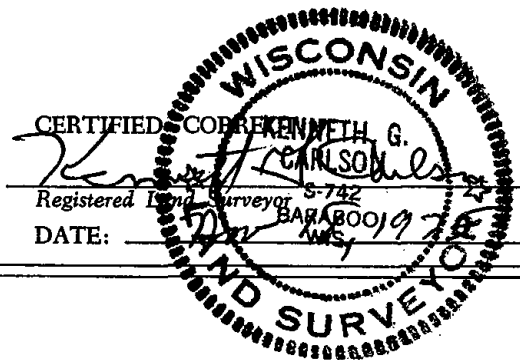
Show info such as: History of corner, with reference to Vol. and pg, dates, surveyor; exact description of monument replaced; if location computed, by taped or EDM traverse; landowner remarks, etc.

SEAL: LOCATION (Indicated by 'X')

Found 1 1/4" pipe and replaced with Harrison. This apparently was part of Cheney survey of June 27, 1968. Cheney had 5278.4 ft to south west corner. I found the distance to the east (a railroad spike (not the corner) at the intersection of Badger and 15th Ave) to be 5276.52 ft. By EDM survey.

Ok 4-17-84 SS-DK

- OK 4-27-79 JSK-RN
- OK 1-9-89 GR-KZ
- 1-GONE 3-2-94 JG



TIE SKETCH OK-12-28-98-JG

(Show at least four ties)

