

06
SECTION

20
TOWN

06
RANGE

ADAMS COUNTY

COUNTY CORNER NO: 3

ROMPORTOL ID: 42006069000

PUBLIC LAND SURVEY MONUMENT RECORD

TYPE OF MONUMENT: HARRISON
ADAMS COUNTY COORDINATES, NAD 83 (2007)

N. 321690.106

E. 530511.499

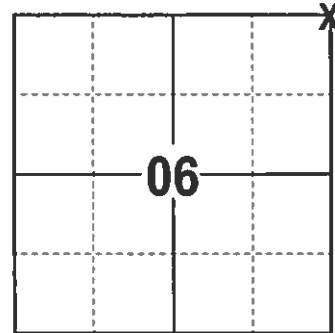
ELEVATION- --- DATUM ---

FIELD WORK DATE: 12/19/2016

BASIS FOR MONUMENT LOCATION

1981 - PLS 878 FOUND A 2" X 36" IRON PIPE WITH A CROSS BAR ON THE BOTTOM. REPLACED THE PIPE WITH A HARRISON AND IS ON A STRAIGHT LINE BETWEEN ADJACENT WOOD COUNTY CORNERS.

2017 - PLS 2994 FOUND EXISTING HARRISON AND 2 EXISTING TIES. THE HARRISON AGREES WITH EXISTING TIES. ACCEPTED HARRISON AND SET 2 NEW TIES.



LOCATION
(INDICATE CORNER BY "X")

SEAL:

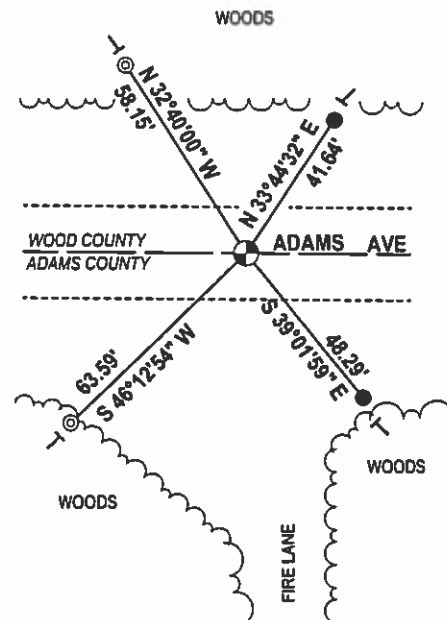
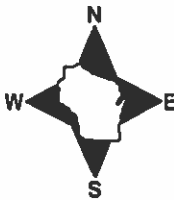


DATA SHOWN HERE ON THIS TIE SHEET IS CORRECT AND COMPLETE TO THE BEST OF MY KNOWLEDGE AND BELIEF.

PROFESSIONAL LAND SURVEYOR

DATE 2/9/17

TIE SKETCH

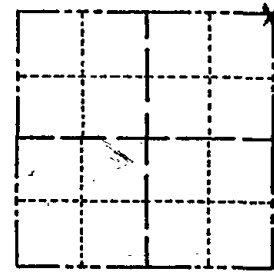


- 3/4" x 18" IRON REBAR SET, 1.50#/FT
- ⊙ 3/4" REBAR FOUND
- ⊕ HARRISON FOUND
- VINYL "T" POST

Government Land Corner Certificate

ADAMS County
 TYPE OF MONUMENT: HARRISON
 STATE PLANE COORDINATES: N _____
 E _____
 ELEVATION — M.S.L. DATUM: _____
 THETA ANGLE: _____
 FIELD BOOK: 69 PAGE 116
 DRAWN BY: L.C.

CORNER NO. 3
 SECTION 6
 TOWN 20
 RANGE 6



LOCATION
(Indicated by 'X')

BASIS FOR MONUMENT LOCATION

Show info such as: History of corner, with reference to Vol. and pg., dates, surveyor; exact description of monument replaced; if location computed, by taped or EDM traverse; landowner remarks, etc. (Use reverse side if necessary)

Found a 2" x 36" iron pipe with a crossbar through the bottom. Pipe was somewhat tipped by grader. Replaced pipe with Harrison monument. This point is on a straight line between the adjacent Wood County corners.

- Ok 5-7-84 SS-DK
- " 1-23-89 SS
- OK 3-7-94 JG-LR
- OK 2-21-99-JG
- 2-GONE 2-NEW 2-26-04-JG
- 2 NEW TIES 4-14-09 SS

SEAL:



DATA SHOWN HERE ON
CERTIFIED CORRECT:

Anthony B. Kiedrowski
Registered Land Surveyor

DATE: 6/17/81

TIE SKETCH

Show at least four ties, also fence lines, roads, topo, size and type of witness trees' and if off road - best way to arrive at corner.

