

05 SECTION 20 TOWN 06 RANGE

# ADAMS COUNTY

COUNTY CORNER NO: 5  
ROMPORTOL ID: 42006059000

## PUBLIC LAND SURVEY MONUMENT RECORD

TYPE OF MONUMENT: HARRISON (BROKEN TOP)  
ADAMS COUNTY COORDINATES, NAD 83 (2007)

N. 321625.587

E. 535835.611

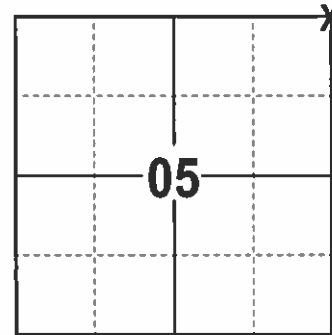
ELEVATION- --- DATUM ---

FIELD WORK DATE: 12/19/2016

### BASIS FOR MONUMENT LOCATION

1974 - PLS 1103 EXCAVATED AN EXTENSIVE AREA AND FOUND NO CONCLUSIVE EVIDENCE. SET CORNER PROPORTIONATELY IN THE EAST WEST DIRECTION AND ON LINE BETWEEN ADJACENT CORNERS.

2017 - PLS 2994 FOUND EXISTING HARRISON WITH A BROKEN TOP 18 INCHES BELOW THE ROAD SURFACE, ONE TIE AND ONE WITNESS TREE. THE HARRISON AGREES WITH THE EXISTING WITNESS TREE AND TIE. ACCEPTED HARRISON AND SET 4 NEW TIES.



LOCATION  
(INDICATE CORNER BY "X")

SEAL:

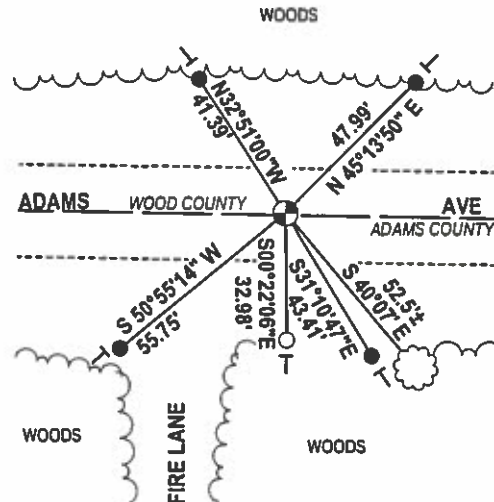
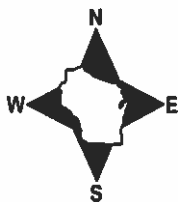


DATA SHOWN HERE ON THIS TIE SHEET IS CORRECT AND COMPLETE TO THE BEST OF MY KNOWLEDGE AND BELIEF.

PROFESSIONAL LAND SURVEYOR

DATE 2/9/17

### - TIE SKETCH



- 3/4" x 18" IRON REBAR SET, 1.50#/FT
- 1" OD IRON PIPE FOUND
- ⊙ HARRISON FOUND
- VINYL "T" POST
- ☼ WITNESS TREE FOUND

**ADAMS COUNTY**

**Survey Monument Record**

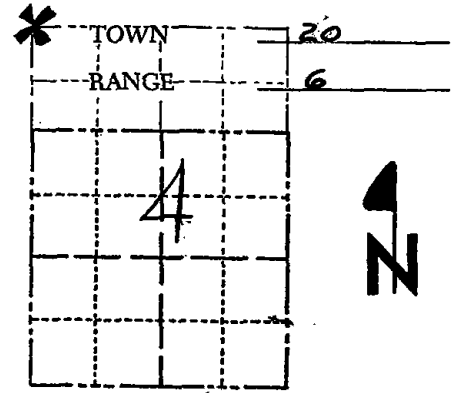
TYPE OF MONUMENT: HARRISON STANDARD  
 STATE PLANE COORDINATES: N \_\_\_\_\_  
 E \_\_\_\_\_  
 ELEVATION — M.S.L. DATUM: \_\_\_\_\_  
 THETA ANGLE: \_\_\_\_\_  
 FIELD BOOK: \_\_\_\_\_ PAGE \_\_\_\_\_

CORNER NO. 576 (5)

SECTION 4

TOWN 20

RANGE 6



LOCATION  
(Indicated by 'X')

SEAL:

**BASIS FOR MONUMENT LOCATION**

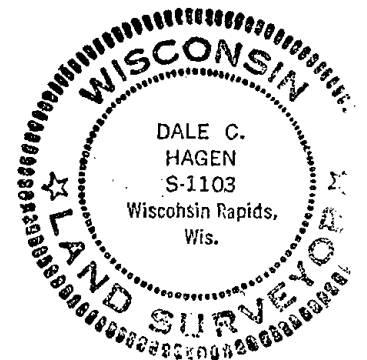
(Use reverse side if necessary)

Show info such as: History of corner, with reference to Vol. and pg, dates, surveyor; exact description of monument replaced; if location computed, by taped or EDM traverse; landowner remarks, etc.

Excavation and extensive search yielded no conclusive evidence. Set corner proportionately and on line between adjacent corners.

**Note: This corner is set on the second standard parallel, and proportioned in the east and west direction from controlling monuments on that line.**

1 new 5-11-84 SS-DK



O.K. 8-15-79 RN-RAK  
 1 NEW TIE 6-13-89 MK-SS  
 OK 3-7-99 JG-CR

CERTIFIED CORRECT:

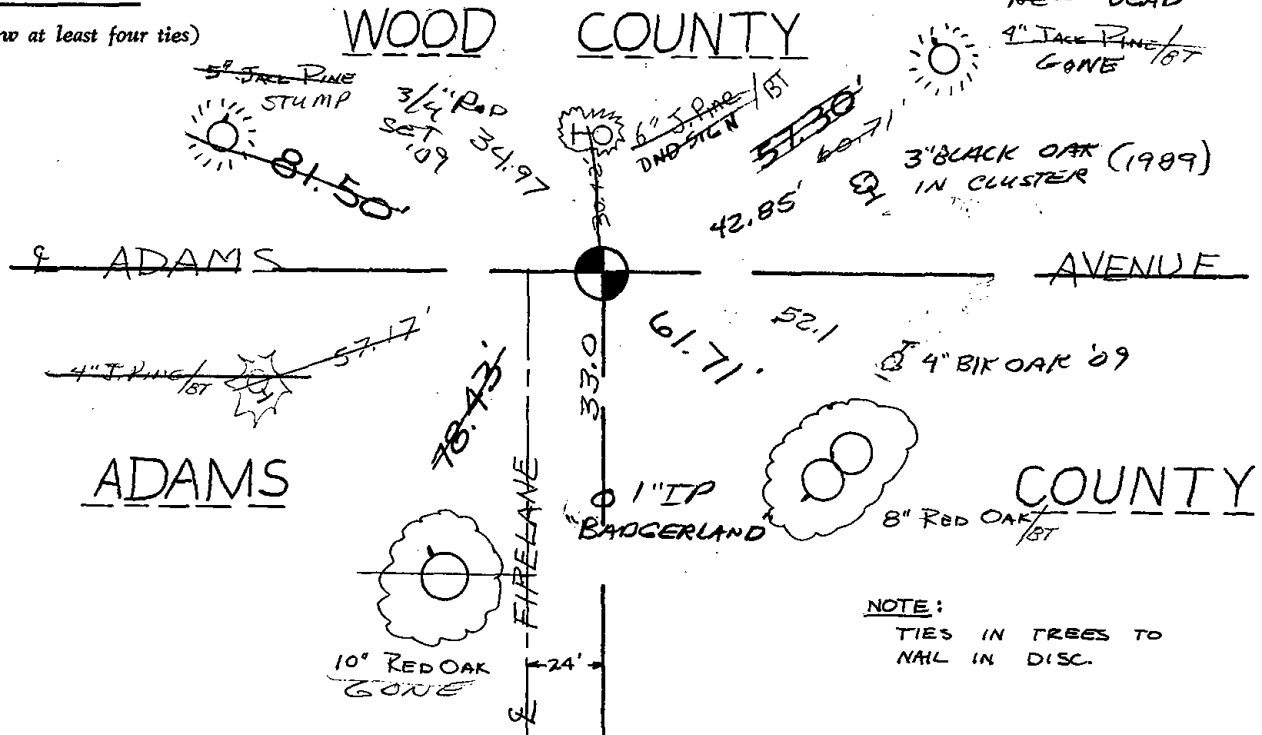
*Dale C. Hagen*  
 Registered Land Surveyor

DATE: 10-24-74

DK 2-12-99-JG  
 1-GONE, 4-LEFT, 2-27-04-JG  
 2 NEW TIES 3-13-09 SS

**TIE SKETCH**

(Show at least four ties)



**NOTE:**  
 TIES IN TREES TO  
 NAIL IN DISC.