

03 SECTION 20 TOWN 06 RANGE

ADAMS COUNTY

COUNTY CORNER NO: 9
 ROMPORTOL ID: 42006039000

PUBLIC LAND SURVEY MONUMENT RECORD

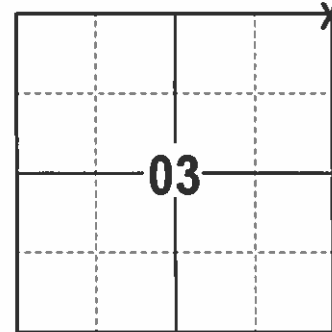
TYPE OF MONUMENT: HARRISON (BROKEN TOP)
 ADAMS COUNTY COORDINATES, NAD 83 (2007)

N. 321427.724

E. 546413.357

ELEVATION- DATUM

FIELD WORK DATE: 12/20/2016



LOCATION
 (INDICATE CORNER BY "X")

BASIS FOR MONUMENT LOCATION

1980 - PLS 878 FOUND A 2" X 34" PINCHED IRON PIPE WITH A CROSS BAR ON THE BOTTOM. REPLACED THE PIPE WITH A HARRISON AND IS ON A STRAIGHT LINE BETWEEN ADJACENT WOOD COUNTY CORNERS.

2017 - PLS 2994 FOUND EXISTING HARRISON WITH A BROKEN TOP, 2 EXISTING WITNESS TREES AND 3 EXISTING TIES. THE HARRISON AGREES WITH EXISTING WITNESS TREES AND TIES. ACCEPTED HARRISON AND SET 1 NEW TIE.

SEAL:

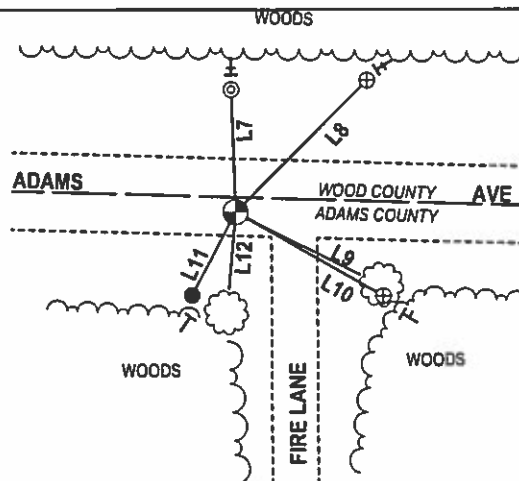
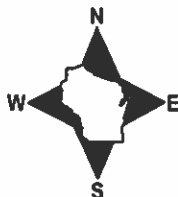


DATA SHOWN HERE ON THIS TIE SHEET IS CORRECT AND COMPLETE TO THE BEST OF MY KNOWLEDGE AND BELIEF.

PROFESSIONAL LAND SURVEYOR

DATE 2/9/17

- TIE SKETCH



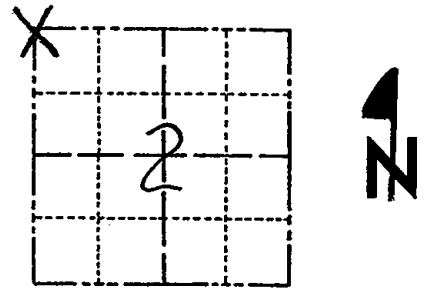
- 3/4" x 18" IRON REBAR SET, 1.50#/FT
- ⊕ 3/4" IRON REBAR FOUND
- ⊙ ALUMINUM CAPPED IRON PIPE FOUND
- ⊗ HARRISON FOUND
- ┊ VINYL "T" POST
- ⊕ EXISTING STEEL POST
- ☁ WITNESS TREE FOUND

LINE	BEARING	DISTANCE
L7	N 01°54'25" W	31.88'
L8	N 45°17'46" E	48.71'
L9	S 63°37' E	43'±
L10	S 60°42'18" E	44.48'
L11	S 27°38'08" W	24.44'
L12	S 05°02' W	26.5'±

Government Land Corner Certificate

ADAMS County
 TYPE OF MONUMENT: HARRISON
 STATE PLANE COORDINATES: N _____
 E _____
 ELEVATION — M.S.L. DATUM: _____
 THETA ANGLE: _____
 FIELD BOOK: 86 (102) PAGE 77
 DRAWN BY: NJ

CORNER NO. 9
 SECTION 2
 TOWN 20
 RANGE 6



LOCATION
 (Indicated by 'X')

BASIS FOR MONUMENT LOCATION

Show info such as: History of corner, with reference to Vol. and pg., dates, surveyor; exact description of monument replaced; if location computed, by taped or EDM traverse; landowner remarks, etc. (Use reverse side if necessary)

Found 2"x3/4" pinched 2" iron pipe with cross rods thru the bottom. Pipe was on line between found Wood County corners immediately east and west of here. Replaced pipe with Harrison monument.

No record of how pipe got there. It fell in line with stone found at NE corner.

SEAL:



Ok 7-9-84 DK-GR

DATA SHOWN HERE ON
 CERTIFIED CORRECT:

Anthony B. Kiedrowski
 Registered Land Surveyor
 11/5/80

DATE: _____

TIE SKETCH

Show at least four ties, also fence lines, roads, topo, size and type of witness trees and if off road - best way to arrive at corner.

