

02 SECTION 20 TOWN 06 RANGE

ADAMS COUNTY

COUNTY CORNER NO: 11

ROMPORTOL ID: 42006029000

PUBLIC LAND SURVEY MONUMENT RECORD

TYPE OF MONUMENT: HARRISON
 ADAMS COUNTY COORDINATES, NAD 83 (2007)

N. 321334.400

E. 551647.450

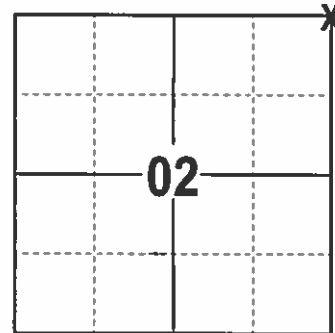
ELEVATION- DATUM

FIELD WORK DATE: 12/21/2016

BASIS FOR MONUMENT LOCATION

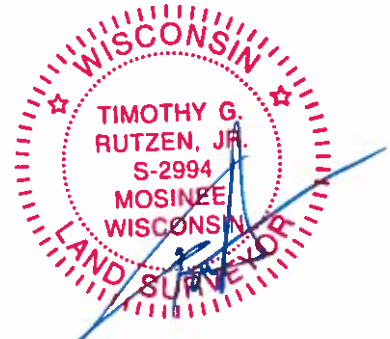
1980 - PLS 878 FOUND NO RECORD OF ANY RESURVEYS. EXCAVATED WITH A BACKHOE AND FOUND A 4"x8"x12" DUG IN SANDSTONE TIPPED. THE STONE WAS PUT ONLINE AND LOWERED AND A HARRISON WAS PLACED ON TOP.

2017 - PLS 2994 FOUND EXISTING HARRISON, 1 EXISTING IRON AND 2 WITNESS TREES. THE HARRISON AGREES WITH THE WITNESS TREES. ACCEPTED HARRISON AND SET 3 NEW TIES AND MEASURED TO THE EXISTING IRON.



LOCATION
(INDICATE CORNER BY "X")

SEAL:



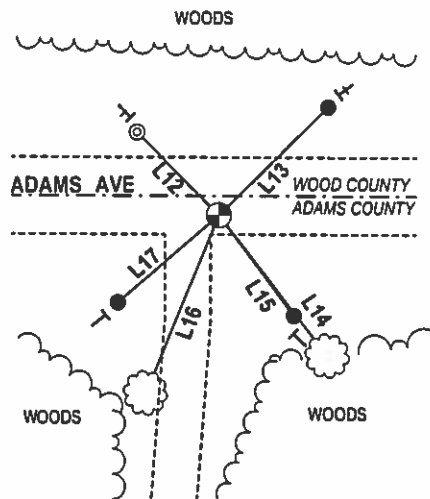
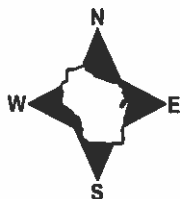
DATA SHOWN HERE ON THIS TIE SHEET IS CORRECT AND COMPLETE TO THE BEST OF MY KNOWLEDGE AND BELIEF.

PROFESSIONAL LAND SURVEYOR

DATE 2/9/17

TIE SKETCH

NOTE: THE CORNER FALLS 5± SOUTH OF THE CENTERLINE OF ADAMS AVE.



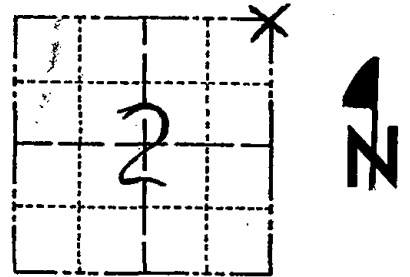
- 3/4" x 18" IRON REBAR SET, 1.50#/FT
- ⊙ 3/4" REBAR FOUND
- ⊕ HARRISON FOUND
- VINYL "T" POST
- EXISTING STEEL POST
- ☁ WITNESS TREE FOUND

LINE	BEARING	DISTANCE
L12	N 44°48'58" W	30.42'
L13	N 45°23'49" E	40.00'
L14	S 37°53' E	46.5±
L15	S 36°54'04" E	32.61'
L16	S 22°24' W	50±
L17	N 49°21'05" E	34.82'

Government Land Corner Certificate

ADAMS County
 TYPE OF MONUMENT: HARRISON
 STATE PLANE COORDINATES: N _____
 E _____
 ELEVATION — M.S.L. DATUM: _____
 THETA ANGLE: _____
 FIELD BOOK: 86 PAGE 78
 DRAWN BY: NJ

CORNER NO. 11
 SECTION 2
 TOWN 20
 RANGE 6



LOCATION
(Indicated by 'X')

BASIS FOR MONUMENT LOCATION

Show info such as: History of corner, with reference to Vol. and pg., dates, surveyor; exact description of monument replaced; if location computed, by taped or EDM traverse; landowner remarks, etc. (Use reverse side if necessary)

No record of resurveys. Excavated with backhoe, found 4 x 8 x 12" dug in sandstone. The stone was slightly south of a line between found Wood County corners immediately east and west of here. Stone was put on line, lowered, and a Harrison monument was placed on top.

1 gone 2 new 7-9-84 GR-DK

SEAL:



DATA SHOWN HERE ON
CERTIFIED CORRECT:

Anthony B. Kiedrowski
 Registered Land Surveyor
 11/5/80

DATE:

TIE SKETCH

Show at least four ties, also fence lines, roads, topo, size and type of witness trees' and if off road - best way to arrive at corner.

