

PUBLIC LAND SURVEY MONUMENT RECORD

TYPE OF MONUMENT: HARRISON (BROKEN-TOP)
ADAMS COUNTY COORDINATES, NAD 83 (2007)

N. 316631.641

E. 530544.547

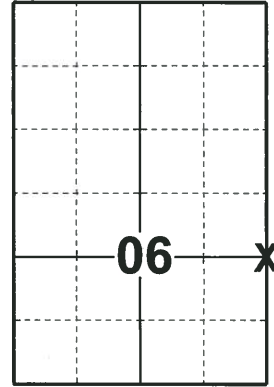
ELEVATION- DATUM

FIELD WORK DATE: 05/03/2018

BASIS FOR MONUMENT LOCATION

1987 - PLS 878 AFTER EXCAVATING WITH A BACKHOE FOUND THE BOTTOM 6" OF A 3" DIA. CHARRED WOOD STAKE. REPLACED IT WITH A HARRISON MONUMENT AND TIED OUT. VERIFIED LOCATION BY EDM TRAVERSE.

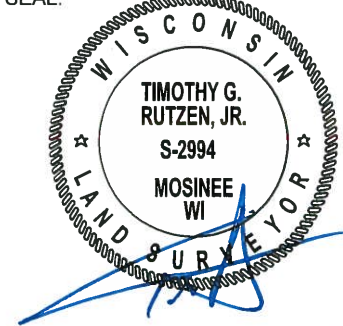
2018 - PLS 2994 FOUND A HARRISON MONUMENT WITH A BROKEN-TOP 24" BELOW THE ROAD SURFACE AND 1 TIE. THE MONUMENT AGREES WITH THE EXISTING TIE. ACCEPTED THE HARRISON MONUMENT WITH A BROKEN-TOP AS THE CORNER LOCATION. SET 3 NEW TIES AND MEASURED TO THE TIES.



LOCATION

(INDICATE CORNER BY "X")

SEAL:



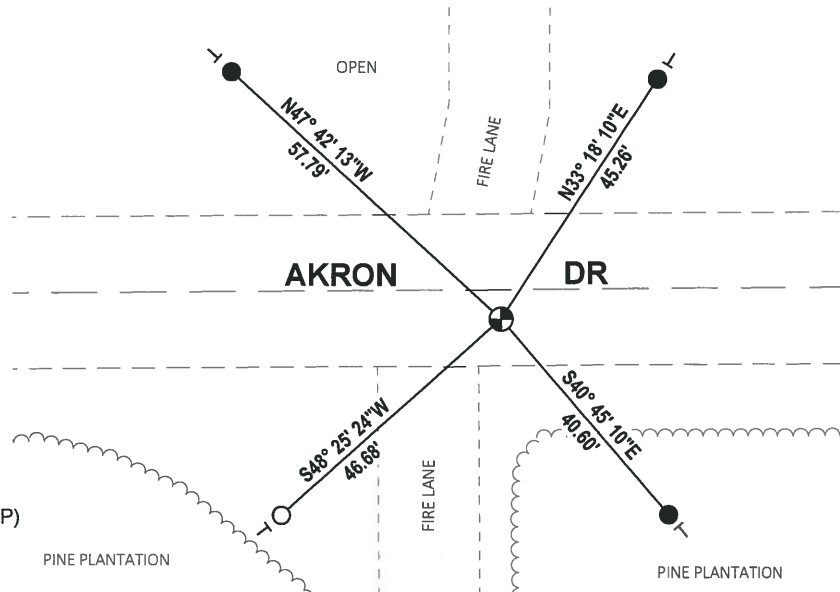
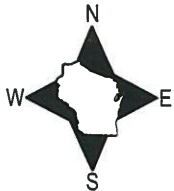
DATA SHOWN HERE ON THIS TIE SHEET IS CORRECT AND COMPLETE TO THE BEST OF MY KNOWLEDGE AND BELIEF.

PROFESSIONAL LAND SURVEYOR

DATE 7-19-18

- TIE SKETCH

NOTE: THE CORNER FALLS 5± SOUTH OF THE CENTERLINE OF AKRON DR AND 9± EAST OF THE TRAIL TO THE SOUTH.

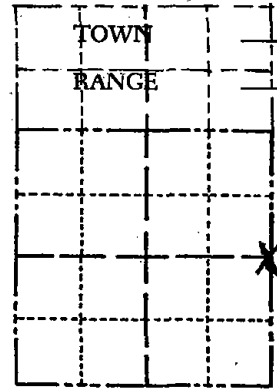


- SET 3/4" x 18" IRON REBAR, 1.50#/FT
- FOUND 3/4" IRON ROD
- ⊕ FOUND HARRISON MONUMENT(BROKEN-TOP)
- | VINYL "T" POST

Government Land Corner Certificate

ADAMS County
 TYPE OF MONUMENT: HARRISON
 STATE PLANE COORDINATES: N _____
 E _____
 ELEVATION — M.S.L. DATUM: _____
 THETA ANGLE: _____
 FIELD BOOK: 69 (102) PAGE 114 (109)
 DRAWN BY: L.C.

CORNER NO. 15
 SECTION 6
 TOWN 20
 RANGE 6



LOCATION
 (Indicated by 'X')

SEAL:



DATA SHOWN HERE ON
 CERTIFIED CORRECT:

Anthony B. Kiedrowski
 Registered Land Surveyor

DATE: 5/22/81

BASIS FOR MONUMENT LOCATION

Show info such as: History of corner, with reference to Vol. and pg., dates, surveyor; exact description of monument replaced; if location computed, by taped or EDM traverse; landowner remarks, etc. (Use reverse side if necessary)

Excavated with backhoe. Found bottom 6" of 3" dia charred wood stake. Replaced it with Harrison monument. Location verified by EDM traverse.

- ok, 5-7-84 SS-DK
- " 1-23-89 SS
- OK 3-7-94 GR-JC
- 1-GONE, 1-NEW 1-21-99 JG-DR
- 2-GONE, 2-NEW, 2-27-04-JC

NOTE: (CORNER BROKEN OFF 2'± DEEP, SET R.R. SPIKE ABOVE CORNER, 3"± BELOW BLACK TOP)
 FO RR SP - 2 REMAINING TIES MATCH
 TOOK 2 NEW TIES 07-10-09 SS

TIE SKETCH

Show at least four ties, also fence lines, roads, topo, size and type of witness trees and if off road - best way to arrive at corner.

