

04
SECTION

20
TOWN

06
RANGE

ADAMS COUNTY

COUNTY CORNER NO: 17

ROMPORTOL ID: 42006042000

PUBLIC LAND SURVEY MONUMENT RECORD

TYPE OF MONUMENT: HARRISON (BROKEN-TOP)
ADAMS COUNTY COORDINATES, NAD 83 (2007)

N. 316732.247

E. 541161.815

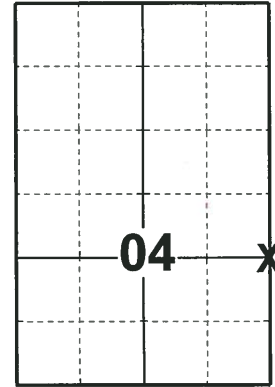
ELEVATION- DATUM

FIELD WORK DATE: 05/01/2018

BASIS FOR MONUMENT LOCATION

1974 - PLS 878 EXCAVATED WITH A BACKHOE AND FOUND A 2"x6"x15" POINTED SANDSTONE. LOWERED THE SANDSTONE AND SET A HARRISON ON TOP AND TIED OUT CORNER.

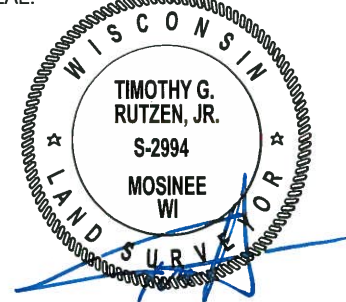
2018 - PLS 2994 FOUND A HARRISON MONUMENT WITH A BROKEN-TOP 18" BELOW THE ROAD SURFACE. FOUND NO EVIDENCE OF ANY OF THE TIES OR WITNESSES. ACCEPTED THE HARRISON MONUMENT AS THE BEST EVIDENCE OF THE CORNER LOCATION. SET 4 NEW TIES AND MEASURED TO THE TIES.



LOCATION

(INDICATE CORNER BY "X")

SEAL:



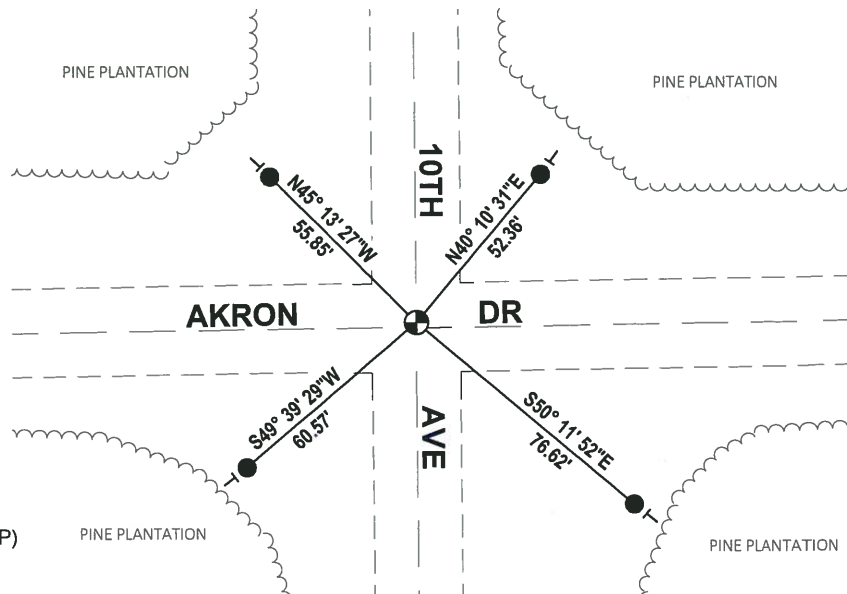
DATA SHOWN HERE ON THIS TIE SHEET IS CORRECT AND COMPLETE TO THE BEST OF MY KNOWLEDGE AND BELIEF.

PROFESSIONAL LAND SURVEYOR

DATE 7-18-18

- TIE SKETCH -

NOTE: THE CORNER FALLS 2'± NORTH OF THE CENTERLINE OF AKRON DR AND 0.5'± WEST OF THE CENTERLINE OF 10TH AVE.



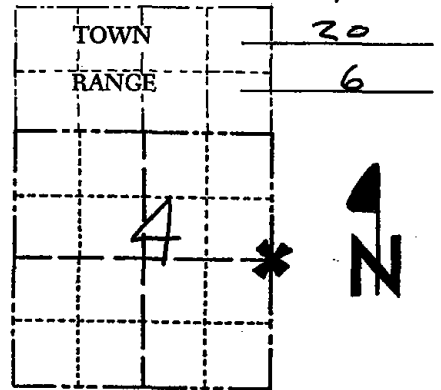
- SET 3/4" x 18" IRON REBAR, 1.50#/FT
- ⊕ FOUND HARRISON MONUMENT (BROKEN-TOP)
- VINYL "T" POST

ADAMS COUNTY

Survey Monument Record

TYPE OF MONUMENT: Harrison standard
 STATE PLANE COORDINATES: N _____
 E _____
 ELEVATION — M.S.L. DATUM: _____
 THETA ANGLE: _____
 FIELD BOOK: 30 PAGE 18

CORNER NO. 579
 SECTION 4
 TOWN 20
 RANGE 6



LOCATION
 (Indicated by 'X')

SEAL:



BASIS FOR MONUMENT LOCATION

(Use reverse side if necessary)

Show info such as: History of corner, with reference to Vol. and pg, dates, surveyor; exact description of monument replaced; if location computed, by taped or EDM traverse; landowner remarks, etc.

Excavated with backhoe, found
 2"x6"x15" Pointed sandstone. Lowered stone
 and set Harrison on top.

MON. O.K. - RN-RAK 8-15-79
 NO TIES AVAILABLE

OK 4-23-84 DK

1-GONE 3-7-94 GR-JG

OK 2-12-99 JG

OK 2-26-04 JG
 2 NEW TIES 3-13-09 SS

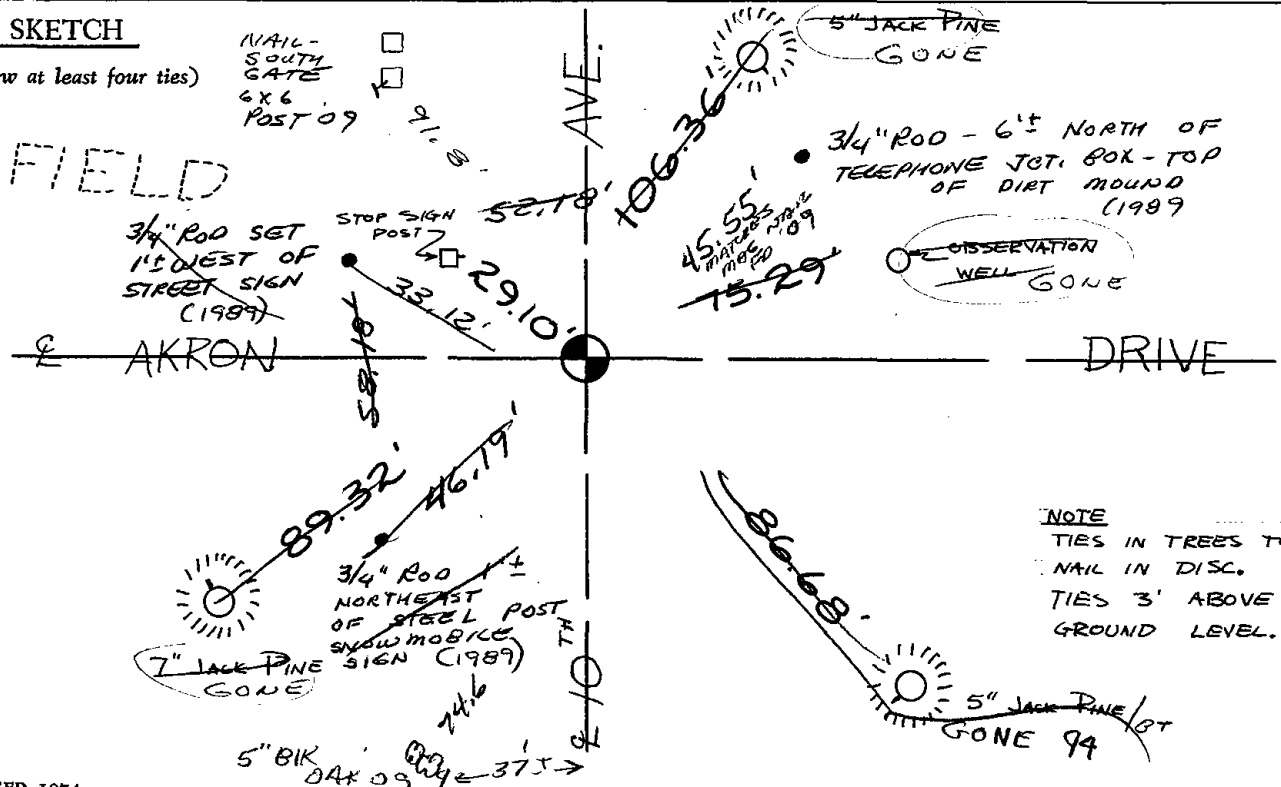
CERTIFIED CORRECT:

Anthony B. Kiedrowski
 Registered Land Surveyor

DATE: 10/21/74

TIE SKETCH

(Show at least four ties)



NOTE
 TIES IN TREES TO
 NAIL IN DISC.
 TIES 3' ABOVE
 GROUND LEVEL.