

## PUBLIC LAND SURVEY MONUMENT RECORD

TYPE OF MONUMENT: HARRISON (BROKEN-TOP)  
 ADAMS COUNTY COORDINATES, NAD 83 (2007)

N. 319469.945

E. 546421.689

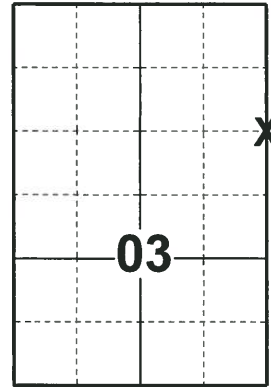
ELEVATION-      DATUM     

FIELD WORK DATE: 05/01/2018

### BASIS FOR MONUMENT LOCATION

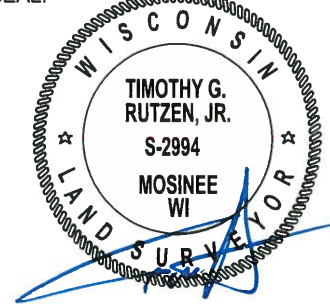
1981 - PLS 878 SCRAPED THE AREA WITH FRONT END BUCKET AND FOUND A 6"x6"x18" SQUARED SANDSTONE NEXT TO THE REMAINS OF A 6" DIAMETER FENCE POST THAT WAS COMPLETELY ROTTEN. ACCEPTED THE STONE AS THE CORNER AND REPLACED IT WITH A HARRISON MONUMENT AND TIED OUT. PLACED THE STONE IN THE GROUND IMMEDIATELY NORTH OF THE HARRISON. FOUND NO RECORD OF THE STONE. VERIFIED THE LOCATION BY EDM T-2 TRAVERSE OF THE AREA.

2018 - PLS 2994 FOUND A HARRISON MONUMENT WITH A BROKEN-TOP 12" BELOW THE GROUND SURFACE AND 3 TIES. THE MONUMENT AGREES WITH THE EXISTING TIES. ACCEPTED THE HARRISON MONUMENT WITH A BROKEN-TOP AS THE CORNER LOCATION. SET 1 NEW TIE AND MEASURED TO THE TIES.



**LOCATION**  
 (INDICATE CORNER BY "X")

SEAL:



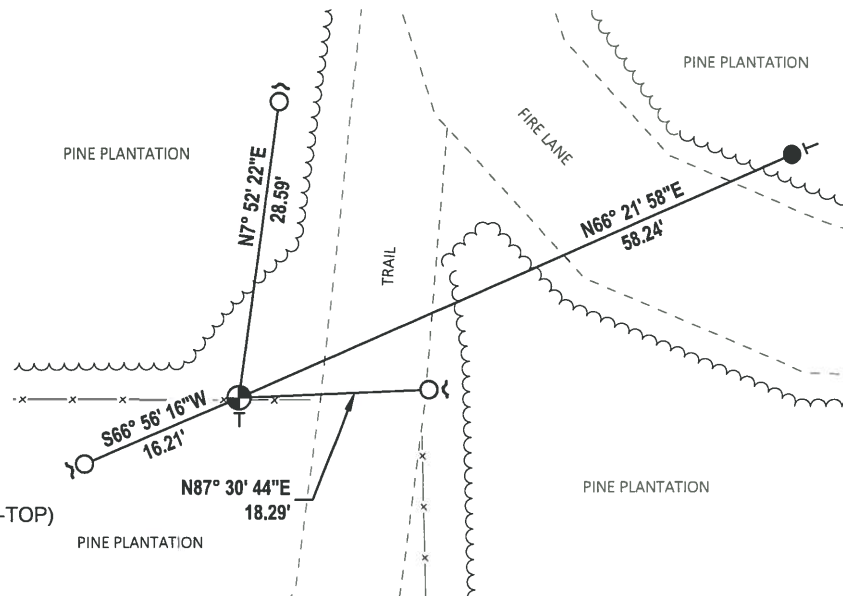
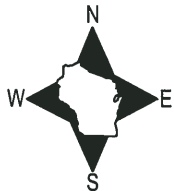
DATA SHOWN HERE ON THIS TIE SHEET IS CORRECT AND COMPLETE TO THE BEST OF MY KNOWLEDGE AND BELIEF.

PROFESSIONAL LAND SURVEYOR

DATE 7-18-18

### - TIE SKETCH

NOTE: THE CORNER FALLS 13'± WEST OF THE CENTERLINE OF THE TRAIL AND 0.5'± NORTH OF THE FENCE LINE.



- SET 3/4" x 18" IRON REBAR, 1.50#/FT
- FOUND 3/4" IRON ROD W/ALUMINUM CAP
- ⊕ FOUND HARRISON MONUMENT (BROKEN-TOP)
- ~ STEEL FENCE POST
- VINYL "T" POST