

01
SECTION

20
TOWN

06
RANGE

ADAMS COUNTY

COUNTY CORNER NO: 20

ROMPORTOL ID: 42006012000

PUBLIC LAND SURVEY MONUMENT RECORD

TYPE OF MONUMENT: CALCULATED POSITION
ADAMS COUNTY COORDINATES, NAD 83 (2007)

N. 316796.657

E. 557057.928

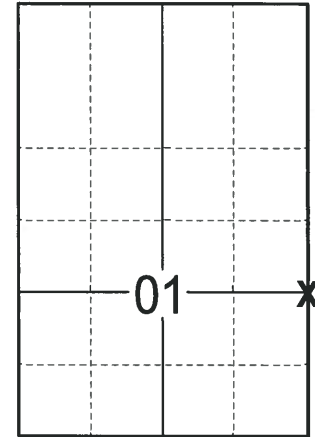
ELEVATION- DATUM

FIELD WORK DATE: 02/06/2018

BASIS FOR MONUMENT LOCATION

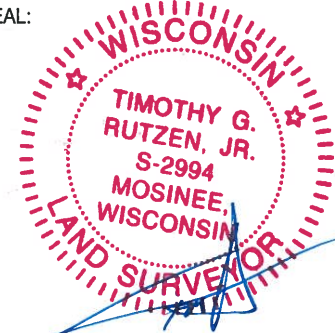
1981 - PLS 878 NO RECORD OF ANY RESURVEYS. ANY MONUMENTATION WAS OBVIOUSLY DESTROYED BY DITCH CONSTRUCTION. THIS CORNER WAS SET ON A STRAIGHT LINE BETWEEN SECTION CORNERS AND IN PROPORTION TO THE ORIGINAL NOTES. SET A HARRISON MONUMENT AND TIED OUT.

2018 - PLS 2994 FOUND 2 TIES AND 1 WITNESS TREE. THE CORNER WAS CALCULATED BY HOLDING THE LINE FROM THE CALCULATED SE CORNER OF SECTION 1 AND THE FOUND TIE THAT IS NOTED TO BE ON THE SECTION LINE. THE RECORD DISTANCE AS SHOWN ON PRIOR TIESHEET OF 28.71 WAS THEN EXTENDED NORTH TO ESTABLISH POSITION. THIS WAS THEN CHECKED TO THE FOUND WITNESS TREE AND OTHER TIE AND MATCHED WELL. ACCEPTED AS BEST AVAILABLE EVIDENCE AND METHOD TO ESTABLISH THE CORNER LOCATION. SET 2 NEW TIES AND MEASURED TO THE TIES AND WITNESS TREE.



LOCATION
(INDICATE CORNER BY "X")

SEAL:



DATA SHOWN HERE ON THIS TIE SHEET IS CORRECT AND COMPLETE TO THE BEST OF MY KNOWLEDGE AND BELIEF.

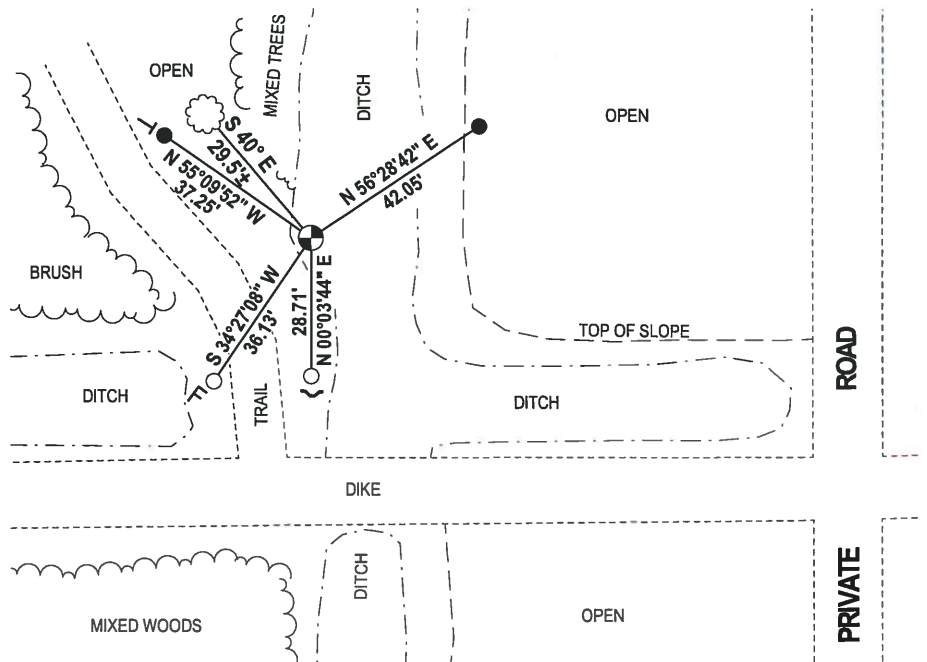
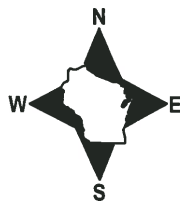
PROFESSIONAL LAND SURVEYOR

DATE 3-1-18

- TIE SKETCH

NOTE 1: THE CORNER FALLS IN THE DRAINAGE DITCH NO MONUMENT WAS SET.

NOTE 2: FOR ACCESS COME FROM THE NORTH OFF STH 73 THROUGH CRANBERRY FARM.



- 3/4" IRON REBAR FOUND
- 3/4" x 18" IRON REBAR SET, 1.50#/FT
- ⊙ CALCULATED POSITION
- ├ VINYL "T" POST
- ~ EXISTING STEEL FENCE POST
- ⌢ EXISTING FIBERGLASS WITNESS POST
- ☁ FOUND WITNESS TREE

Government Land Corner Certificate

ADAMS County

TYPE OF MONUMENT: WITNESS HARRISON

STATE PLANE COORDINATES: N _____
E _____

ELEVATION — M.S.L. DATUM: _____

THETA ANGLE: _____

FIELD BOOK: 86 PAGE 98

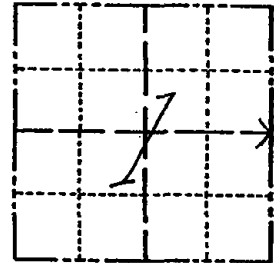
DRAWN BY: NJ

CORNER NO. 20

SECTION 1

TOWN 20

RANGE 6



LOCATION
(Indicated by 'X')

BASIS FOR MONUMENT LOCATION

Show info such as: History of corner, with reference to Vol. and pg., dates, surveyor; exact description of monument replaced; if location computed, by taped or EDM traverse; landowner remarks, etc. (Use reverse side if necessary)

No record of any resurveys. Any monument obviously destroyed by ditch construction. This corner set on a straight line between section corners and in proportion to the original notes.

Ok 7-9-84 DK-GR

SEAL:



DATA SHOWN HERE ON
CERTIFIED CORRECT:

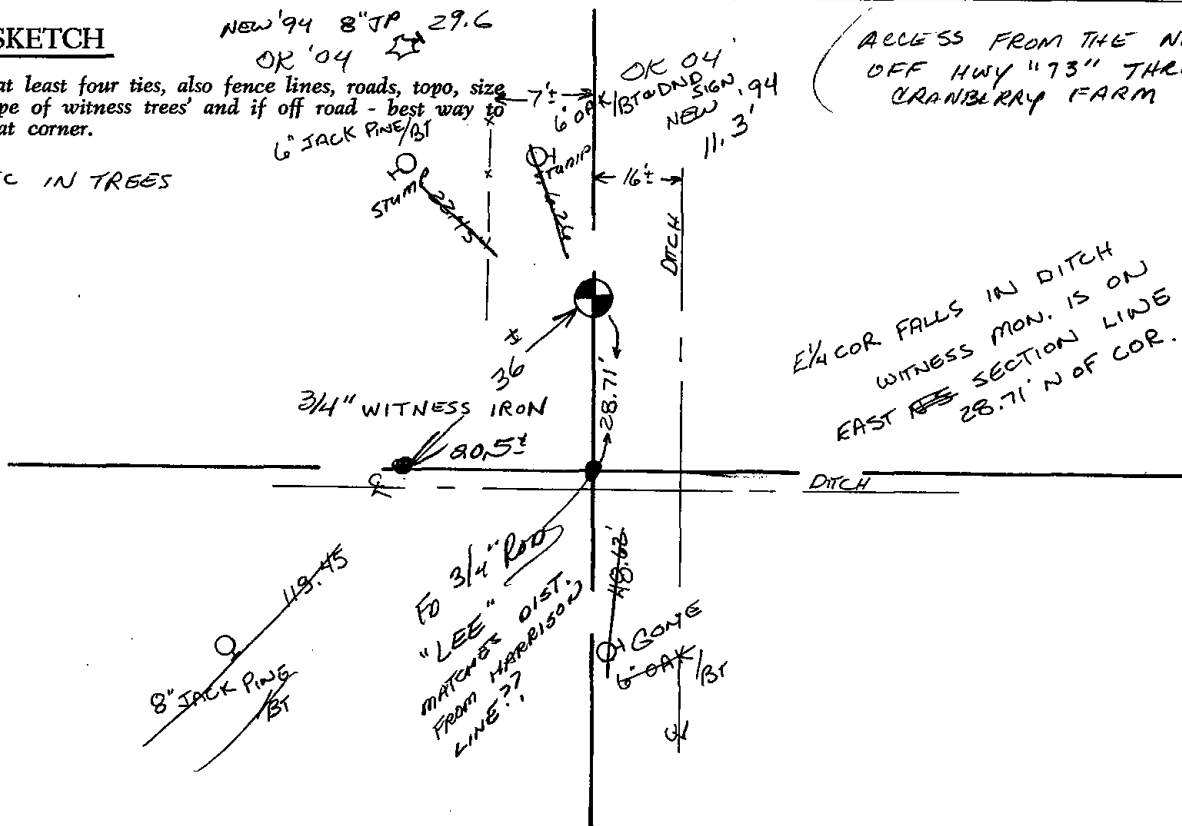
Anthony B. Kiedrowski
Registered Land Surveyor

DATE: 1/5/81

TIE SKETCH

Show at least four ties, also fence lines, roads, topo, size and type of witness trees and if off road - best way to arrive at corner.

NAIL & DISC IN TREES



ACCESS FROM THE NORTH
OFF HWY "73" THROUGH
CRANBERRY FARM

E 1/4 COR FALLS IN DITCH
WITNESS MON. IS ON
EAST SECTION LINE
28.71' N OF COR.

