

PUBLIC LAND SURVEY MONUMENT RECORD

TYPE OF MONUMENT: HARRISON
 ADAMS COUNTY COORDINATES, NAD 83 (2007)

N. 314000.714

E. 533203.624

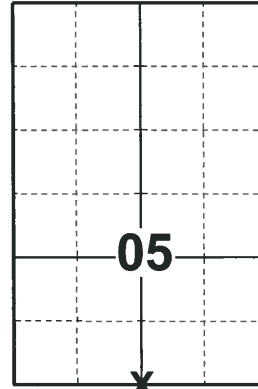
ELEVATION- - - - - DATUM - - - - -

FIELD WORK DATE: 05/02/2018

BASIS FOR MONUMENT LOCATION

1974 - PLS 841 NO ORIGINAL OR RECORD EVIDENCE FOUND AT THE CORNER LOCATION. CORNER WAS SET BY PROPORTIONAL MEASUREMENT BASED ON EDM TRAVERSE OF SECTION 8. SET A STANDARD 30" C.I. HARRISON AT THE CORNER AND TIED OUT CORNER.

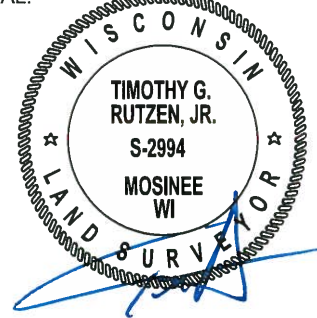
2018 - PLS 2994 FOUND A HARRISON MONUMENT FLUSH WITH THE GROUND SURFACE. FOUND NO EVIDENCE OF ANY OF THE WITNESSES. ACCEPTED THE HARRISON MONUMENT AS THE BEST EVIDENCE OF THE CORNER LOCATION. SET 4 NEW TIES AND MEASURED TO THE TIES.



LOCATION

(INDICATE CORNER BY "X")

SEAL:



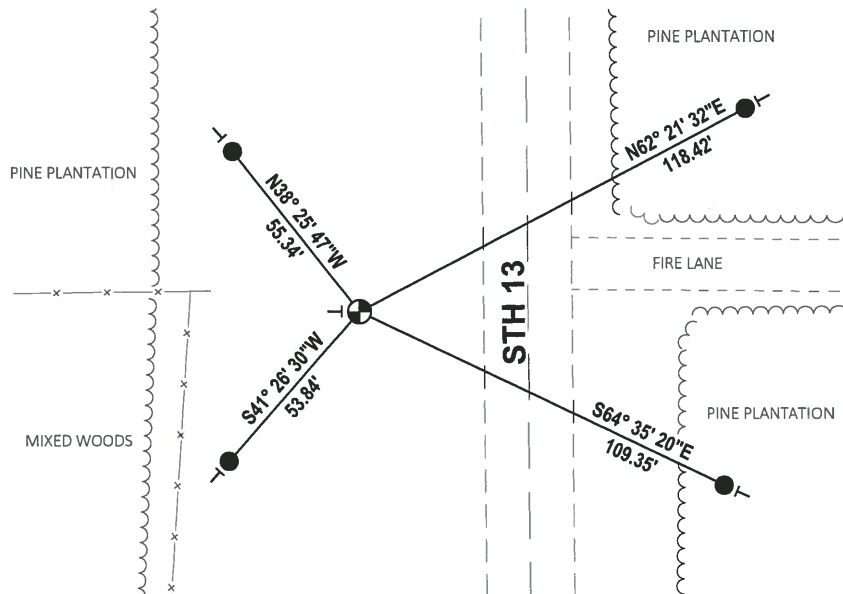
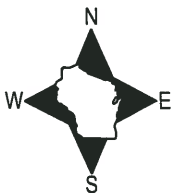
DATA SHOWN HERE ON THIS TIE SHEET IS CORRECT AND COMPLETE TO THE BEST OF MY KNOWLEDGE AND BELIEF.

PROFESSIONAL LAND SURVEYOR

DATE 7-18-18

TIE SKETCH

NOTE: THE CORNER FALLS 46'± WEST OF THE CENTERLINE OF STH 13.



- SET 3/4" x 18" IRON REBAR, 1.50#/FT
- ⊕ FOUND HARRISON MONUMENT
- | VINYL "T" POST

ADAMS COUNTY

CORNER NO. 582

Survey Monument Record HARRISON MONUMENT

SECTION 8

TYPE OF MONUMENT: NORTH 1/4 CORNER

TOWN ZON.

STATE PLANE COORDINATES: N _____

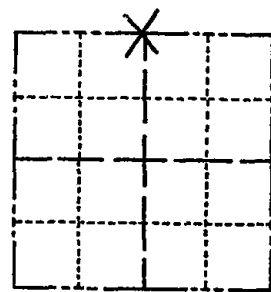
RANGE 6E.

E _____

ELEVATION — M.S.L. DATUM: _____

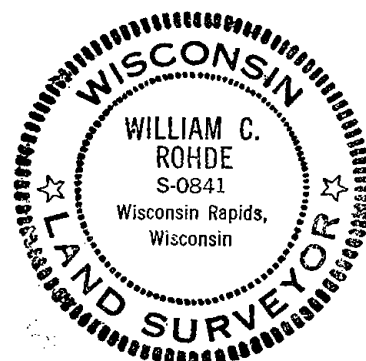
THETA ANGLE: _____

FIELD BOOK: _____ PAGE _____



LOCATION (Indicated by 'X')

SEAL:



BASIS FOR MONUMENT LOCATION

(Use reverse side if necessary)

Show info such as: History of corner, with reference to Vol. and pg, dates, surveyor; exact description of monument replaced; if location computed, by taped or EDM traverse; landowner remarks, etc.

NO ORIGINAL OR RECORD EVIDENCE FOUND AT CORNER. CORNER SET BY PROPORTIONAL MEASUREMENT BASED ON EDM TRAVERSE OF SECTION. STD 30" C.I. HARRISON MONUMENT SET @ CORNER.

Ok 5-7-84 SS-DK

OK 6-7-79 RN-RW

1 NEW TIE 4-11-89

OK 3-7-94 JG-GR

CERTIFIED CORRECT:

William C. Rohde

Registered Land Surveyor

DATE: 10/30/74

TIE SKETCH

1-11-10 HAR. OK - SET POST/SIGN SS

(Show at least four ties)

