

04
SECTION

20
TOWN

06
RANGE

ADAMS COUNTY

COUNTY CORNER NO: 26

ROMPORTOL ID: 42006040020

PUBLIC LAND SURVEY MONUMENT RECORD

TYPE OF MONUMENT: HARRISON (BROKEN-TOP)
ADAMS COUNTY COORDINATES, NAD 83 (2007)

N. 314049.672

E. 538536.103

ELEVATION- DATUM

FIELD WORK DATE: 05/02/2018

BASIS FOR MONUMENT LOCATION

1974 - PLS 878 EXCAVATED WITH A BACKHOE AND FOUND THE BOTTOM 12" OF A VERY OLD 4" DIA. WOOD POST, WHICH APPEARS TO BE CEDAR. SET A HARRISON MONUMENT AT THE CORNER LOCATION AND TIED OUT.

1983 - PLS (UNKNOWN) SET 3 NEW TIES AT THE CORNER LOCATION.

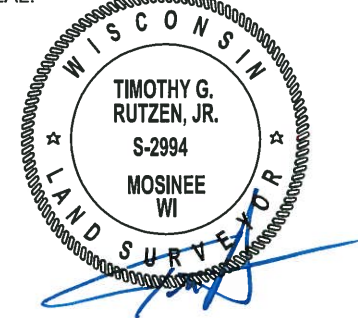
2018 - PLS 2994 FOUND A HARRISON MONUMENT WITH A BROKEN-TOP 4" BELOW THE SURFACE. FOUND NO EVIDENCE OF ANY OF THE WITNESSES. ACCEPTED THE HARRISON MONUMENT WITH A BROKEN-TOP AS THE BEST EVIDENCE OF THE CORNER LOCATION. SET 4 NEW TIES AND MEASURED TO THE TIES.



LOCATION

(INDICATE CORNER BY "X")

SEAL:

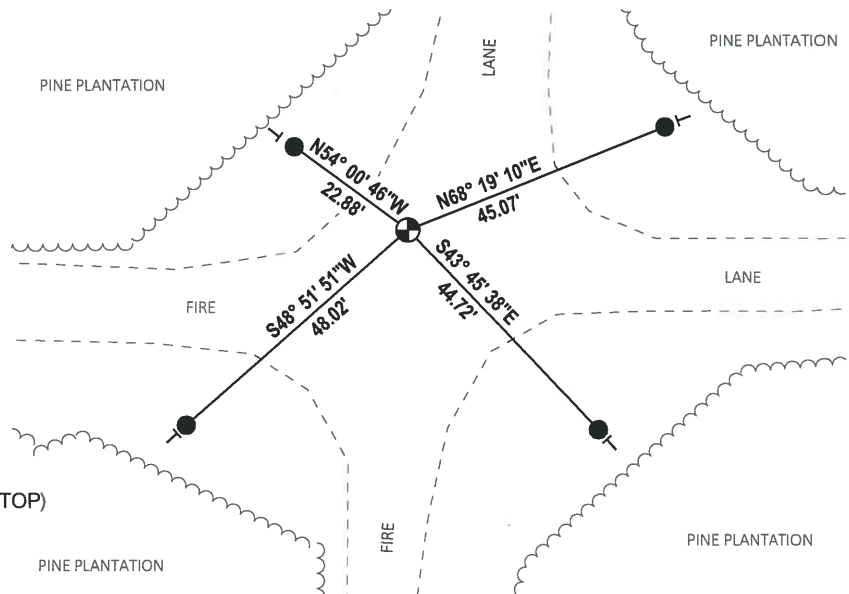


DATA SHOWN HERE ON THIS TIE SHEET IS CORRECT AND COMPLETE TO THE BEST OF MY KNOWLEDGE AND BELIEF.

PROFESSIONAL LAND SURVEYOR

DATE 7-18-18

- TIE SKETCH



- SET 3/4" x 18" IRON REBAR, 1.50#/FT
- ⊕ FOUND HARRISON MONUMENT (BROKEN-TOP)
- ┊ VINYL "T" POST

ADAMS COUNTY

Survey Monument Record

TYPE OF MONUMENT: Harrison standard

STATE PLANE COORDINATES: N _____

E _____

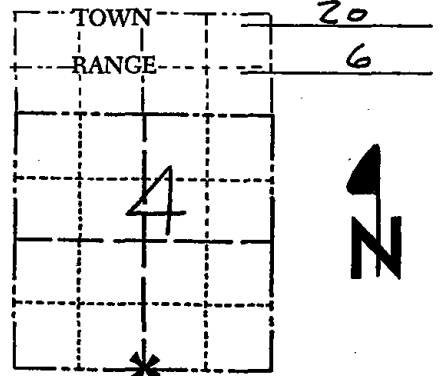
ELEVATION — M.S.L. DATUM: _____

THETA ANGLE: _____

FIELD BOOK: _____ PAGE _____

CORNER NO. 578 (26)

SECTION 4



LOCATION
(Indicated by 'X')

SEAL:



BASIS FOR MONUMENT LOCATION

(Use reverse side if necessary)

Show info such as: History of corner, with reference to Vol. and pg, dates, surveyor; exact description of monument replaced; if location computed, by taped or EDM traverse; landowner remarks, etc.

Excavated with backhoe, found bottom 12" of very old 4" dia. wood post, appears to be cedar. *Monumenta found*

3 new ties set on 7-16-83 New map found on the reverse side of this sheet

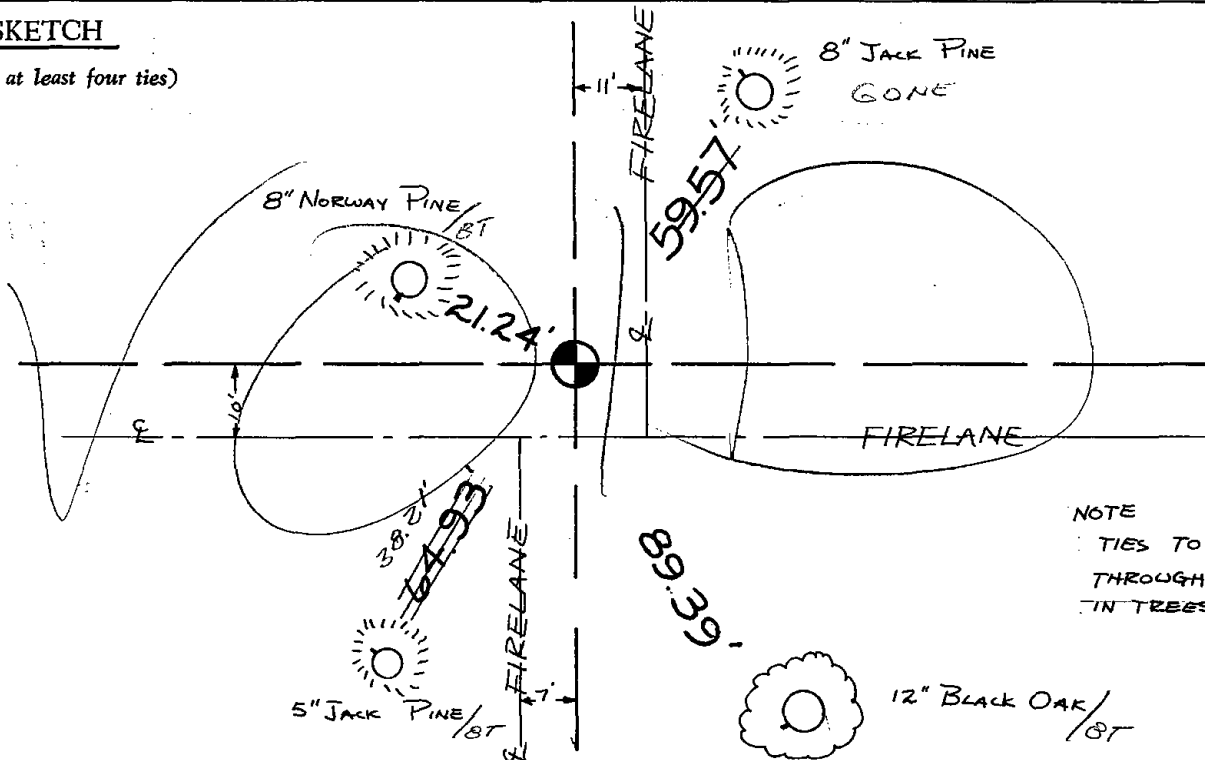
OK 6-7-79 RN-RW

CERTIFIED CORRECT:

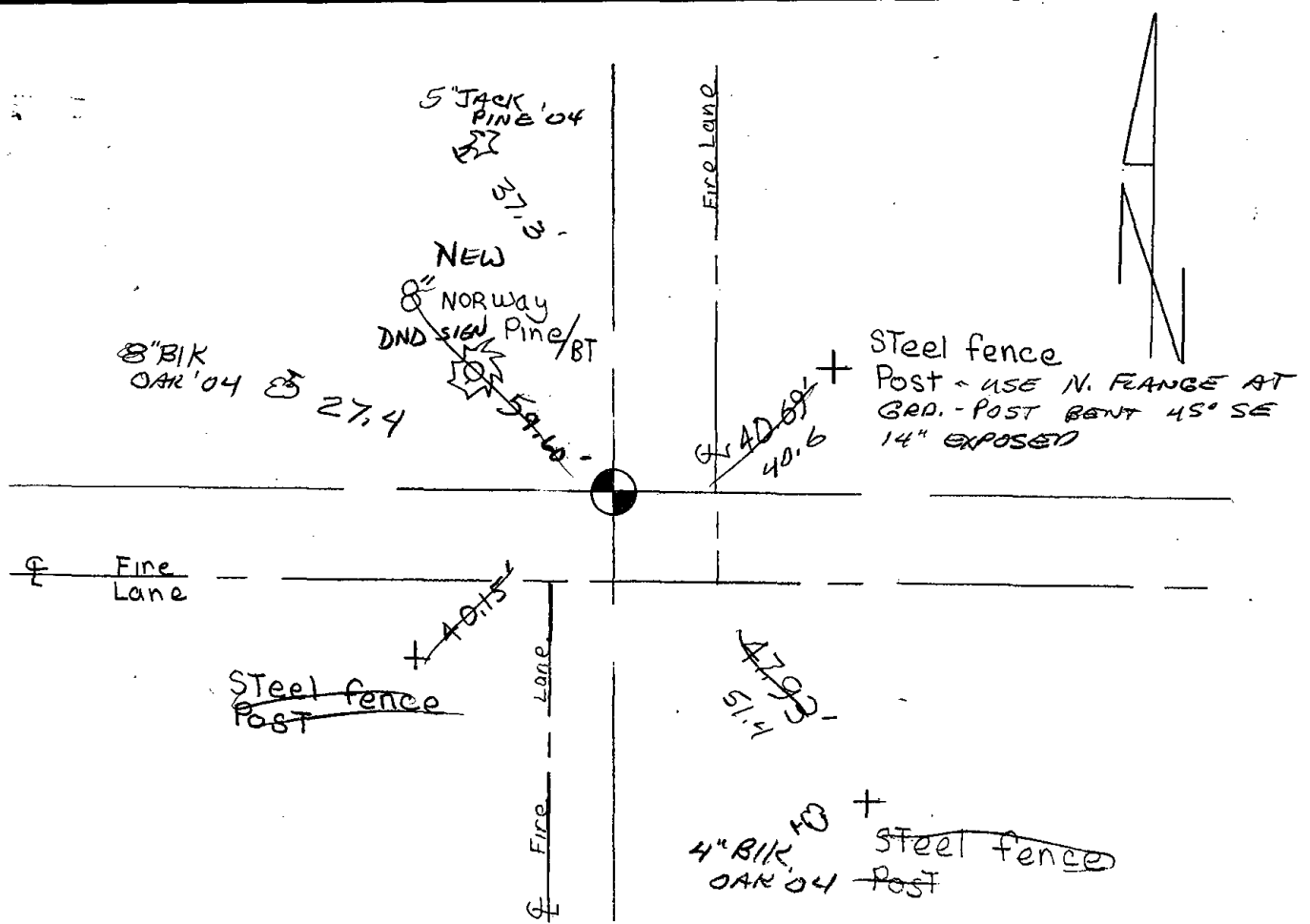
Anthony B. Kiedrowski
Registered Land Surveyor
DATE: 10/21/74

TIE SKETCH

(Show at least four ties)



NOTE
TIES TO NAIL
THROUGH DISC
IN TREES.



3 new ties 7-16-84 DK-MK

OK 2-23-89 SS

1-GONE, 1-NEW 3-7-99 JG-GR

2-24-99-JG

6-30-04 ALL POSTS FD. DISTURBED - ALL NEW TIES SS
TOP OF MOD. BROKEN - REMAINDER IN PLACE

TIES OK 3-13-09 SS