

04
SECTION

20
TOWN

06
RANGE

ADAMS COUNTY

COUNTY CORNER NO: 27

ROMPORTOL ID: 42006040000

PUBLIC LAND SURVEY MONUMENT RECORD

TYPE OF MONUMENT: HARRISON (BROKEN-TOP)
ADAMS COUNTY COORDINATES, NAD 83 (2007)

N. 314099.136

E. 541164.021

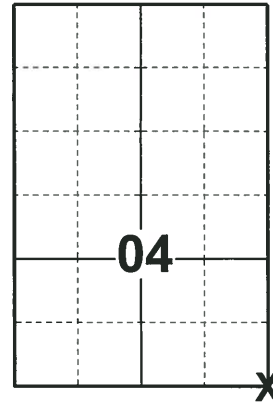
ELEVATION- DATUM

FIELD WORK DATE: 05/02/2018

BASIS FOR MONUMENT LOCATION

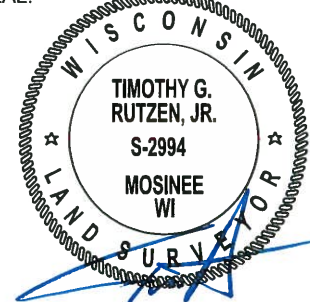
1980 - PLS 841 CORNER LOCATION ESTABLISHED USING THE INTERSECTION OF THE NORTH/SOUTH SECTION LINE AND FOUND EXISTING MONUMENTS FROM THE DUNDEE ADDITION AND WELLINGTON ADDITION PLATS OF RECORD, ALONG WITH EAST/WEST SECTION LINES ESTABLISHED BY WAYNE BASLER, PLS 1167. ALL IN ACCORDANCE AND MUTUAL AGREEMENT WITH ANTHONY B. KIEDROWSKI, PLS 878, ADAMS COUNTY SURVEYOR. EXCAVATED 10'x20' AREA AND FOUND NOTHING. SET A 8" SPIKE AND DISK AT CALCULATED LOCATION AND TIED OUT.

2018 - PLS 2994 FOUND A HARRISON MONUMENT WITH A BROKEN-TOP 18" BELOW THE ROAD SURFACE, 2 TIES AND 1 WITNESS. THE MONUMENT AGREES WITH THE EXISTING TIES AND WITNESS. ACCEPTED THE HARRISON MONUMENT WITH A BROKEN-TOP AS THE CORNER LOCATION. SET 2 NEW TIES AND MEASURED TO THE TIES AND WITNESS.



LOCATION
(INDICATE CORNER BY "X")

SEAL:



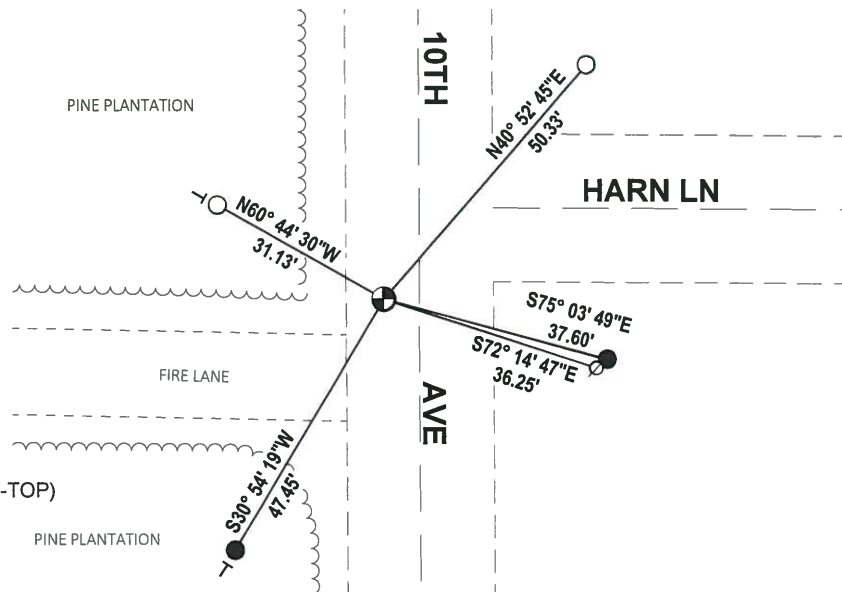
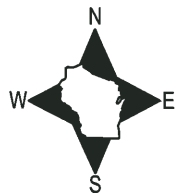
DATA SHOWN HERE ON THIS TIE SHEET IS CORRECT AND COMPLETE TO THE BEST OF MY KNOWLEDGE AND BELIEF.

PROFESSIONAL LAND SURVEYOR

DATE 7-18-18

- TIE SKETCH -

NOTE: THE CORNER FALLS 6'± WEST OF THE CENTERLINE OF 10TH AVE AND 15'± SOUTH OF THE CENTERLINE OF HARN LN.



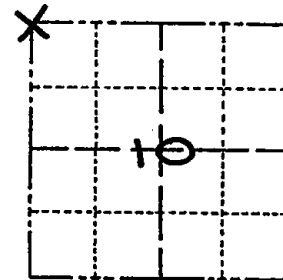
- SET 3/4" x 18" IRON REBAR, 1.50#/FT
- FOUND 3/4" IRON ROD
- ⊕ FOUND HARRISON MONUMENT (BROKEN-TOP)
- ∅ WITNESS POWER POLE
- VINYL "T" POST

Government Land Corner Certificate

MON, SET - 6/1/80
5/2/80

CORNER NO. 27
SECTION 10
TOWN 20N.
RANGE 6E.

ADAMS County
TYPE OF MONUMENT: 8" SPIKE & DISC SET.
STATE PLANE COORDINATES: N
E
ELEVATION — M.S.L. DATUM:
THETA ANGLE:
FIELD BOOK: PAGE
DRAWN BY: W. ROHDE



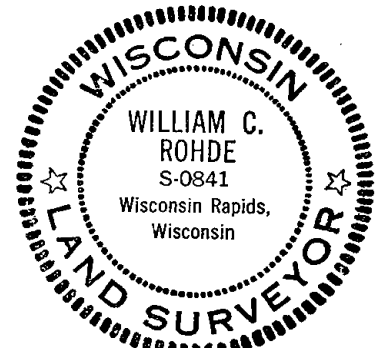
LOCATION
(Indicated by 'X')

BASIS FOR MONUMENT LOCATION

Show info such as: History of corner, with reference to Vol. and pg., dates, surveyor; exact description of monument replaced; if location computed, by taped or EDM traverse; landowner remarks, etc. (Use reverse side if necessary)

CORNER LOCATION SET BY THE INTERSECTION OF A SECTION LINE, NORTH/SOUTH, USING EXISTING MONUMENTS FOUND SOUTH OF CTH'D', FOR DUNDEE ADDITION & WELLINGTON ADDITION PLATS OF RECORD, WITH EAST/WEST SECTION LINE ESTABLISHED BY WAYNE BASLER, RLS 1167; ALL IN ACCORDANCE WITH MUTUAL AGREEMENT BY ANTHONY B. KIBROWSKI, RLS 878, ADAMS COUNTY SURVEYOR.

SEAL:



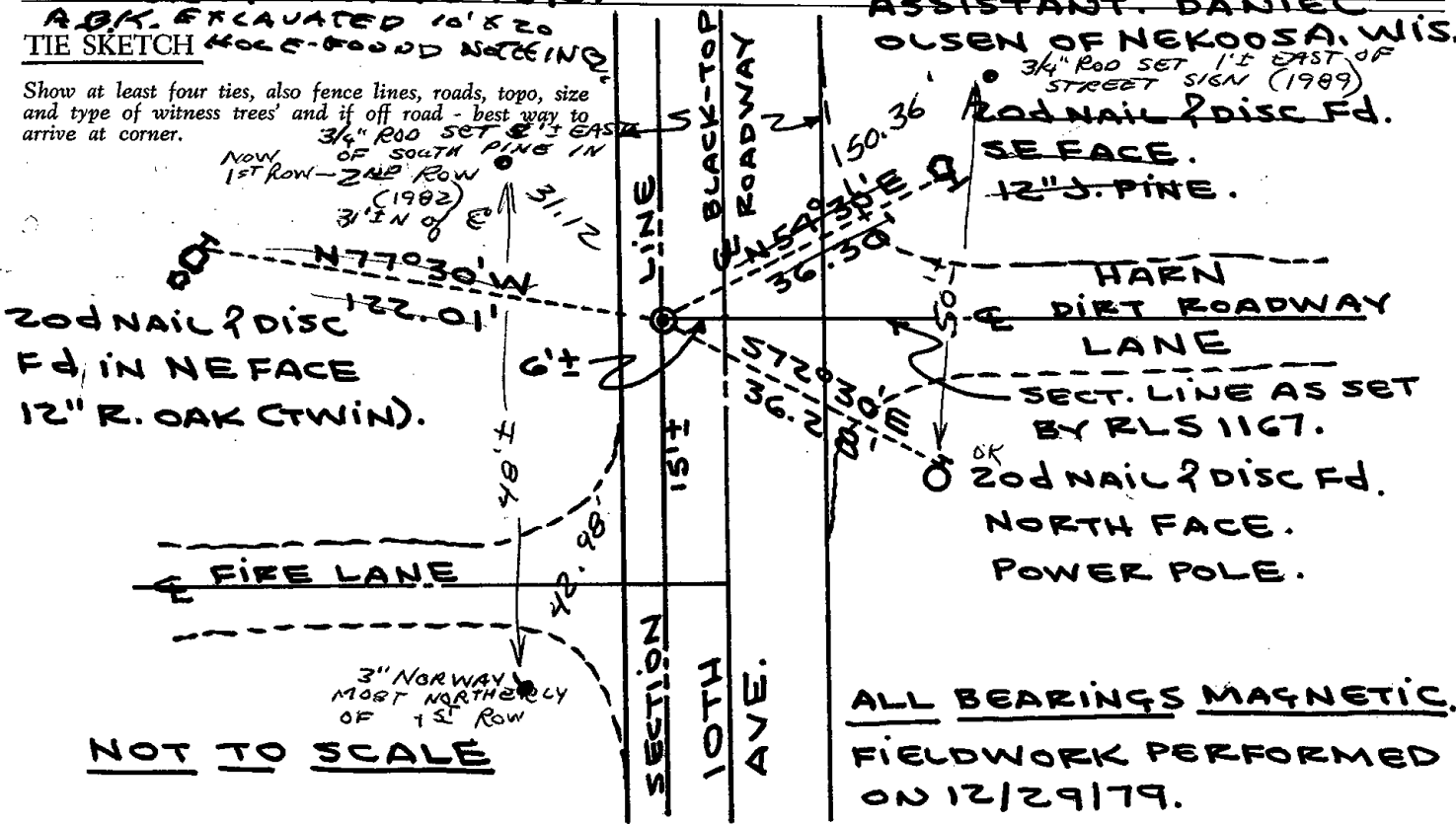
DATA SHOWN HERE ON CERTIFIED CORRECT:

William C. Rohde
Registered Land Surveyor

DATE: 1/10/80

TIE SKETCH

Show at least four ties, also fence lines, roads, topo, size and type of witness trees and if off road - best way to arrive at corner.



ASSISTANT: DANIEL OLSEN OF NEKOOSA, WIS.

3/4" ROD SET 1' EAST OF STREET SIGN (1989)
20d NAIL & DISC FD. SE FACE.
12" J. PINE.

HARN & DIRT ROADWAY LANE
SECT. LINE AS SET BY RLS 1167.
20d NAIL & DISC FD. NORTH FACE.
POWER POLE.

ALL BEARINGS MAGNETIC.
FIELDWORK PERFORMED ON 12/29/79.

NOT TO SCALE

