

PUBLIC LAND SURVEY MONUMENT RECORD

TYPE OF MONUMENT: HARRISON (BROKEN-TOP)
 ADAMS COUNTY COORDINATES, NAD 83 (2007)

N. 314193.973

E. 551753.318

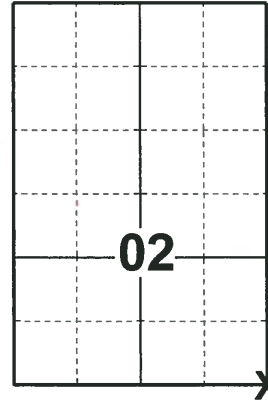
ELEVATION- _____ DATUM _____

FIELD WORK DATE: 04/30/2018

BASIS FOR MONUMENT LOCATION

1974 - PLS 878 FOUND EXISTING PIN MARKING THE CORNER USED IN THE SURVEY OF SUBDIVISIONS TO THE SOUTH. REPLACED THE PIN WITH A HARRISON AND TIED OUT.

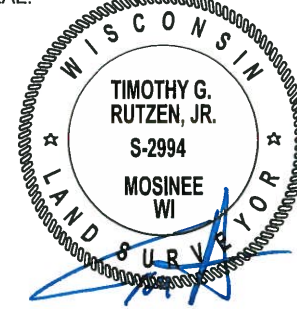
2018 - PLS 2994 FOUND A HARRISON MONUMENT WITH A BROKEN-TOP 12" BELOW THE ROAD SURFACE AND 1 WITNESS. THE MONUMENT AGREES WITH THE EXISTING WITNESS. ACCEPTED THE HARRISON MONUMENT WITH A BROKEN-TOP AS THE CORNER LOCATION. SET 4 NEW TIES AND MEASURED TO THE TIES AND WITNESS.



LOCATION

(INDICATE CORNER BY "X")

SEAL:



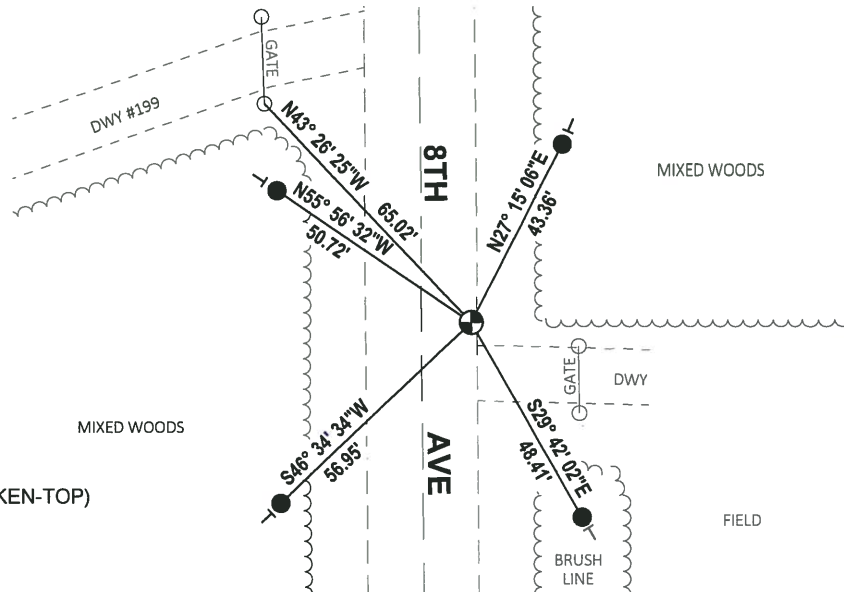
DATA SHOWN HERE ON THIS TIE SHEET IS CORRECT AND COMPLETE TO THE BEST OF MY KNOWLEDGE AND BELIEF.

PROFESSIONAL LAND SURVEYOR

DATE 7-18-18

- TIE SKETCH

NOTE: THE CORNER FALLS 11'± EAST OF THE CENTERLINE OF 8TH AVE AND 5'± NORTH OF THE EXISTING DRIVEWAY.



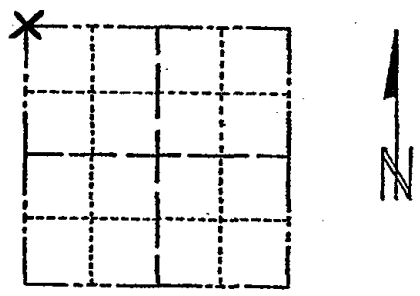
- SET 3/4" x 18" IRON REBAR, 1.50#/FT
- ⊙ FOUND HARRISON MONUMENT (BROKEN-TOP)
- ⊣ VINYL "T" POST

ADAMS COUNTY

CORNER NO. 389 (31)
SECTION 12
TOWN 20
RANGE 6

Survey Monument Record

TYPE OF MONUMENT: Harrison standard
STATE PLANE COORDINATES: N _____
E _____
ELEVATION — M.S.L. DATUM: _____
THETA ANGLE: _____
FIELD BOOK: _____ PAGE _____



LOCATION
(Indicated by 'X')

BASIS FOR MONUMENT LOCATION

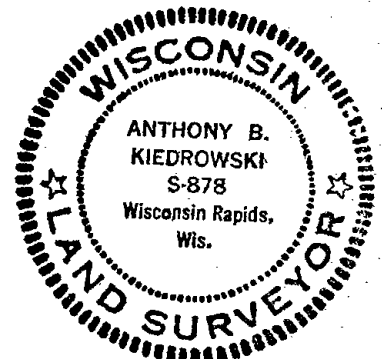
(Use reverse side if necessary)

Show info such as: History of corner, with reference to Vol. and pg. dates, surveyor; exact description of monument replaced; if location computed, by taped or EDM traverse; landowner remarks, etc.

Replaced pin marking corner used in survey of subdivisions to the south of here.

Ok 4-19-84 DJK
" 2-23-89 SS
2 NEW 3-31-94 JG-SS

COR. O.K. NEW TIES 4-13-79 JK-SS
1-GONE, 4-LEFT, 2-16-99 JG-SS
2-24-04 - OK, JG
1-07-10 SS OK



CERTIFIED CORRECT:
Anthony B. Kiedrowski
Registered Land Surveyor
DATE: 6/3/74

TIE SKETCH

(Show at least four ties)

