

01 SECTION 20 TOWN 06 RANGE

ADAMS COUNTY

COUNTY CORNER NO: 33
ROMPORTOL ID: 42006010000

PUBLIC LAND SURVEY MONUMENT RECORD

TYPE OF MONUMENT: CALCULATED POSITION
ADAMS COUNTY COORDINATES, NAD 83 (2007)

N. 314134.981

E. 557055.034

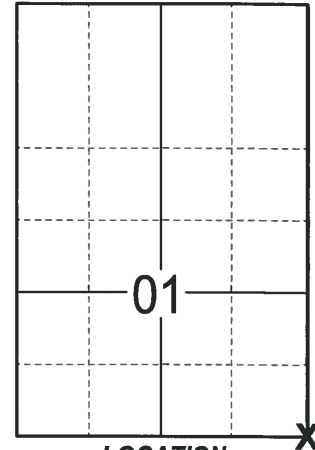
ELEVATION- DATUM

FIELD WORK DATE: 02/06/2018

BASIS FOR MONUMENT LOCATION

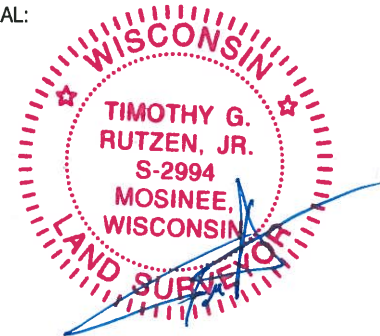
1981 - PLS 878 NO RECORD OF ANY RESURVEYS. ANY MONUMENTATION WAS OBVIOUSLY DESTROYED DUE TO DITCHING. RAN EDM T-2 TRAVERSE OF SECTIONS 1 AND 12. ANALYZED FENCE AND POSSESSION LINES, COMPARED WITH ORIGINAL NOTES AND ARRIVED AT A LOCATION FOR THIS CORNER. A STRAIGHT-LINE PRORATION FOR THIS CORNER WOULD NOT HAVE FIT ANY POSSESSION LINES AT ALL. SET A HARRISON MONUMENT AT CALCULATED POSITION USING EVIDENCE AND TIED OUT.

2018 - PLS 2994 FOUND THE 3 EXISTING TIES FROM THE PRIOR TIESHEET. AFTER SEVERAL DIFFERENT METHODS OF CALCULATION WERE ATTEMPTED. THE CORNER WAS ESTABLISHED BY HOLDING A STRAIGHT LINE BETWEEN THE NW AND SE TIES AND USING THE RECORD DISTANCE FROM THE SE TIE (99.19'). IN DOING THIS THE TIE DISTANCE TO THE NW TIE IS 1'± LONG. BUT OTHER METHODS DID NOT AGREE WITH ADJACENT SECTION CORNERS. ACCEPTED THE CALCULATED CORNER POSITION AS THE BEST METHOD TO LOCATE THE CORNER. SET 1 NEW TIE AND MEASURED TO THE TIES.



LOCATION
(INDICATE CORNER BY "X")

SEAL:



DATA SHOWN HERE ON THIS TIE SHEET IS CORRECT AND COMPLETE TO THE BEST OF MY KNOWLEDGE AND BELIEF.

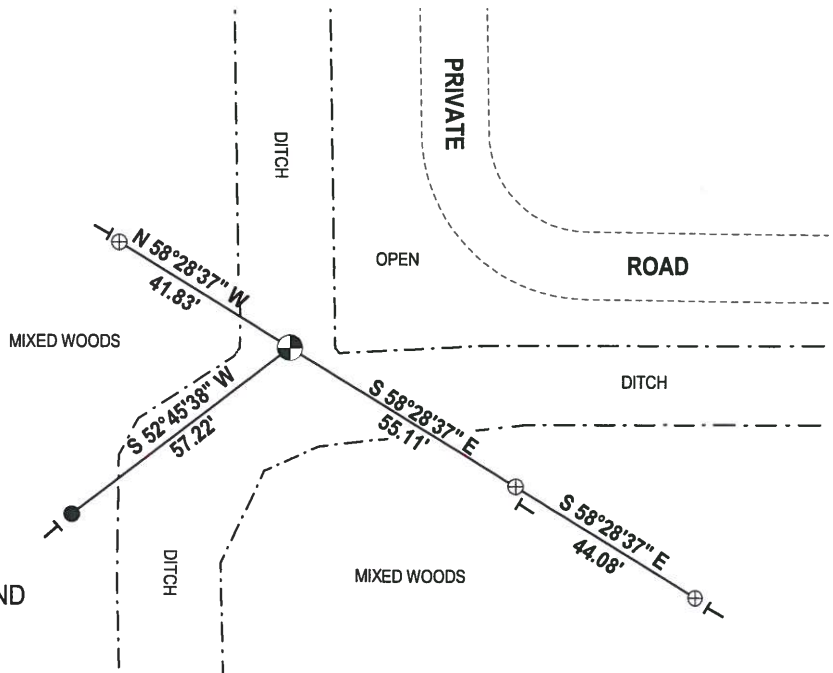
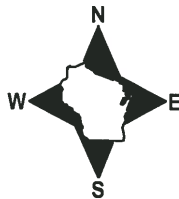
PROFESSIONAL LAND SURVEYOR

DATE 3-1-18

- TIE SKETCH -

NOTE 1: THE CORNER FALLS IN THE MIDDLE OF THE DRAINAGE DITCH. NO MONUMENT WAS SET.

NOTE 2: FOR ACCESS, COME FROM THE NORTH OFF STH 73 THROUGH CRANBERRY FARM.

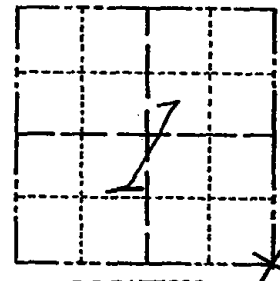


- ⊕ 1-1/4" O.D. IRON PIPE W/ALUMINUM CAP FOUND
- 3/4" x 18" IRON REBAR SET, 1.50#/FT
- ⊕ CALCULATED POSITION
- VINYL "T" POST

Government Land Corner Certificate

ADAMS County
 TYPE OF MONUMENT: 3 1"x24" IP & WITNESS CAPS
 STATE PLANE COORDINATES: N _____
 E _____
 ELEVATION — M.S.L. DATUM: _____
 THETA ANGLE: _____
 FIELD BOOK: 86 PAGE 99
 DRAWN BY: NJ

CORNER NO. 33
 SECTION 1
 TOWN 20
 RANGE 6



LOCATION
(Indicated by 'X')

BASIS FOR MONUMENT LOCATION

Show info such as: History of corner, with reference to Vol. and pg., dates, surveyor; exact description of monument replaced; if location computed, by taped or EDM traverse; landowner remarks, etc. (Use reverse side if necessary)

No record of any resurveys. Any monument obviously gone due to ditching. Ran EDM T-2 traverse of sections 1 and 12, analyzed fence and possession lines, compared with original notes and arrived at a location for this corner. A straight line proration for this corner would not have fit any possession lines at all.

SEAL:



DATA SHOWN HERE ON
CERTIFIED CORRECT:

Anthony B. Kiedrowski
Registered Land Surveyor

DATE: 1/5/81

Ok 7-16-84 MK-DK

TIE SKETCH

Show at least four ties, also fence lines, roads, topo, size and type of witness trees and if off road - best way to arrive at corner.

3 1"x24" IP SET ON LINE
 WITH WITNESS CAPS WITH A
 BEARING OF N 58°31'04" W
 IN RELATION OF EAST SECTION
 LINE BEARING OF S 1°06'40" E

(ACCESS FROM THE NORTH OFF HWY 73
 THROUGH CRANBERRY FARM
 FLOW)

NAIL & DISCS IN TREES

