

## PUBLIC LAND SURVEY MONUMENT RECORD

TYPE OF MONUMENT: RAILROAD SPIKE  
 ADAMS COUNTY COORDINATES, NAD 83 (2007)

N. 311354.307

E. 530597.308

ELEVATION- - - - - DATUM - - - - -

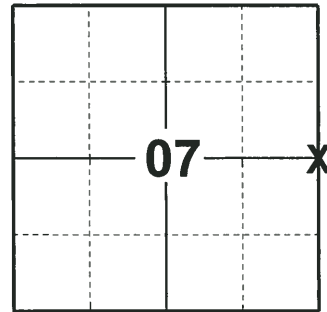
FIELD WORK DATE: 05/03/2018

### BASIS FOR MONUMENT LOCATION

1974 - PLS 841 FOUND NO ORIGINAL OR RECORD CORNER EVIDENCE. CALCULATED THE CORNER LOCATION BY PROPORTIONAL MEASUREMENT. EXCAVATED THE AREA WITH A BACKHOE. SET A STANDARD 30" C.I. HARRISON MONUMENT AT THE CORNER 6"± BELOW GRADE AND TIED OUT.

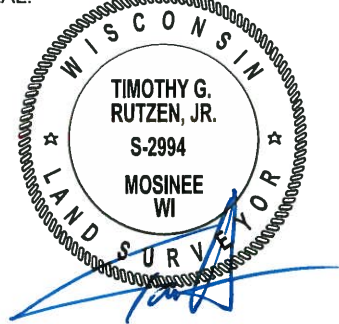
1995 - PLS (UNKNOWN) REMOVED MONUMENT FOR ROAD CONSTRUCTION AND REPLACED IT WITH A RAILROAD SPIKE AND RE-TIED THE CORNER.

2018 - PLS 2994 FOUND A RAILROAD SPIKE FLUSH WITH THE ROAD SURFACE AND 1 WITNESS TREE. REMOVED THE RAILROAD SPIKE AND EXCAVATED BELOW AND FOUND NO EVIDENCE OF ANY OTHER MONUMENTATION. THE RR SPIKE AGREES WITH THE EXISTING WITNESS TREE. ACCEPTED THE RAILROAD SPIKE AS THE CORNER LOCATION. SET 4 NEW TIES AND MEASURED TO THE TIES AND WITNESS TREE.



LOCATION  
 (INDICATE CORNER BY "X")

SEAL:



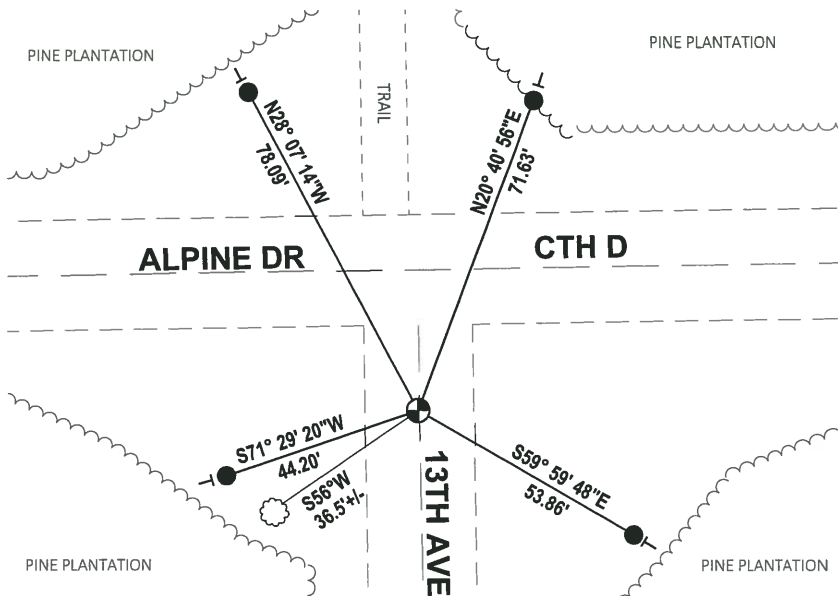
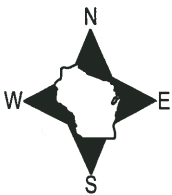
DATA SHOWN HERE ON THIS TIE SHEET IS CORRECT AND COMPLETE TO THE BEST OF MY KNOWLEDGE AND BELIEF.

PROFESSIONAL LAND SURVEYOR

DATE 7-18-18

### TIE SKETCH

NOTE: THE CORNER FALLS 0.5' WEST OF THE CENTERLINE OF 13TH AVE AND 30'± SOUTH OF THE CENTERLINE OF ALPINE DR (CTH D).



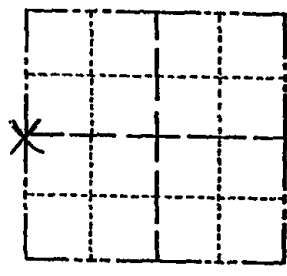
- SET 3/4" x 18" IRON REBAR, 1.50#/FT
- ⊕ FOUND RAILROAD SPIKE
- ┆ VINYL "T" POST
- ☼ WITNESS TREE

# Government Land Corner Certificate

35

County \_\_\_\_\_  
 TYPE OF MONUMENT: RAILROAD SPIKE  
 STATE PLANE COORDINATES: N \_\_\_\_\_  
 E \_\_\_\_\_  
 ELEVATION — M.S.L. DATUM: \_\_\_\_\_  
 THETA ANGLE: \_\_\_\_\_  
 FIELD BOOK: \_\_\_\_\_ PAGE \_\_\_\_\_  
 DRAWN BY: \_\_\_\_\_

CORNER NO. 618  
 SECTION 8  
 TOWN 20N  
 RANGE 6E



LOCATION  
(Indicated by 'X')

## BASIS FOR MONUMENT LOCATION

Show info such as: History of corner, with reference to Vol. and pg., dates, surveyor; exact description of monument replaced; if location computed, by taped or EDM traverse; landowner remarks, etc. (Use reverse side if necessary).

MONUMENT REMOVED FOR ROAD CONSTRUCTION  
 RAILROAD SPIKE SET - NEW DISTANCES  
 8-14-95 SS-JG

SEAL:

DATA SHOWN HERE ON  
 CERTIFIED CORRECT:

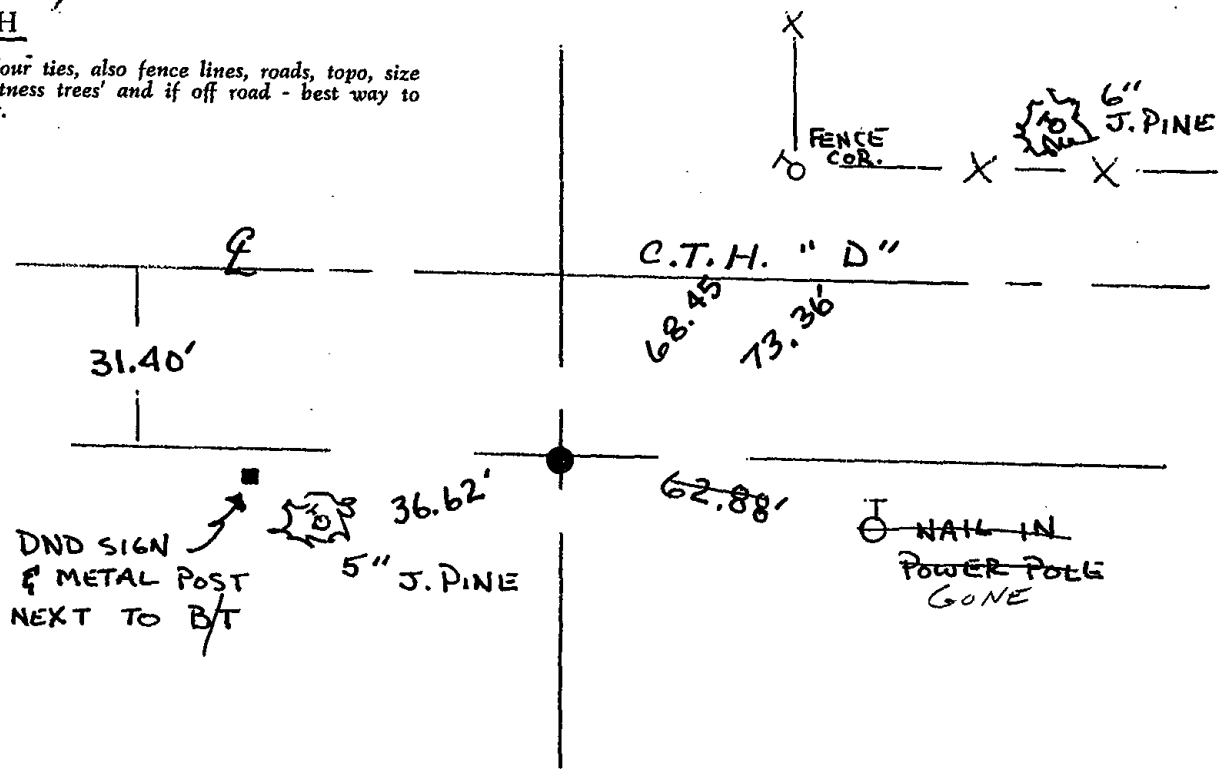
Registered Land Surveyor

DATE: \_\_\_\_\_

1-GONE, 3-LEFT 1-11-99 JG-JF  
 SEE BACK OF PAGE 2

## TIE SKETCH

Show at least four ties, also fence lines, roads, topo, size and type of witness trees and if off road - best way to arrive at corner.



ADAMS COUNTY

Survey Monument Record

TYPE OF MONUMENT: HARRISON STANDARD

STATE PLANE COORDINATES: N \_\_\_\_\_

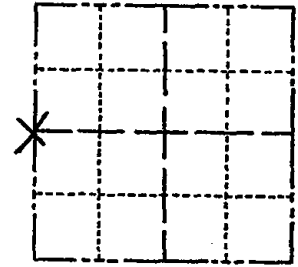
E \_\_\_\_\_

ELEVATION -- M.S.L. DATUM: \_\_\_\_\_

THETA ANGLE: \_\_\_\_\_

FIELD BOOK: \_\_\_\_\_ PAGE \_\_\_\_\_

CORNER NO. 6/8 (35)  
SECTION 8  
TOWN 20 N.  
RANGE 6 E.



LOCATION  
(Indicated by 'X')

SEAL:



BASIS FOR MONUMENT LOCATION

(Use reverse side if necessary)

Show info such as: History of corner, with reference to Vol. and pg, dates, surveyor; exact description of monument replaced; if location computed, by taped or EDM traverse; landowner remarks, etc.

NO ORIGINAL OR RECORDED CORNER EVIDENCE FOUND. CORNER SET BY PROPORTIONAL MEASUREMENT, BASED ON EDM TRAVERSE OF SECTION. STD 30" C.I. HARRISON MONUMENT SET @ CORNER WITH TO 6" ± BELOW GRADE. EXCAVATED ROAD AREA WITH BACKHOE. - Found Nothing. (ABK)

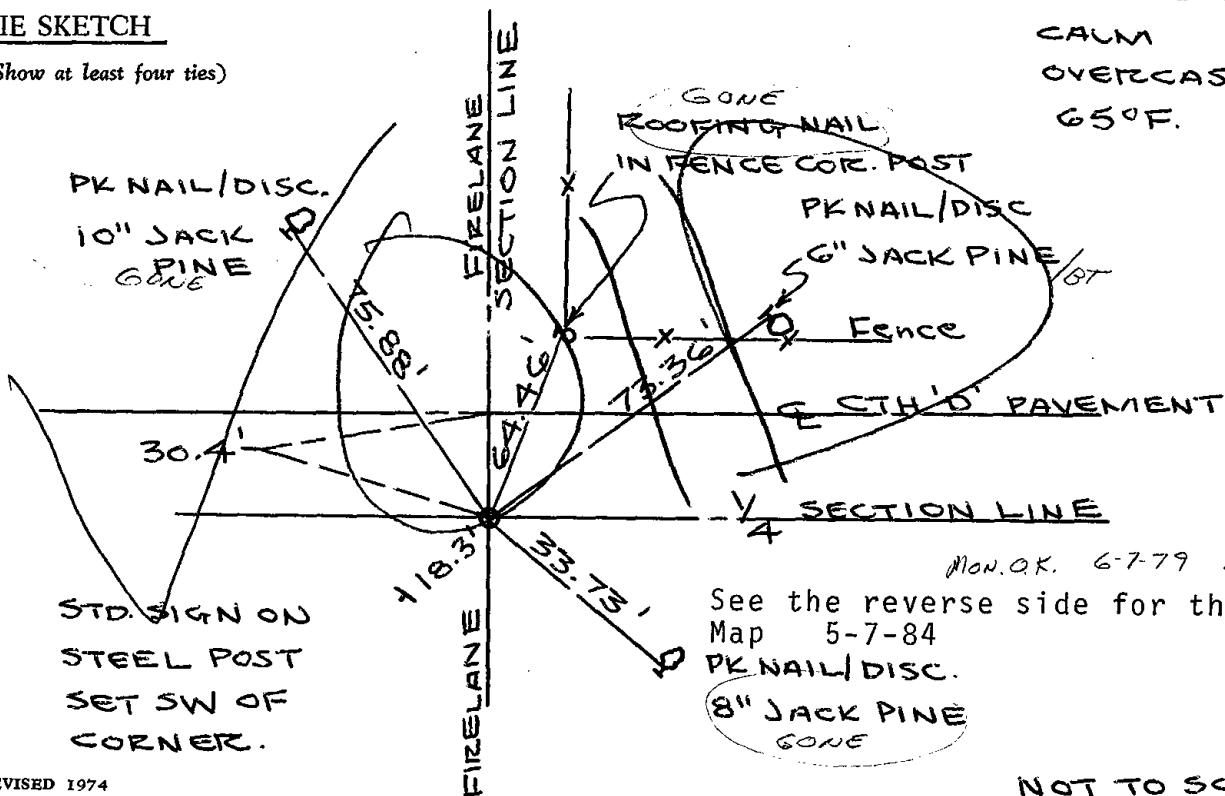
See REVERSE SIDE!

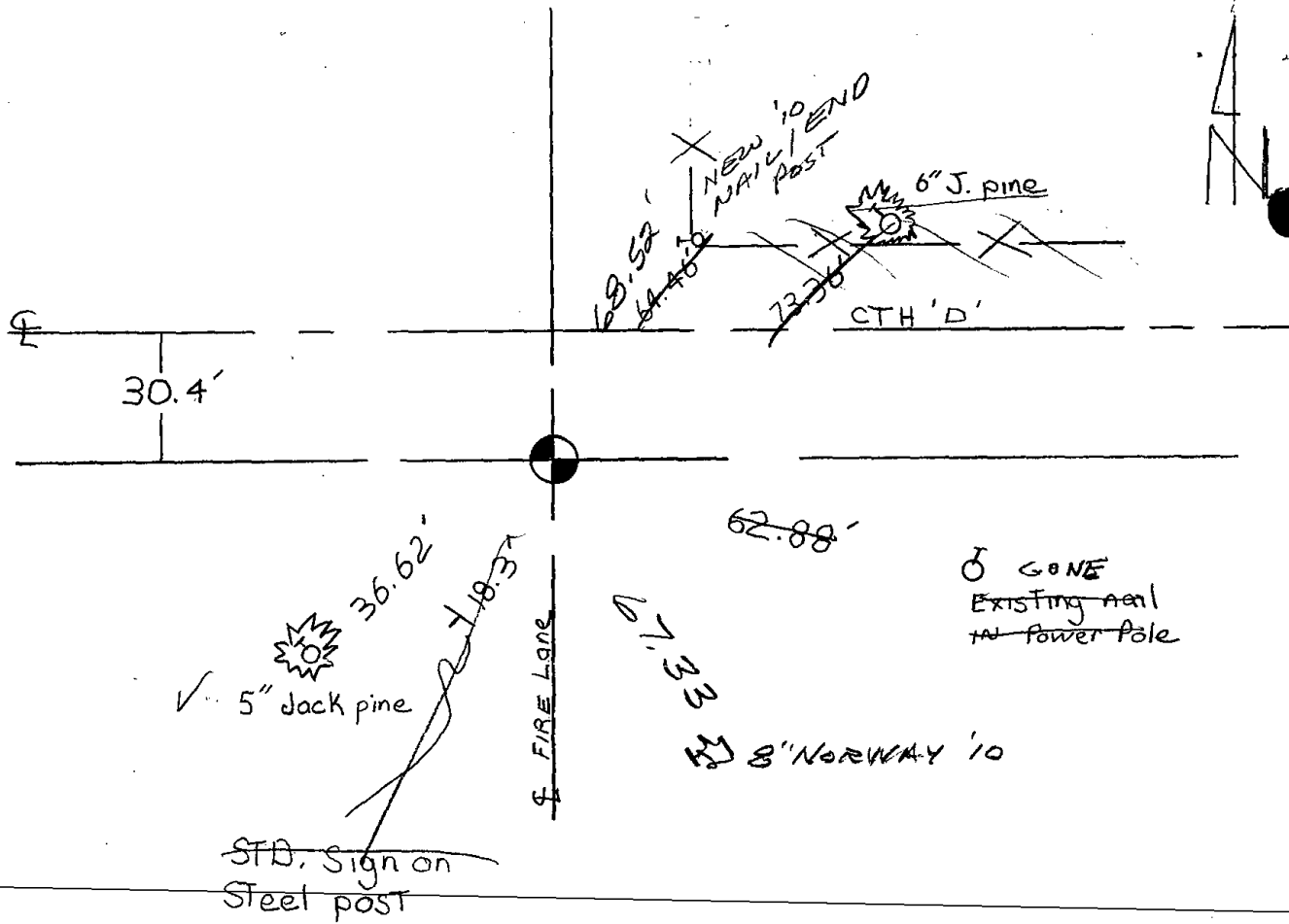
CERTIFIED CORRECT:  
*William C. Rohde*  
Registered Land Surveyor  
DATE: 10/30/74

TIE SKETCH

(Show at least four ties)

CALM  
OVERCAST  
65°F.





Map updated on 5-7-84 SS-DK

OK 3-7-94 - JG-62

1-GONE, 2-25-04 - JG

NOTE: USE TIES - MON. MAY BE

FO RR SPIKE 1-11-10

REMOVED FOR ROAD CONSTRUCTION.

2 NEW TIES SS

6-12-85