

PUBLIC LAND SURVEY MONUMENT RECORD

TYPE OF MONUMENT: HARRISON (BROKEN-TOP)
 ADAMS COUNTY COORDINATES, NAD 83 (2007)

N. 311533.369

E. 546441.506

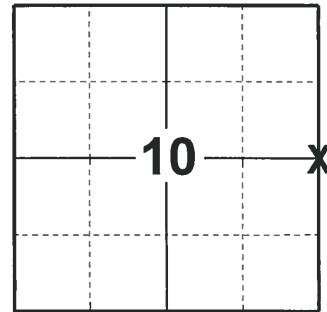
ELEVATION- DATUM

FIELD WORK DATE: 05/03/2018

BASIS FOR MONUMENT LOCATION

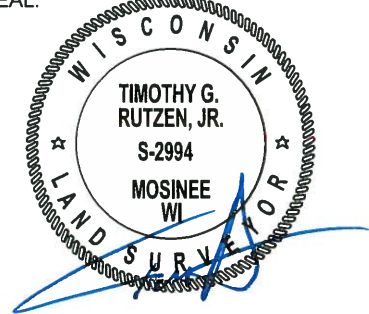
1980 - PLS 841 CORNER WAS ESTABLISHED MIDWAY ON A STRAIGHT LINE BETWEEN OPPOSITE SECTION CORNERS, BY E.D.M. TRAVERSE, PER INSTRUCTIONS BY ADAMS COUNTY SURVEYOR, ANTHONY B. KIEDROWSKI, RLS 878. SET HARRISON AND TIED OUT.

2018 - PLS 2994 FOUND A HARRISON MONUMENT WITH A BROKEN-TOP 24" BELOW THE ROAD SURFACE, 1 PROPERTY IRON AND 2 WITNESS TREES. THE MONUMENT AGREES WITH THE EXISTING WITNESS TREES. ACCEPTED THE HARRISON MONUMENT WITH A BROKEN-TOP AS THE CORNER LOCATION. SET 3 NEW TIES AND MEASURED TO THE TIES AND WITNESS TREES.



LOCATION
 (INDICATE CORNER BY "X")

SEAL:



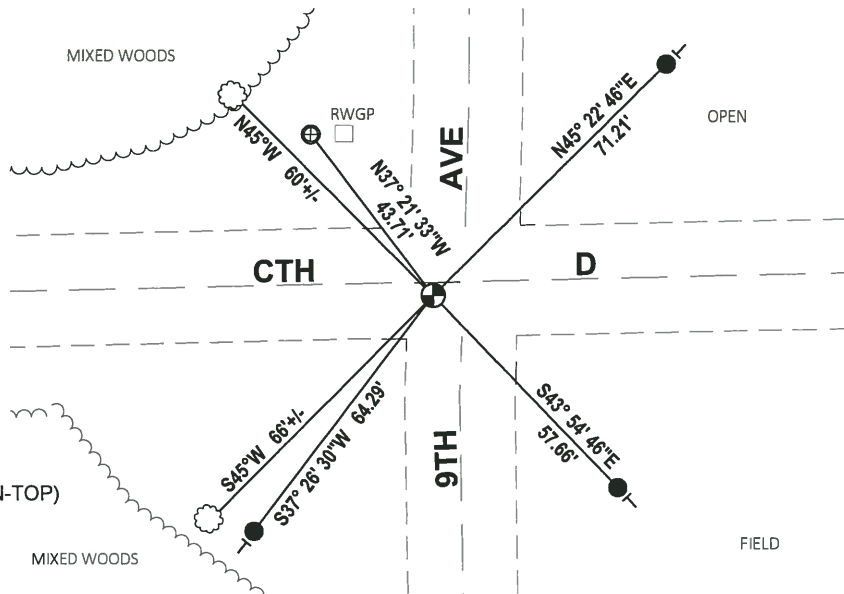
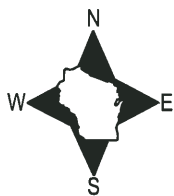
DATA SHOWN HERE ON THIS TIE SHEET IS CORRECT AND COMPLETE TO THE BEST OF MY KNOWLEDGE AND BELIEF.

PROFESSIONAL LAND SURVEYOR

DATE 7-18-18

TIE SKETCH

NOTE: THE CORNER FALLS 4± SOUTH OF THE CENTERLINE OF CTH D AND 6± WEST OF THE CENTERLINE OF 9TH AVE.



- SET 3/4" x 18" IRON REBAR, 1.50#/FT
- ⊕ FOUND 1" IRON ROD
- ⊙ FOUND HARRISON MONUMENT (BROKEN-TOP)
- VINYL "T" POST
- ☁ WITNESS TREE

Government Land Corner Certificate

ADAMS County

TYPE OF MONUMENT: PK NAIL & DISC SET. HARRISON

STATE PLANE COORDINATES: N
E

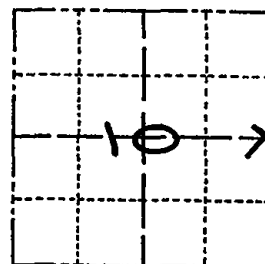
ELEVATION — M.S.L. DATUM:

THETA ANGLE:

FIELD BOOK: PAGE

DRAWN BY: W. RONDE

CORNER NO. 38
SECTION 10
TOWN 20 N.
RANGE 6 E.



LOCATION
(Indicated by 'X')

BASIS FOR MONUMENT LOCATION

Show info such as: History of corner, with reference to Vol. and pg., dates, surveyor; exact description of monument replaced; if location computed, by taped or EDM traverse; landowner remarks, etc. (Use reverse side if necessary)

CORNER ESTABLISHED MIDWAY
ON A RIGHT-LINE BETWEEN
OPPOSITE SECTION CORNERS,
BY E.D.M. TRAVERSE, PER
INSTRUCTIONS BY ADAMS
COUNTY SURVEYOR, ANTHONY
B. KIEDROWSKI, RLS 878. I
WAS ASSISTED BY DANIEL
OLSEN, OF NEKOOSA, WIS.
FIELDWORK PERFORMED ON
12/29/79. NO EXCAVATION DONE

OK 4-19-84 DJK
OK 3-8-89 GRS

SEAL:



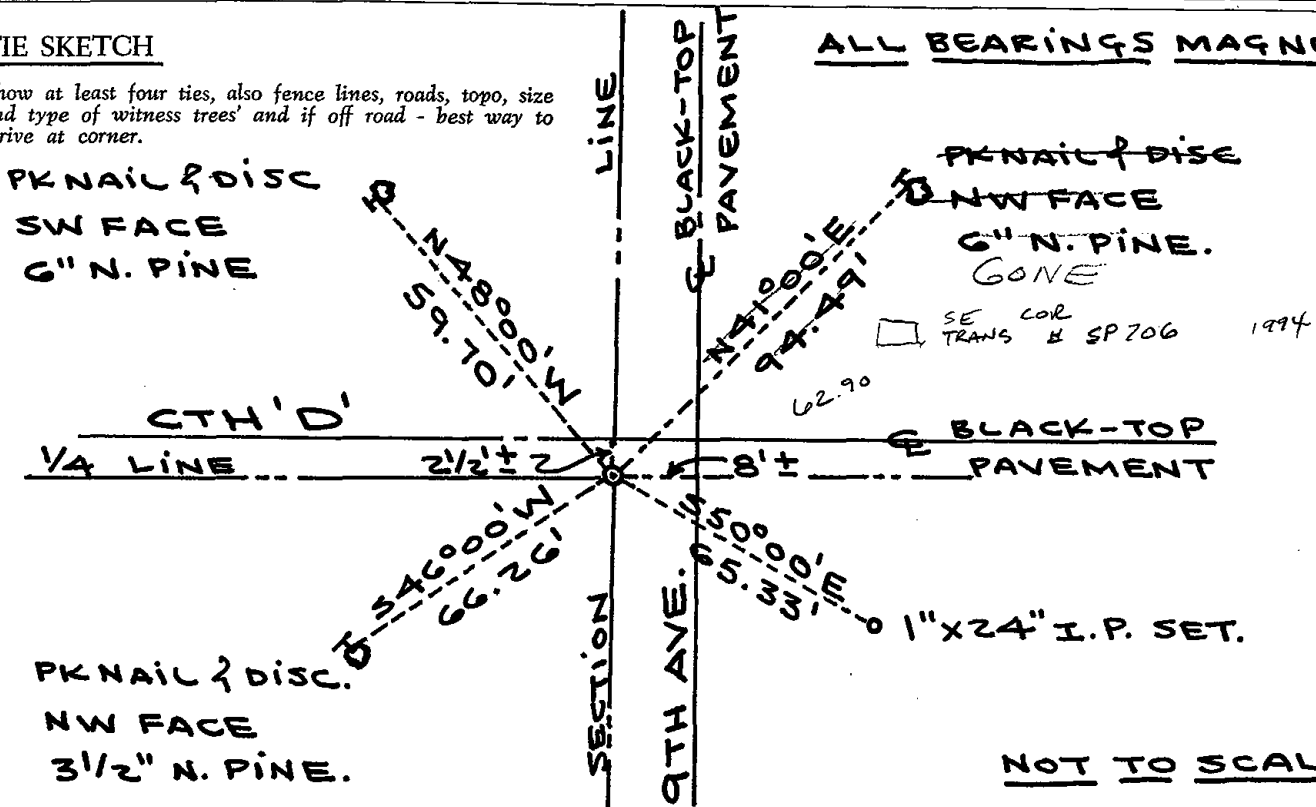
DATA SHOWN HERE ON
CERTIFIED CORRECT:

William C. Rohde
Registered Land Surveyor

DATE: 1/10/80

TIE SKETCH

Show at least four ties, also fence lines, roads, topo, size and type of witness trees and if off road - best way to arrive at corner.



ALL BEARINGS MAGNETIC.

NOT TO SCALE

